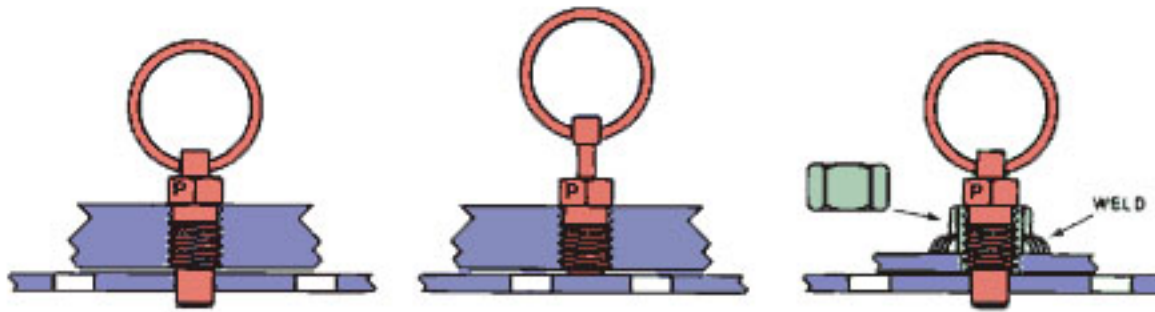


# Pull Pin

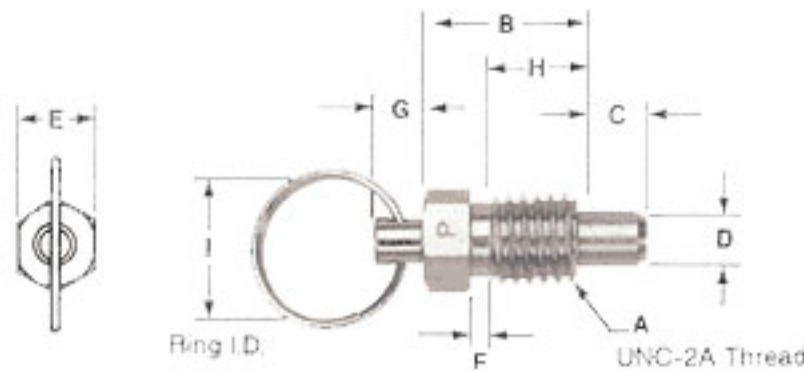
Body is threaded into application, with ring on outside surface. Pull ring to retract spring loaded tip and allow adjustment of equipment. Release ring to lock pin into desired hole position. Chamfered tip allows for easy adjustment. Ideal for adjustable tubing, tooling, latches, and gates. Stock sizes are 12L14 steel, zinc plated. Special sizes and materials available.



Install Pull Pin into pre-tapped hole in material.

Pull ring to retract plunger and allow for adjustments. Release ring and plunger locks into desired hole position.

For lighter gauge materials, a nut may be welded to outside of material. The Pull Pin then threads into nut.



## Pull Pin Zinc Plated

Stock Code	Nominal Thread Dia.	Pull Force, Lbs.		A	B	C	D	E	E	G	H	I
		Initial	Final									
PULL-250	1/4	0.50	2.00	1/4-20	0.44	0.19	0.16	0.25	0.00	0.13	0.31	0.875
PULL-375	3/8	0.75	3.00	3/8-16	0.63	0.28	0.25	0.38	0.13	0.19	0.44	0.875
PULL-500	1/2	1.00	4.00	1/2-13	0.81	0.38	0.31	0.50	0.13	0.25	0.56	1.00
PULL-625	5/8	1.25	5.00	5/8-11	1.00	0.44	0.38	0.62	0.13	0.31	0.69	1.00
Unless otherwise noted, all dimensions are for reference only.												