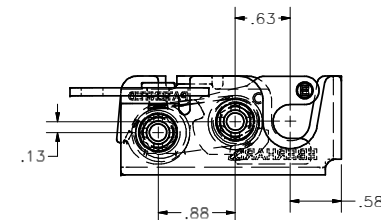
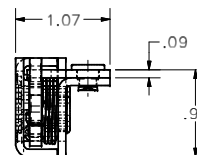
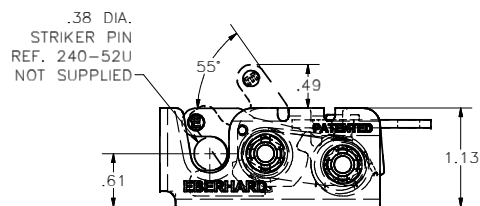
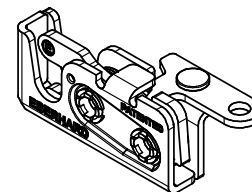
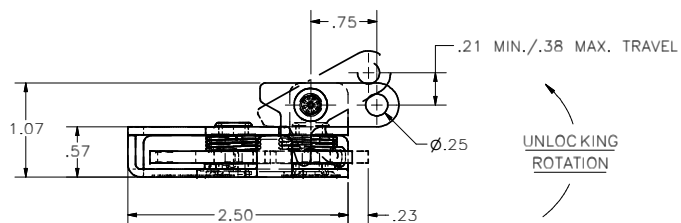


CONFIDENTIAL NOTICE: This drawing and the designs, specifications and engineering information disclosed herein are the property of Eberhard Manufacturing Company and are not to be disseminated or reproduced without express written consent. The drawing is loaned in confidence and then only for consideration of the matter disclosed herein. In accepting loan of this drawing, recipient agrees to keep it and the matter disclosed herein in confidence and not to use nor permit their use in any way detrimental to Eberhard Manufacturing Company, Division of the Eastern Company, 21044 Drake Road, Cleveland, Ohio 44149-9712. © 2012 EBERHARD MFG. CO.

REVISION HISTORY			
REV.	DESCRIPTION	EN	DATE
1	REVISED, REDRAWN AND CONVERTED TO 3D	5673	9-28-12



1-241-L
LEFT HAND
MINI-ROTARY™ LOCK



- NOTES:
- USE 1/4-20 GRADE 8 BOLTS FOR INSTALLATION.
RECOMMENDED TORQUE FOR TIGHTENING: 14 FT./LBS.
 - MAX LOAD RATING: 750 LBS
 - FINISHES:
 - EVERLUBE INTERNAL COMPONENTS, FC (54)
 - BEARING GREASE WITH EVERLUBE INTERNAL COMPONENTS, FC (BG)

PATENTED
CUSTOMER PRINT
SHEET 1 OF 2
RIGHT HAND SHOWN
LEFT HAND OPPOSITE

WARNING
THIS PRODUCT MUST NOT BE USED FOR
PERSONAL RESTRAINT APPLICATIONS

MINI-ROTARY™ IS A TRADEMARK OF EBERHARD MFG. CO.,
DIVISION OF THE EASTERN COMPANY.

THIS DOCUMENT IS IN ACCORDANCE WITH ASME Y14.15-2009		DATE 9/28/2012	NAME
UNLESS OTHERWISE SPECIFIED TOLERANCES ARE AS FOLLOWS:	DRY	SCALE	SINGLE STAGE MINI-ROTARY LOCK
ANGLES: 1/8" 1/16"	FLP	MATERIAL	
2 PLACE DEC.: ±.03 ±.76	FILE	PART NUMBER	
3 PLACE DEC.: ±.015 ±.38	CHKBY	1-241 RL	
ALL HOLES: ±.005 ±.13			

SUPERSEDES DRAWING 1-241 RL SH1 DATED 5-28-96.

C:\Working_Folder\Archive\Pro2\2411\241 RL SH1.dwg