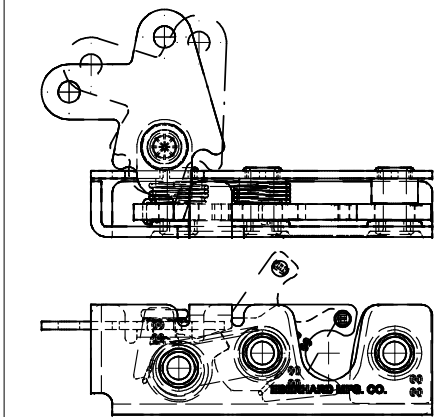
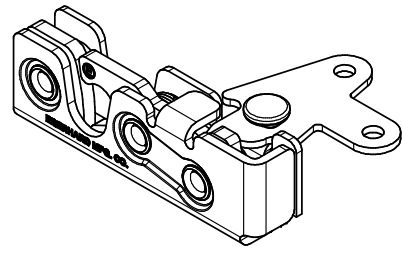
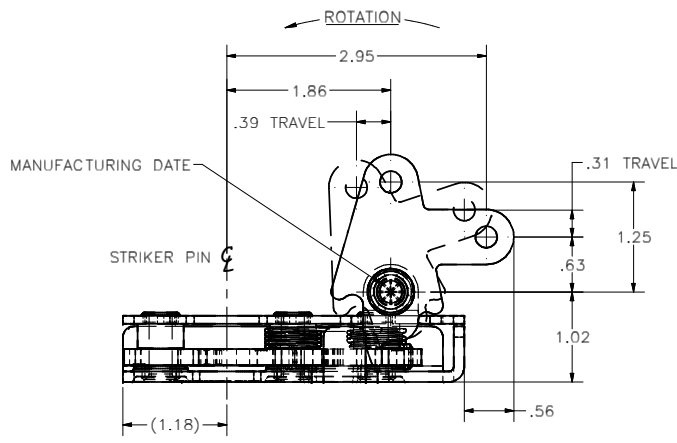


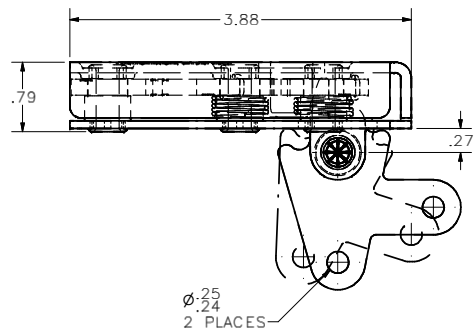
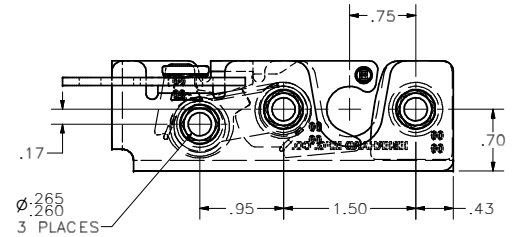
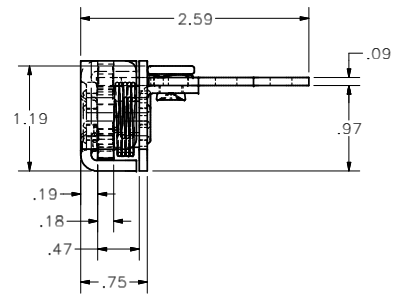
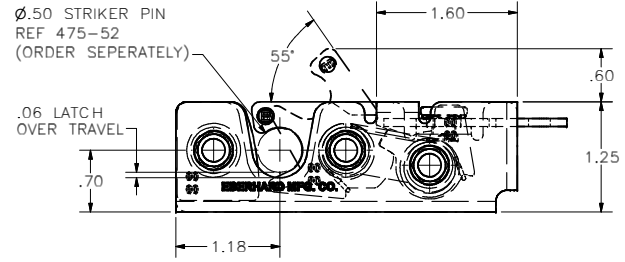
CONFIDENTIAL NOTICE: This drawing and the designs, specifications and engineering information disclosed herein are the property of Eberhard Manufacturing Company and are not to be disseminated or reproduced without express written consent. The drawing is loaned in confidence and then only for consideration of the matter disclosed herein. In accepting loan of this drawing, recipient agrees to keep it and the matter disclosed herein in confidence and not to use nor permit their use in any way detrimental to Eberhard Manufacturing Company, Division of the Eastern Company, 21044 Drake Road, Cleveland, Ohio 44149-9712. © 2013 EBERHARD MFG. CO.

REVISION HISTORY			
REV	DESCRIPTION	EN	DATE
	REVISED, REDRAWN AND CONVERTED TO 3D	5689	2-1-13

D
C
B
A



1-475-L
LEFT HAND
LOW PROFILE ROTARY LOCK ASSEMBLY



- NOTES:
- THIS ROTARY LOCK ASSEMBLY MEETS ALL REQUIREMENTS FOR FMVSS 206 SAFETY STANDARD WHEN MOUNTED WITH THREE 1/4-20 UNC-2A, GRADE 8 BOLTS.
 - RECOMMENDED TORQUE FOR TIGHTENING: 130 ±10 in./lbs.
 - SPRING RATE:
LATCH: 1.07 lbs.*in. - UNLATCHED POSITION.
PAWL: 1.03 lbs.*in. - ACTUATED POSITION.
 - FINISHES:
A. YELLOW ZINC WITH EVERLUBE INTERNAL COMPONENTS, FC (64)
B. BEARING GREASE WITH EVERLUBE INTERNAL COMPONENTS, FC (BG)

CUSTOMER PRINT
SHEET 1 OF 2
RIGHT HAND SHOWN
LEFT HAND OPPOSITE

EBERHARD MANUFACTURING CO. DIVISION OF THE EASTERN COMPANY CLEVELAND, OHIO 44149-9712	
LOW PROFILE ROTARY LOCK ASSEMBLY	
MATERIAL	PART NUMBER
-----	1-475-R/L



SUPERSEDES DRAWING 1-475-R/L SHEET 1 OF 2 DATED 12-23-08.

THIS DOCUMENT IS IN ACCORDANCE WITH ASME Y14.5-2009		DATE	NAME
UNLESS OTHERWISE SPECIFIED TOLERANCES ARE AS FOLLOWS:	DRY	5/29/2012	
ANGLES:	ALL	SCALE	FILE
2 PLACE DEC.: .03	#.76	CHKBY	
3 PLACE DEC.: .015	#.38		
ALL HOLES:	#.005		

4 3 2 1

C:\Working_Folder\Archive\Pro\447511-475 SH1.dwg