

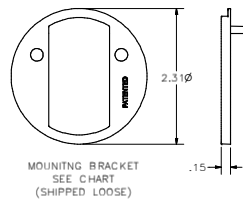
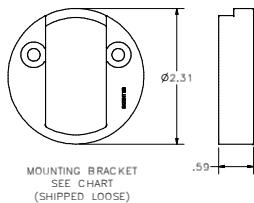
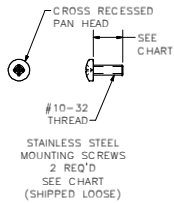
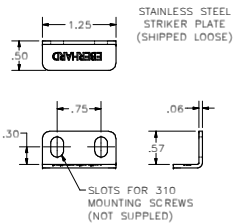
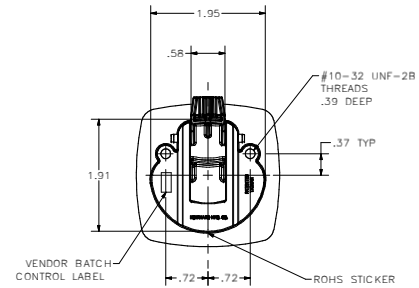
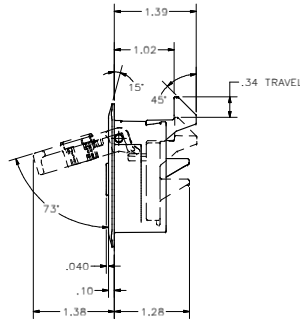
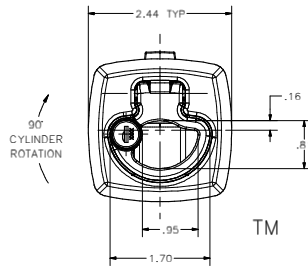
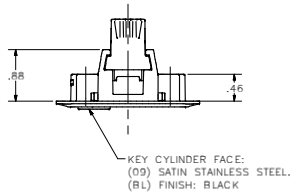
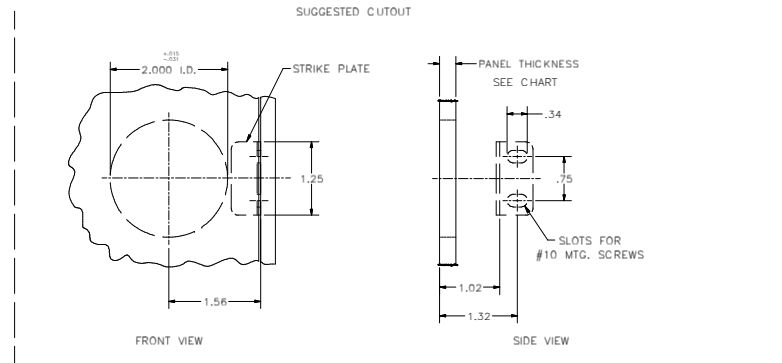
CONFIDENTIAL NOTICE: This drawing and the design, specifications and engineering information disclosed herein are the property of Eberhard Manufacturing Company and are not to be disseminated or reproduced without express written consent. The drawing is issued in confidence and the copyright of the patent disclosed herein. In copying hereof the company, recipient agrees to keep it confidential and not to use for other than the intended purpose. Eberhard Manufacturing Company, 10000 W. 10th Street, Overland Park, KS 66211-2000, USA. TEL: 913.241.2000 FAX: 913.241.2001

REVISION HISTORY			
REV	DESCRIPTION	EN	DATE
1	REVISED, REDRAWN AND CONVERTED TO 3D	5668	6-14-13

PART NUMBER	PANEL THICKNESS		MTG. BRACKET PART NUMBER	MTG. BRACKET HEIGHT	MTG. SCREW PART NUMBER	MTG. SCREW LENGTH
	MIN.	MAX.				
1031-100A	.035	.275	1030-6	.59	1030-SS8	.50
1031-100B	.275	.475	1030-6	.59	1030-SS9	.69
1031-100C	.475	.675	1030-7	.15	1030-SS8	.50
1031-100D	.675	.875	1030-7	.15	1030-SS9	.69

KEY CYLINDER AVAILABLE IN KEY No.'s 100 THRU 110.
ASSEMBLIES TO BE ORDERED WITH THE KEY No. AS PART OF THE PART NUMBER AS SHOWN.
1031-100A

PANEL THICKNESS
KEY No.



- NOTES:
- HANDLE & RECEPTACLE ARE TRADEMARKS OF EBERHARD MANUFACTURING CO., DIVISION OF THE EASTERN CO.
 - THIS PRODUCT IS TO BE ROHS COMPLIANT.
 - AVAILABLE FINISHES:
A. MATTE BLACK, FC (MB) WITH (BL) CYLINDER
B. MATTE WHITE, FC (MW) WITH (09) CYLINDER

THIS DOCUMENT IS IN ACCORDANCE WITH ANSI Z39-18-2009		DRAWING NUMBER		PULL RING SLAM LATCH ASSEMBLY - KEY LOCKING	
UNLESS OTHERWISE SPECIFIED TOLERANCES ARE AS FOLLOWS:	DECIMALS	FRACTIONS	ANGLES	PLACEMENT	DATE
	±.005	±.005	±.005	±.005	±.005
	±.005	±.005	±.005	±.005	±.005
	±.005	±.005	±.005	±.005	±.005
	±.005	±.005	±.005	±.005	±.005

SUPERSEDES DRAWING 1031 CHART SHEET 1 OF 2 DATED 8-28-07

CUSTOMER PRINT
PATENT PENDING
SHEET 1 OF 2

EBERHARD MANUFACTURING CO.
DIVISION OF
THE EASTERN COMPANY
ELEMWARTH, MISSOURI 64418-9213

1031

C:\Working_Folder\Acvwp111020_311021_CHI.SHT.LWK