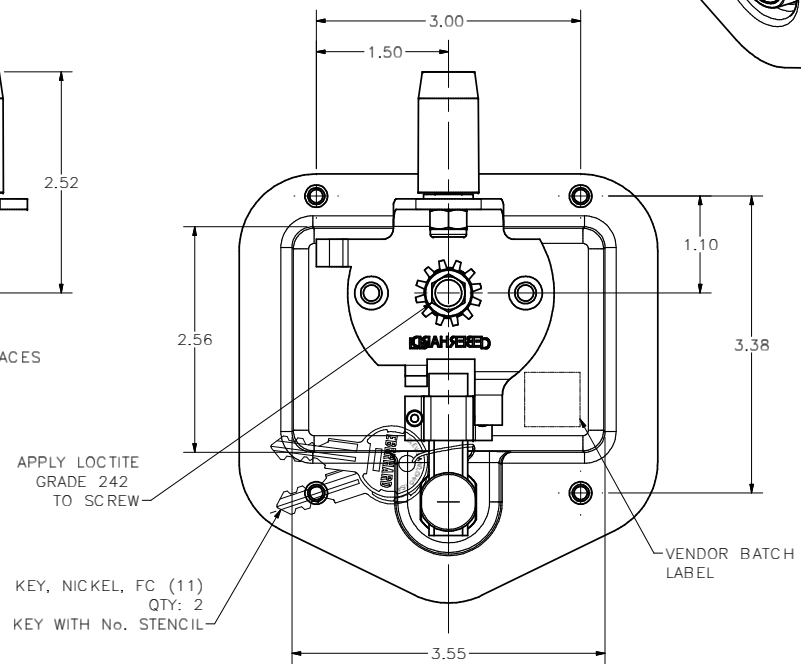
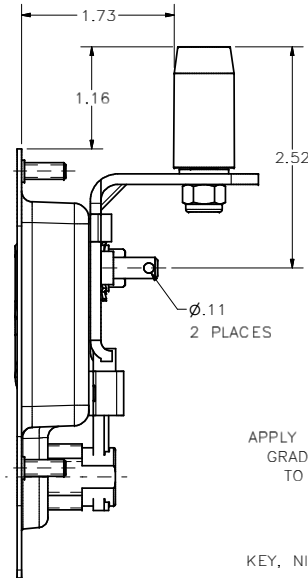
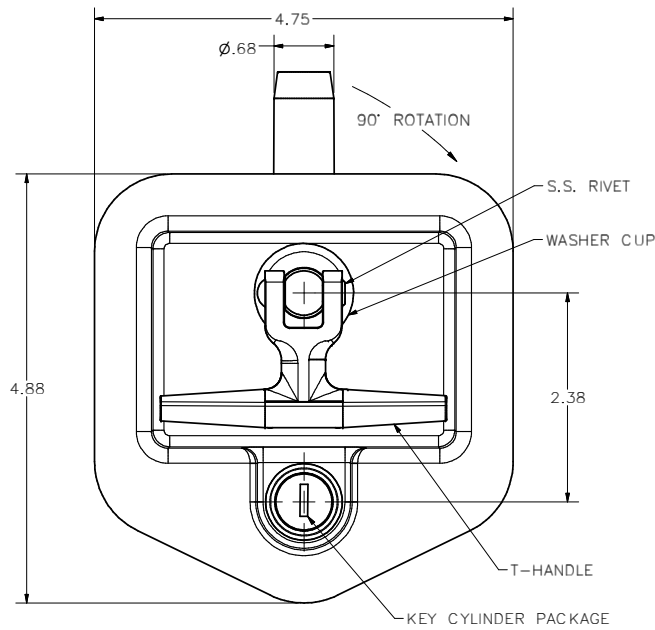
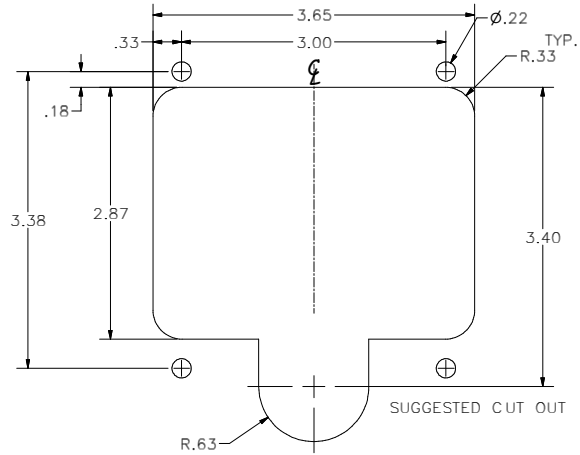
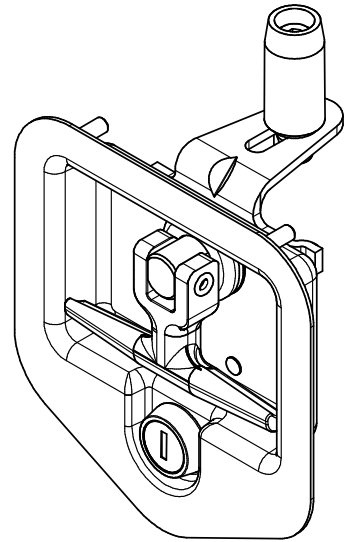


CONFIDENTIAL NOTICE: This drawing and the designs, specifications and engineering information disclosed herein are the property of Eberhard Manufacturing Company and are not to be disseminated or reproduced without express written consent. The drawing is loaned in confidence and then only for consideration of the matter disclosed herein. In accepting loan of this drawing, recipient agrees to keep it and the matter disclosed herein in confidence and not to use nor permit their use in any way detrimental to Eberhard Manufacturing Company, Division of the Eastern Company, 21844 Drake Road, Cleveland, Ohio 44149-9712. © 2013 EBERHARD MFG. CO.

REVISION HISTORY			
REV.	DESCRIPTION	EN.	DATE
	REVISED, REDRAWN AND CONVERTED TO 3D	5591	2/15/13
1	REVISED NOTE	5594	3-8-13



- NOTES:
1. KEY CYLINDER WITH 50 KEY CHANGES. ORDER KEY No. J201 THRU J250
 2. MAXIMUM TORQUE FOR TIGHTENING THREADED STUD IS 23 IN./LBS.
 3. FINISH: BRIGHT STAINLESS STEEL, FC (10) WITH CHROME HANDLE

EXAMPLE: ORDER KEY NUMBER:
36-48750-SSL-JXXX-10
KEY NUMBER

① RIGHT HAND SHOWN
LEFT HAND OPPOSITE
CUSTOMER PRINT
SHEET 1 OF 2

EBERHARD MANUFACTURING CO. DIVISION OF THE EASTERN COMPANY CLEVELAND, OHIO 44149-9712	
3-POINT T-HANDLE ASSEMBLY	
MATERIAL	PART NUMBER
-----	36-48750-SSR/L

THIS DOCUMENT IS IN ACCORDANCE WITH		DATE
ASME Y14.5-2009		2/15/2013
UNLESS OTHERWISE SPECIFIED	TOLERANCES ARE AS FOLLOWS:	DRYBY
LINE SIZE	MEASURE	FINISH
2	PLACE DEC.	0.03
3	PLACE DEC.	0.015
ALL	HOLE	0.005

SUPERSEDES DRAWING 36-48750-SSRL SHEET 1 OF 2 DATED 11-12-08.