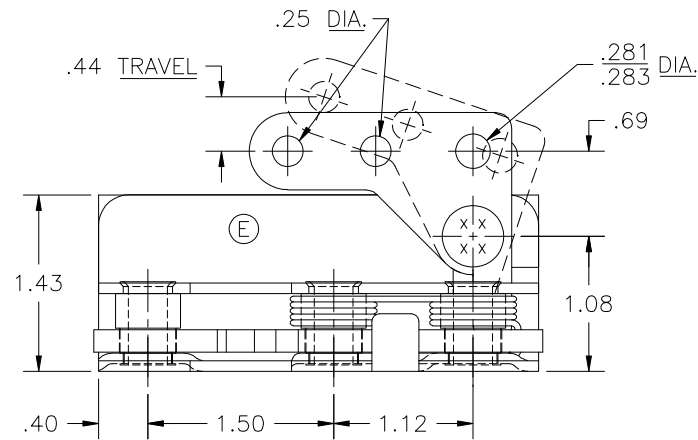
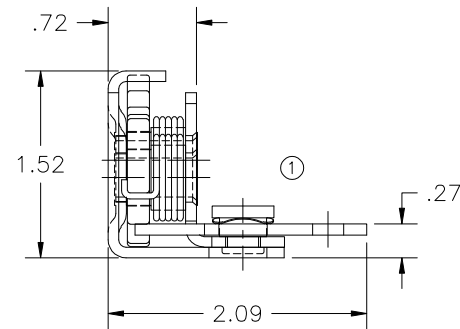
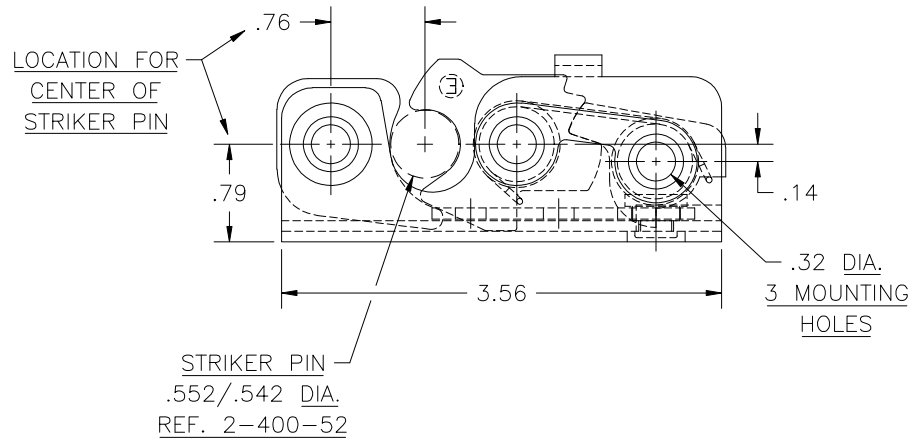


NO	CHANGE	ENG.NO.	DATE
	RELEASED	EN 4538	5-22-92
1	REVISED VIEWS	EN 4642	5-27-94
2	ADDED FMVSS 206 STICKER	EN 5383	12-19-08



NOTES:

- 1) USE .312 DIA. GRADE 8 BOLTS FOR INSTALLATION TO PASS F.M.V.S.S. 206 SAFETY STANDARDS.
- 2) RECOMMENDED TORQUE FOR TIGHTENING 130 ±10 IN./LBS.



CUSTOMER PRINT  
SHEET 1 OF 2  
RIGHT HAND SHOWN  
LEFT HAND OPPOSITE

**EBERHARD MANUFACTURING CO.**  
DIVISION OF  
THE EASTERN COMPANY  
CLEVELAND, OHIO 44136-6697

UNLESS OTHERWISE SPECIFIED TOLERANCES ARE AS FOLLOWS:  ANGLES: ±2' 2 PLACE DEC.: ±.03 3 PLACE DEC.: ±.015 ALL HOLES: ±.005	DATE 5-19-92	NAME  ROTARY LOCK & ACTUATOR LEVER
	DR.BY SAA	
	MATERIAL	PART NUMBER 450-R/L
	SCALE FULL	
	CHK.BY	