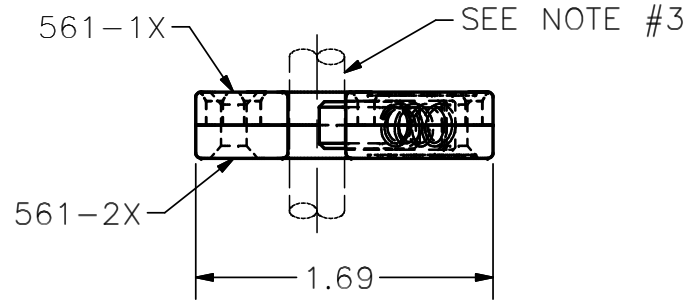
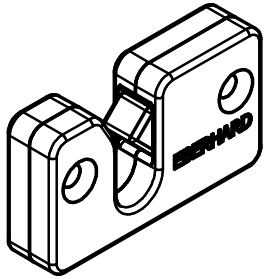
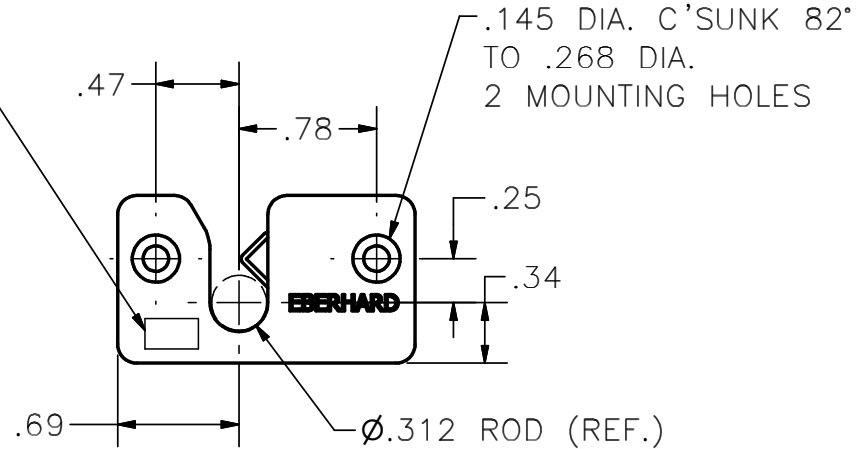
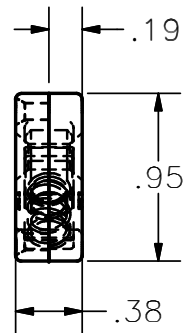


**CONFIDENTIAL NOTICE:** This drawing and the designs, specifications and engineering information disclosed herein are the property of Eberhard Manufacturing Company and are not to be disseminated or reproduced without express written consent. The drawing is loaned in confidence and then only for consideration of the matter disclosed herein. In accepting loan of this drawing, recipient agrees to keep it and the matter disclosed herein in confidence and not to use nor permit their use in any way detrimental to Eberhard Manufacturing Company, Division of the Eastern Company. 21944 Drake Road, Cleveland, Ohio 44149-9712 © 2013 EBERHARD MFG. CO.



VENDOR BATCH CONTROL LABEL



NOTES:

1. MAXIMUM: LOAD 100 LBS.
2. SUGGESTED FASTENER: NO. 6 FLAT HEAD.
3. ROD DIA. = .312".
4. FINISH: ZINC w/YELLOW DICHROMATE, FC (64)

SUPERSEDES DRAWING 561 SHEET 1 OF 2 DATED 2-7-94.

CUSTOMER PRINT SHEET 1 OF 2

LINEAR MEASURE: INCH	
UNLESS OTHERWISE SPECIFIED TOLERANCES ARE AS FOLLOWS:	
	IN      MM
ANGLES:	± 2'    ± 2'
2 PLACE DEC.:	± .03    ± .76
3 PLACE DEC.:	± .015   ± .38
ALL HOLES:	± .005   ± .13

DATE 2/1/2013	<b>EBERHARD MANUFACTURING CO.</b> DIVISION OF <b>THE EASTERN COMPANY</b> CLEVELAND, OHIO 44149-9712
DR. BY FLP	
SCALE FULL	
CHK. BY	
THIS DOCUMENT IS IN ACCORDANCE WITH ASME Y14.15-2009	

NAME <b>ROD LATCH</b>	
MATERIAL <b>ZAMAK 5</b>	PART NUMBER <b>561</b>

REV	DESCRIPTION	EN	DATE
	REVISED, REDAWN AND CONVERTED TO 3D	5589	2-1-13

C:\Working\_Folder\Archive\Pro\515XX\561 SH11.idw