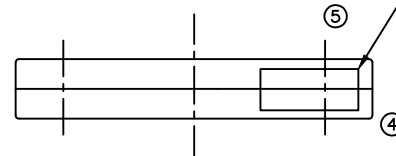
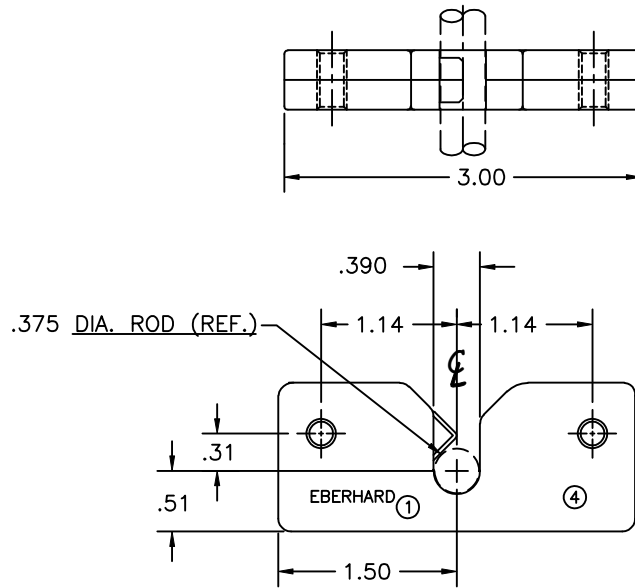
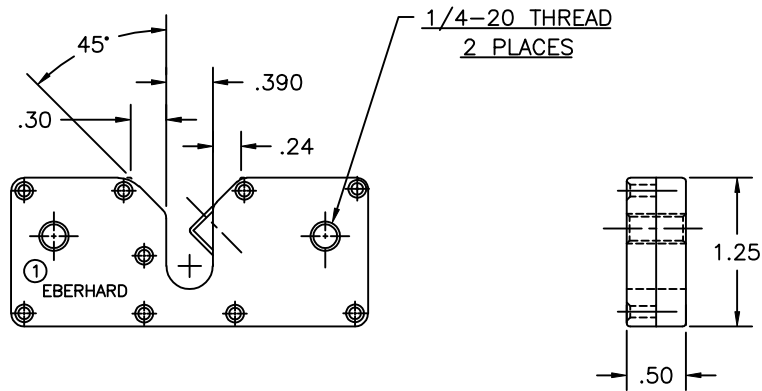


563 SH1

**CONFIDENTIAL NOTICE:** This drawing and the designs, specifications and engineering information disclosed hereon are the property of Eberhard Manufacturing Company and are not to be disseminated or reproduced without express written consent. The drawing is loaned in confidence and then only for consideration of the matter disclosed hereon. In accepting loan of this drawing, recipient agrees to keep it and the matter disclosed hereon in confidence and not to use nor permit their use in any way detrimental to Eberhard Manufacturing Company, Division of the Eastern Company, 21944 Drake Road, Cleveland, Ohio 44149-9712 © 2007 EBERHARD MFG. CO.

NO	CHANGE	ENGLNO.	DATE
	RELEASED	EN 4959	8-25-00
1	"EBERHARD" LOGO MOVED	EN 5345	03-28-08
2	ZAMAK 5, WAS ZAMAK 3	EN 5438	1-29-10
3	ADDED BATCH CODE LABEL	EN 5454	5-21-10
4	ADDED BOTTOM VIEW, MOVED COUNTRY OF ORIGIN STICKER TO BOTTOM VIEW	EN 5494	3-11-11
5	REVISED BOTTOM VIEW	EN 5505	5-27-05



③  
VENDOR BATCH  
CONTROL LABEL  
ON BOTTOM

CUSTOMER PRINT  
SHEET 1 OF 2

NOTES:  
1. MAXIMUM: LOAD 750#

FINISH:  
(64) ZINC W/YELLOW DICHRMATE

MATERIAL: ②  
(CASE & SLIDE BOLT - ZAMAK 5)

**EBERHARD MANUFACTURING CO.**  
DIVISION OF  
THE EASTERN COMPANY  
CLEVELAND, OHIO 44149-9712

UNLESS OTHERWISE SPECIFIED  
TOLERANCES ARE AS FOLLOWS:

ANGLES: ±2°  
2 PLACE DEC.: ±.03  
3 PLACE DEC.: ±.015  
ALL HOLES: ±.005

DATE  
8-18-00  
DR. BY  
A.L.  
SCALE  
FULL  
CHK. BY

NAME

.375 DIA. ROD LATCH

MATERIAL

PART NUMBER

SEE NOTE

563