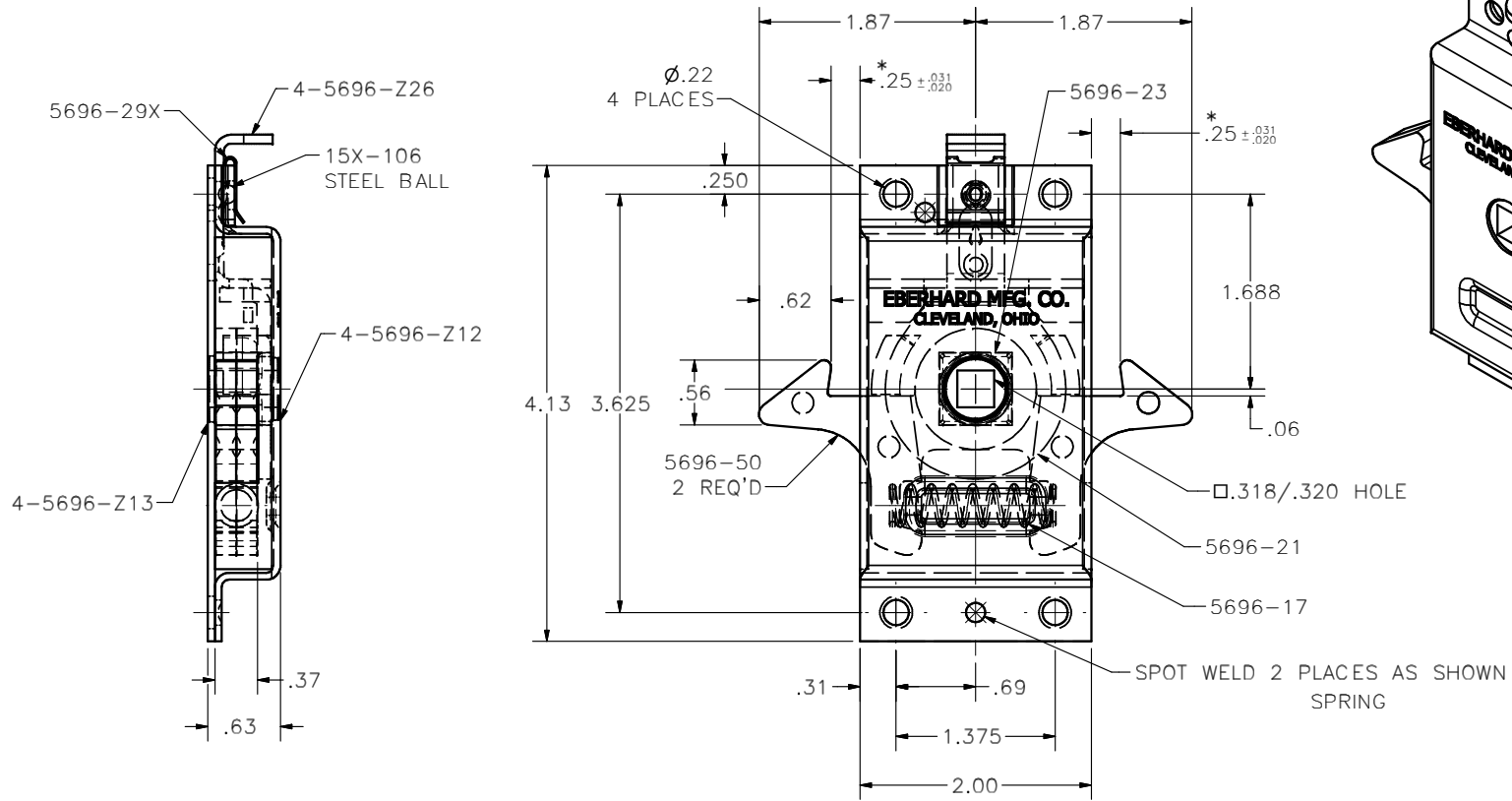


CONFIDENTIAL NOTICE: This drawing and the designs, specifications and engineering information disclosed hereon are the property of Eberhard Manufacturing Company and are not to be disseminated or reproduced without express written consent. The drawing is loaned in confidence and then only for consideration of the matter disclosed hereon. In accepting loan of this drawing, recipient agrees to keep it and the matter disclosed hereon in confidence and not to use nor permit their use in any way detrimental to Eberhard Manufacturing Company, Division of the Eastern Company, 21944 Drake Road, Cleveland, Ohio 44149-9712. © 2013 EBERHARD MFG. CO.

REVISION HISTORY			
REV	DESCRIPTION	EN	DATE
1	CONVERTED TO 3D	5616	8-9-13



NOTES:

1. THUMB LATCH TO MOVE AT 2-5 LBS. TENSION AFTER WELDING. CHECK TENSION AND FUNCTION.
2. NO WELD SPLATTER ALLOWED IN HOLES.
3. ALL INNER MOVING PARTS TO BE GREASED AT ASSEMBLY.
- \*4. .25 +.031/-.020 DIM. TO BE CHECKED BEFORE SHIPPING.

PATENTED

THIS DOCUMENT IS IN ACCORDANCE WITH ASME Y14.15-2009	
LINEAR MEASURE: INCH	DATE 8/9/2013
UNLESS OTHERWISE SPECIFIED TOLERANCES ARE AS FOLLOWS:	DR BY FLP
IN MM	SCALE FULL
ANGLES: ± 2° ± 2'	CHK BY
2 PLACE DEC.: ± .03 ± .76	
3 PLACE DEC.: ± .015 ± .38	
ALL HOLES: ± .005 ± .13	

EBERHARD MANUFACTURING CO. DIVISION OF THE EASTERN COMPANY CLEVELAND, OHIO 44149-9712	
NAME SLIDING DOOR LOCK WITH THUMB LATCH	
MATERIAL -----	PART NUMBER 5696-Z

SUPSEDES DRAWING 5696-Z DATED 2-15-96.