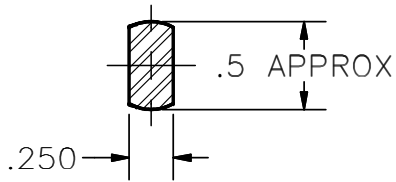
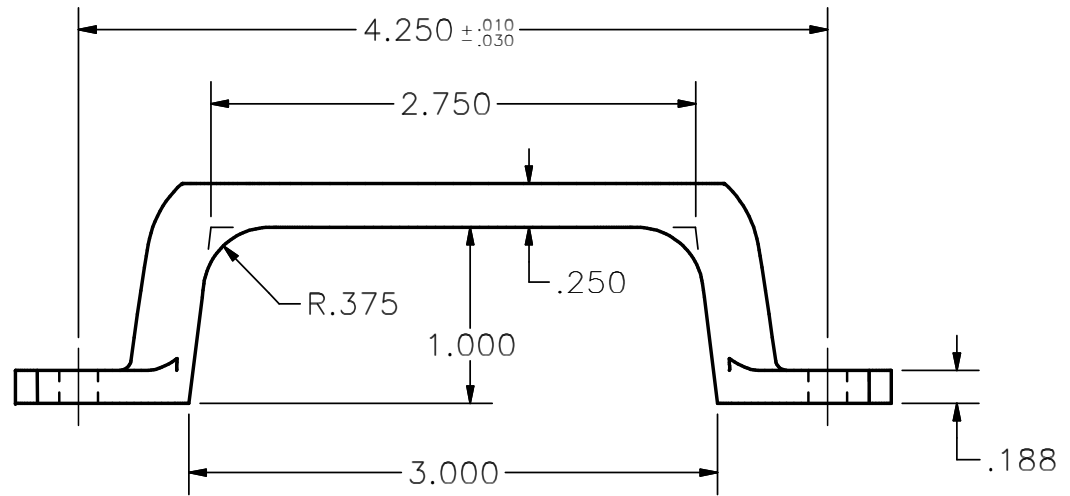
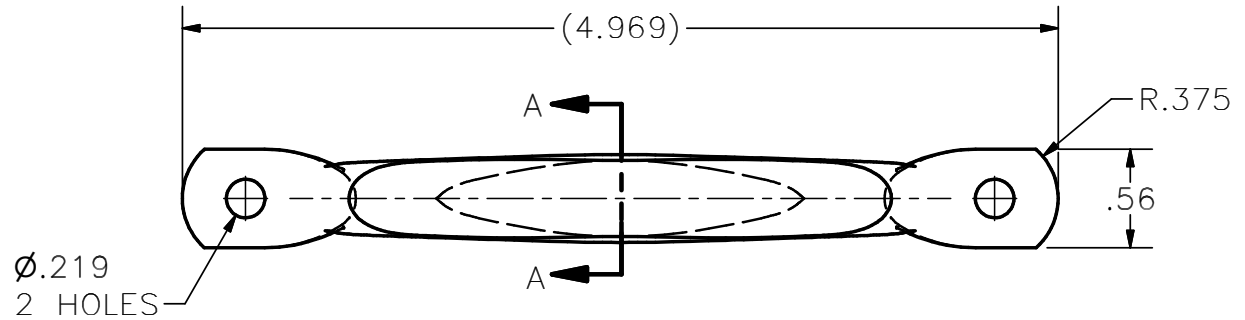


**CONFIDENTIAL NOTICE:** This drawing and the designs, specifications and engineering information disclosed hereon are the property of Eberhard Manufacturing Company and are not to be disseminated or reproduced without express written consent. The drawing is loaned in confidence and then only for consideration of the matter disclosed hereon. In accepting loan of this drawing, recipient agrees to keep it and the matter disclosed hereon in confidence and not to use nor permit their use in any way detrimental to Eberhard Manufacturing Company, Division of the Eastern Company. 21944 Drake Road, Cleveland, Ohio 44149-9712 © 2013 EBERHARD MFG. CO.



SECTION A-A  
SCALE 1 : 1



NOTE: FINISHES:

- A. PLAIN, FC (01)
- B. BRIGHT CHROME, FC (04)
- C. HOT DIP GALVANIZE, FC (13)
- D. ELECTROPLATED ZINC (.0005), FC (24)
- E. ELECTROPLATED ZINC (.0002), FC (25)
- F. BLACK OXIDE WITH OIL, FC (43)

**SUPERSEDES DRAWING 9611 DATED 7-10-97.**

LINEAR MEASURE: INCH UNLESS OTHERWISE SPECIFIED TOLERANCES ARE AS FOLLOWS:		DATE 8/30/2013	EBERHARD MANUFACTURING CO. DIVISION OF THE EASTERN COMPANY CLEVELAND, OHIO 44149-9712		NAME HOOD HANDLE
ANGLES: 2 PLACE DEC.: ±.03 3 PLACE DEC.: ±.015 ALL HOLES: ±.005	IN MM ±.2' ±.2' ±.03 ±.38 ±.13 ±.13	DR. BY FLP	SCALE FULL	CHK. BY THIS DOCUMENT IS IN ACCORDANCE WITH ASME Y14.15-2009	MATERIAL C1008 3/8 DIA. COLD ROLLED STEEL
				PART NUMBER 9611	

CONVERTED TO 3D	5619	8-30-13
REV	DESCRIPTION	EN DATE

4

3

2

1