

Clamping Pins• self-locking, with span compensation EH 22360.



Product Description

All versions are corrosion resistant.
Version with ergonomic grip.
Used for locking and simultaneously tightly connecting thin walled plates. Clamping distance of 5 mm for clamping of sheets for welding work, for protection, coverings, to close doors etc.

Material

Pin part
• Stainless Steel 1.4305

Handle
• Thermoplastic PA 6, grey

Spring
• Stainless steel

Operation

The balls are unlocked by pressing the knob.

More information

Notes

- RoHS compliant
- REACH compliant
- Free of conflict minerals

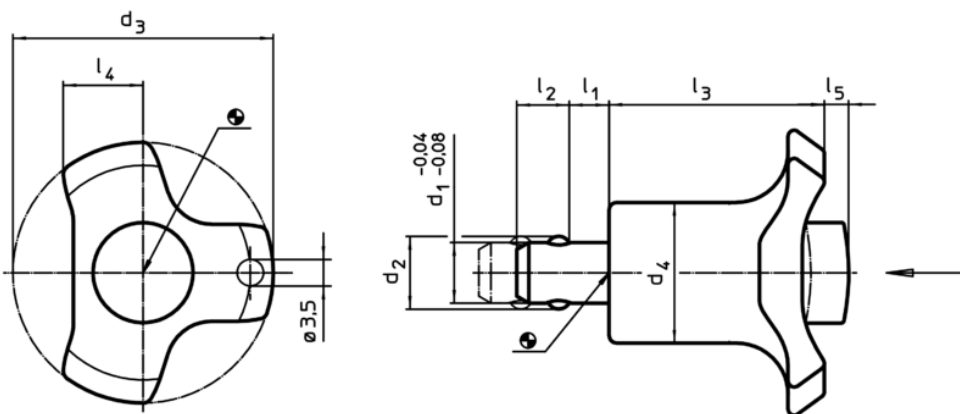
Accessories

Can easily be fitted with retaining cable
EH 22400.

Further products

- Locating Bushings, for ball lock pins and socket pins
- Retaining Cables

Drawing



Order information

d ₁ -0,04 -0,08	l ₁	d ₂	d ₃	Dimensions					Location hole H11 [mm]	Clamping force max. [N]	Temperature		Weight [g]	Art. No.	
				d ₄	l ₂	l ₃	l ₄	l ₅ Unclamped			min.	max.			
[mm]															[°C]
6	0 – 5	7,0	38	17,5	5,0	30,2	11,0	3	6	16	-30	80	19	22360.0010	
6	5 – 10	7,0	38	17,5	5,0	30,2	11,0	3	6	18	-30	80	23	22360.0012	
8	0 – 5	9,5	38	17,5	6,5	30,2	11,0	3	8	16	-30	80	22	22360.0020	
8	5 – 10	9,5	38	17,5	6,5	30,2	11,0	3	8	18	-30	80	25	22360.0022	
10	0 – 5	12,0	47	23,0	8,7	36,0	11,0	4	10	21	-30	80	45	22360.0030	
10	5 – 10	12,0	47	23,0	8,7	36,0	11,0	4	10	23	-30	80	47	22360.0032	
12	0 – 5	14,0	47	23,0	9,4	36,0	13,5	4	12	21	-30	80	47	22360.0040	
12	5 – 10	14,0	47	23,0	9,4	36,0	13,5	4	12	23	-30	80	54	22360.0042	

Application example

