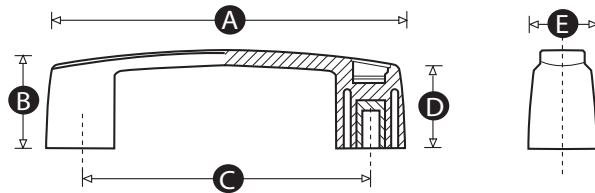


Model 01C BH - Bridge Handle

Below you will find the standard version of this product which is suitable for most applications. However all our products can easily be produced in different moulding materials (including ABS, polypropylene or different levels of glass filled nylon), with different insert materials (such as stainless steel, brass, alloy or various zinc plating) and with non-standard thread lengths and/or sizes. The MOQ for most modifications is only 300 pieces so please feel free to contact our Sales Team, who will be happy to advise and quote for exactly the product you need.



PATTERN	PART NO.	A	B	C	D	E	THREAD SIZE	WEIGHT (g)
2093/F	7759V	119.5	35	93.4	29	26	M6	43.7
2093/F	7760R	119.5	35	93.4	29	26	M8	48.2
2117/F	7762U	145	40	117	34	29	M6	58.8
2117/F	7761Y	145	40	117	34	29	M8	63.8
2132/F	7798T	163	45	132	38	31	M6	68.8
2132/F	7800W	163	45	132	38	31	M8	73.5
2179/F	7999S	213	50	179	42.5	35	M8	108.5
2179/F	7799P	213	50	179	42.5	35	M10	122.3
2179/F	7801S	213	50	179	42.5	35	M12	136.7

Material: 15% glass filled nylon (PA6)
 Insert Material: Brass
 Standard colour: Black with black caps
 Available Colours: A wide range of RAL colours can be produced - MOQs apply

Note: This product consists of 3 parts: the handle and 2 caps - different colour combinations are possible - there is no added charge for differently coloured caps

All dimensions are in mm (unless otherwise stated) and are approximate. All weights are in grams and are approximate.



RencolComponents Ltd.

Unit 2, Avonbridge Estate - Atlantic Road - Avonmouth - Bristol BS11 9QD - UK - Tel: +44 117 916 0090 - Fax +44 117 982 2235

www.rencol.com