

ST

Material

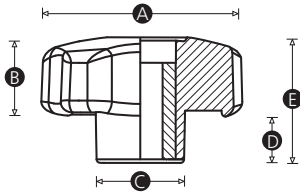
Two-part mouldings - Inner moulding Polypropylene - Over moulded with 'Soft Touch' TPE

Female insert material

Brass

Standard colour

Black



Part No.	A	B	C	D	E	Thread size
10779T	28	16	12	10	26	M5
10781W	28	16	12	10	26	M6
10788Q	40	17	18	12	29	M6
10791P	40	17	18	12	29	M8
10800X	50	19	21	12	31	M6
10802P	50	19	21	12	31	M8
10811X	60	21	23	13	34	M8
10813P	60	21	23	13	34	M10
11180V	60	21	23	13	34	M12