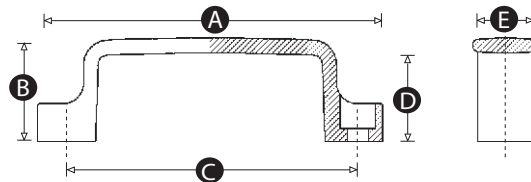


## Model 02 BH - Bridge Handle

Below you will find the standard version of this product which is suitable for most applications. However all our products can easily be produced in different moulding materials (including ABS, polypropylene or different levels of glass filled nylon), with different insert materials (such as stainless steel, brass, alloy or various zinc plating) and with non-standard thread lengths and/or sizes. The MOQ for most modifications is only 300 pieces so please feel free to contact our Sales Team, who will be happy to advise and quote for exactly the product you need.



PATTERN	PART NO.	A	B	C	D	E	BORE SIZE	TO FIT SOCKET HEAD CAP SCREW	WEIGHT (g)
3093	9937V	110	36	93.5	30	21	6.5	M6	21.0
3117	9938R	137	41	117	35	27	8.5	M8	41.0
3132	9939Y	153	45	132	38	27	8.5	M8	41.0

Material: 15% glass filled nylon (PA6)  
 Standard Colour: Black  
 Available colours: A wide range of RAL colours can be produced - MOQs apply

All dimensions are in mm (unless otherwise stated) and are approximate. All weights are in grams and are approximate.



**RencolComponents** Ltd.

Unit 2, Avonbridge Estate - Atlantic Road - Avonmouth - Bristol BS11 9QD - UK - Tel: +44 117 916 0090 - Fax +44 117 982 2235

[www.rencol.com](http://www.rencol.com)