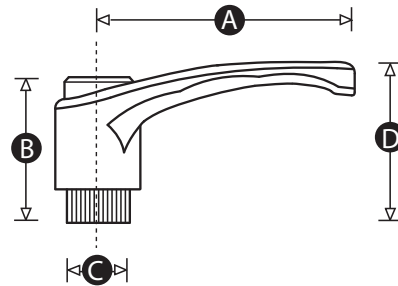


Model 02 CH - Clamping Handle Female

Below you will find the standard version of this product which is suitable for most applications. However all our products can easily be produced in different moulding materials (including ABS, polypropylene or different levels of glass filled nylon), with different insert materials (such as stainless steel, brass, alloy or various zinc plating) and with non-standard thread lengths and/or sizes. The MOQ for most modifications is only 300 pieces so please feel free to contact our Sales Team, who will be happy to advise and quote for exactly the product you need.



Cap colours:



PATTERN	PART NO. Black/ Red	PART NO. Orange/ Grey	PART NO. Black/ Black	A	B	C	D	THREAD SIZE	WEIGHT (g)
3843	11478R	11505T	11572P	43	29	12	30	M5	13.0
3843	11479Y	11506P	11573W	43	29	12	30	M6	15.0
3865	11480U	11507W	11574S	65	38	15	44	M6	26.0
3865	11481Q	11508S	11393Q	65	38	15	44	M8	31.0
3883	11482X	11509Z	11575Z	83	47	19	54	M8	47.0
3883	11411V	11510V	11576V	83	47	19	54	M10	50.0
38104	11484P	11511R	11577R	104	56	24	64	M10	72.0
38104	11485W	11512Y	11578Y	104	56	24	64	M12	76.0
38104	11486S	11513U	11579U	104	56	24	64	M16	80.0

Material: High impact resistant thermoplastic - matt finish
Insert material: Brass
Standard Colour: Black handle + red cap / Orange handle + grey cap / Black handle + black cap
Colour Options: A wide range of RAL colours can be produced - MOQs apply

Note: This product consists of 2 parts: the handle and a cap - different colour combinations are possible - there is no added charge for different coloured caps

All dimensions are in mm (unless otherwise stated) and are approximate. All weights are in grams and are approximate.



RencolComponents Ltd.

Unit 2, Avonbridge Estate - Atlantic Road - Avonmouth - Bristol BS11 9QD - UK - Tel: +44 117 916 0090 - Fax +44 117 982 2235

www.rencol.com