



**Handle material**

Reinforced nylon (15% glass filled PA6)

**Female insert material**

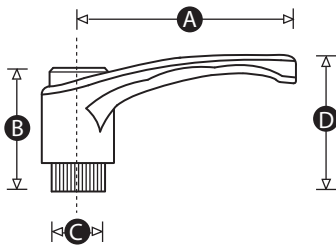
Brass, stainless steel or zinc plated steel as standard.

**Standard colour combinations**

Black handle with red cap, black handle with orange cap, orange handle with grey cap.

**Options**

Also available with caps in red, black, grey, white, blue, green, yellow or orange (MOQs apply). Other handle RAL colours available on request (MOQs apply).



Part No.	A	B	C	D	Thread size	Insert material	Handle + cap colour
12606P	43	29	12	30	M5	Stainless steel	Black + Orange
12625Q	43	29	12	30	M5	Steel	Black + Orange
12605T	43	29	12	30	M6	Stainless steel	Black + Orange
12624U	43	29	12	30	M6	Steel	Black + Orange
12605T	43	29	12	30	M6	Steel	Black + Red
12604X	65	38	15	44	M6	Stainless steel	Black + Orange
12623Y	65	38	15	44	M6	Steel	Black + Orange
12603Q	65	38	15	44	M8	Stainless steel	Black + Orange
12612Y	65	38	15	44	M8	Steel	Orange + Black
12622R	65	38	15	44	M8	Steel	Black + Orange
12603Q	65	38	15	44	M8	Steel	Black + Red
12602U	83	47	19	54	M8	Stainless steel	Black + Orange
12613U	83	47	19	54	M8	Steel	Orange + Black
12621V	83	47	19	54	M8	Steel	Black + Orange

Continued overleaf »

« Continued from overleaf

<b>Part No.</b>	<b>A</b>	<b>B</b>	<b>C</b>	<b>D</b>	<b>Thread size</b>	<b>Insert material</b>	<b>Handle + cap colour</b>
12601Y	83	47	19	54	M10	Stainless steel	Black + Orange
12614Q	83	47	19	54	M10	Steel	Orange + Black
12620Z	83	47	19	54	M10	Steel	Black + Orange
12600R	83	47	19	54	M12	Stainless steel	Black + Orange
12615X	83	47	19	54	M12	Steel	Orange + Black
12626X	83	47	19	54	M12	Steel	Black + Orange
12620Z	83	47	19	54	M10	Steel	Black + Red
11485W	104	56	24	64	M12	Brass	Black + Red
11579U	104	56	24	64	M16	Brass	Black + Black