



**Material**

High impact resistant thermoplastic

**Standard colour**

Black

**Finish**

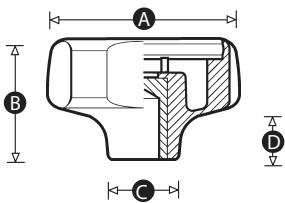
Matt

**Female insert material**

Brass

**Cap colours**

Black as standard. Caps available in many different RAL colours (MOQs apply).



Part No.	A	B	C	D	Thread size
8585R	30	21	12	10	M5
8587U	30	21	12	10	M6
7938U	40	27	16	12	M6
7942P	40	27	16	12	M8
7881R	50	33	18	13	M6
7880V	50	33	18	13	M8
7879Z	50	33	18	13	M10
7960U	60	40	25	16	M8
7964P	60	40	25	16	M10
7963T	60	40	25	16	M12
7962X	75	52	26	20	M10
7961Q	75	52	26	20	M12
7965W	75	52	26	20	M16