

**Material**

High impact resistant thermoplastic

**Standard colour**

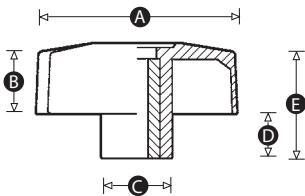
Black

**Finish**

Matt

**Female insert material**

Brass



Part No.	A	B	C	D	E	Thread size
8972U	28	11	11	6	17	M5
5114T	28	11	11	6	17	M6
8976P	40	12	15	8	20	M6
9746P	40	12	15	8	20	M8
8968Z	50	15	15	9	24	M8
8964T	60	18	20	12	30	M10