

Material

High impact resistant thermoplastic

Standard colour

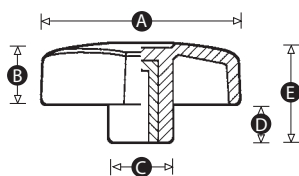
Black

Finish

Matt

Thread material

Brass or zinc plated steel



Part No.	A	B	C	D	E	Thread size	Thread material
8973Q	28	11	11	6	17	M5	Brass
5096Y	28	11	11	6	17	M6	Brass
8977W	40	12	15	8	20	M6	Brass
15161S	40	12	15	8	20	M6	Zinc plated steel
8958V	40	12	15	8	20	M8	Brass
15162Z	40	12	15	8	20	M8	Zinc plated steel
4818U	50	15	15	9	24	M6	Brass
8969V	50	15	15	9	24	M8	Brass
4822Y	60	18	19	12	30	M8	Brass
15169T	60	18	19	12	30	M8	Zinc plated steel
8965P	60	18	19	12	30	M10	Brass