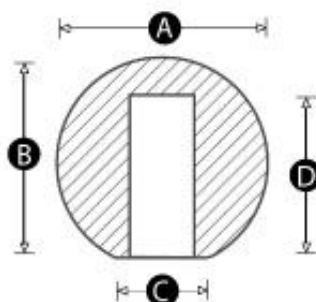


# Model 19 PK - Threaded Ball Knob Female (self fixing):



## Actions / Downloads:

- [Print](#)



**Material:** High impact resistant thermoplastic

**Standard Colour:** Black. Other RAL colours on request (MOQs apply).

**Finish:** Matt Finish

**Thread:** Self-Fixing knock on assembly

**Shaft Diameter:** Imperial and metric sizes



**NEXT-DAY UK DELIVERY  
ON STOCK ITEMS**






**INTERNATIONAL SHIPPING**



Please refer to the table below for types and sizes of this product. Once you have found the exact component you require, select the **'Quote'** button. In the fields provided, enter the quantity you require and add any special options or non-standard colours / threads.

**We will reply by email within one working day with a price and delivery schedule.**

PATTERN	PART NO.	A	B	C	D	Shaft type	To fit shaft diameter - H9 tolerance (mm)	To fit shaft diameter - H9 tolerance (inches)	Stocked Item	MOQ	QUOTE REQUEST
401/SF	14291W	20	19	10	15	Plain	5	0.1875	Yes	10	<a href="#">Quote</a>
402/SF	9977P	25	23	13	17	Plain	6	0.25	Yes	10	<a href="#">Quote</a>
402/SF	9943T	25	23	13	17	Plain	8	0.3125	No	500	<a href="#">Quote</a>
403/SF	9899T	32	30	14	24	Plain	8	0.3125	Yes	10	<a href="#">Quote</a>
403/SF	9978W	32	30	14	24	Plain	10	0.375	No	500	

404/SF	9979S	38 36 18 27 Plain	10	0.375	Yes	10	
404/SF	9980Z	38 36 18 27 Plain	12	0.5	Yes	50	
406/SF	14292S	50 49 19 40 Plain	12	0.5	Yes	10	

© Rencol Components Ltd. Company No. 07043676