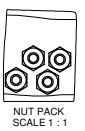
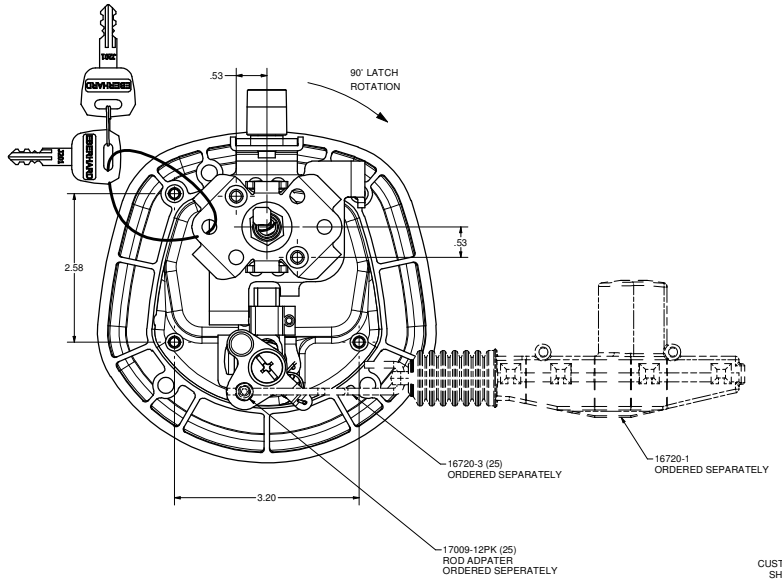
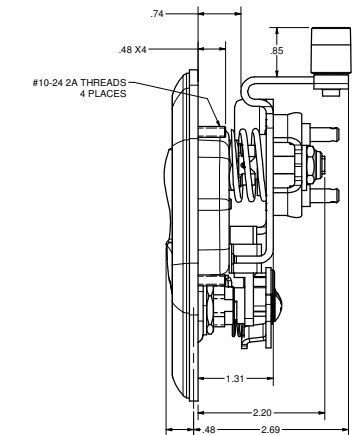
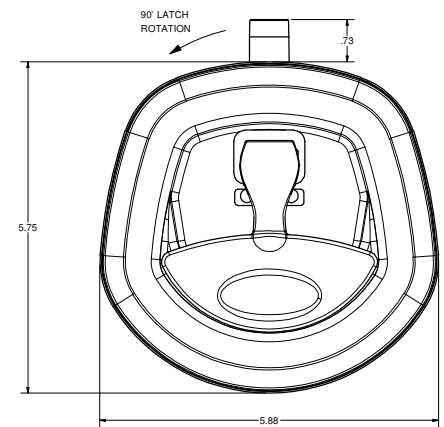
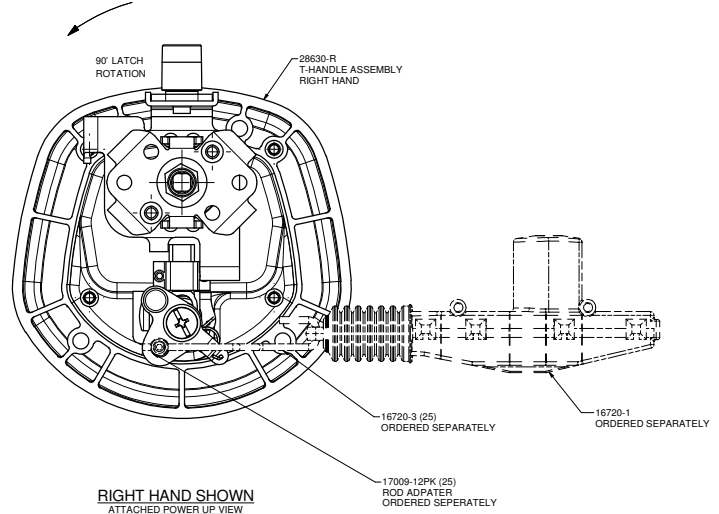
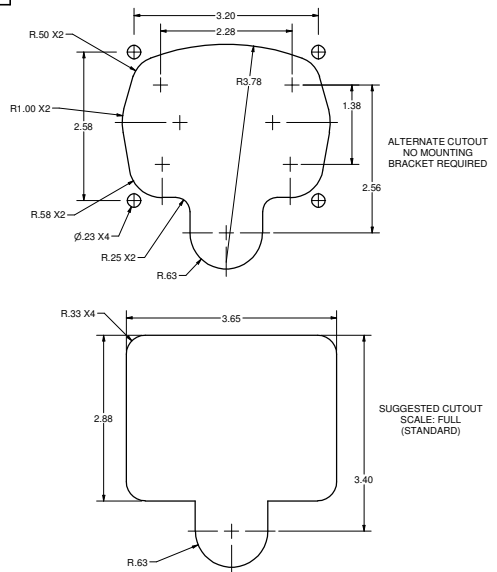
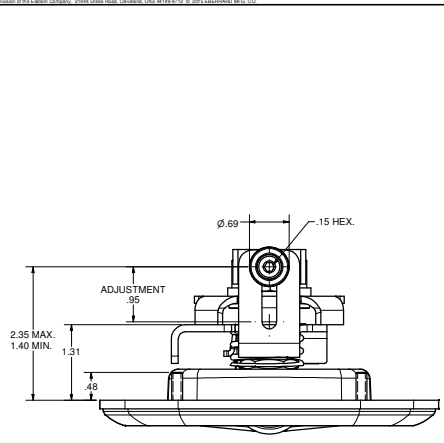


CONFIDENTIAL NOTICE: This drawing and the design identification and engineering information contained herein are the property of Eberhard Manufacturing Company, and are not to be distributed or reproduced without written consent. The drawing is issued in confidence and may only be used for the purpose of manufacturing. It is not to be used for any other purpose without the written consent of Eberhard Manufacturing Company. © 2012 Eberhard Manufacturing Company. All rights reserved.

REV	DESCRIPTION OF CHANGE	DATE	BY	CHKD	APP'D
1	ISSUE FOR PRODUCTION OF PARTS				



NOTES:
 1. FINISHES:
 A. BRIGHT POLISHED RECEPTACLE AND CHROME HANDLE: FC (03)
 B. BLACK POWDER (TEXTURED) RECEPTACLE AND HANDLE: FC (42)
 C. BLACK POWDER (TEXTURED) RECEPTACLE AND CHROME HANDLE: FC (35)
 2. 35 IN-LBS MAX. TORQUE ON MOUNTING STUDS
 3. KEY CYLINDER WITH 10 KEY CHANGES, J201 THRU J210
 SUPPLIED WITH TWO DOUBLE BITTED KEYS
 EXAMPLE ORDER AS: 28630-RL-JXXX-XX

FINISH CODE (SEE NOTE #1)
 KEY NUMBER

CUSTOMER PRINT SHEET 1 OF 2
 LEFT HAND SHOWN RIGHT HAND OPPOSITE

PATENTED			THIS DOCUMENT IS UNCLASSIFIED WITH EXCEPT WHERE SHOWN OTHERWISE	
ASSEMBLY P/N	MOUNTING BRACKET KIT P/N	NUT PACK	DATE	REV
P-28630-RL	NONE	NONE	11/15/08	1
P-28630-RLPK	NONE	INCLUDED		
P-28630A-URL	28400A-80U	NONE		
P-28630B-URL	28400B-80U	NONE		
P-28630C-URL	28400C-80U	NONE		
P-28630D-URL	28400D-80U	NONE		
DIMENSIONS UNLESS SPECIFIED IN 1/16" INCHES DIMENSIONS ARE AS SHOWN ANGLES: 30 15 45 15 90 15 120 15 135 15 180 15 270 15 360 15 UNLESS OTHERWISE SPECIFIED TOLERANCES ARE AS FOLLOWS: DIMENSIONS: ± .005 ± .002 HOLE DIA: ± .005 ± .002 ALL HOLES: ± .005 ± .002			KEY LOCKING / PADLOCKABLE COMPRESSION LATCH POWER LOCKING	P-28630-RL

C:\Working_Folder\Avalanche\Fig228630.P-28630-RL.CH (8/11/08)