

SPRING LOADED HINGES

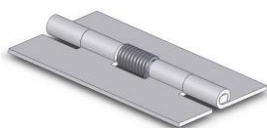


OPEN POSITION



CLOSED POSITION

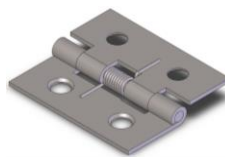
| CODE | MATERIAL | MATERIAL THICKNESS | OPEN WIDTH | LENGTH | PIN SIZE | HOLE SIZE | SPRING ACTION |
|-------------------|----------|--------------------|------------|--------|----------|-----------|--------------------|
| BH5015SS | 304 SS | 0.25 | 0.75 | 1.25 | 0.066 | N/A | Closed |
| BH5020 | Steel | 0.35 | 1.063 | 1.25 | 0.091 | #3 | Closed |
| BH502001 | 304 SS | 0.35 | 1.063 | 1.25 | 0.091 | #3 | Reverse Assembled* |
| BH5030 | Steel | 0.35 | 1.063 | 2 | 0.091 | N/A | Open |
| BH5033 | Steel | 0.39 | 1.062 | 1.25 | 0.091 | 0.13 | Open |
| BH5030SS01 | 304 SS | 0.35 | 1.25 | 2 | 0.091 | #3 | Closed |
| BH5031SS | 304 SS | 0.35 | 1.5 | 2 | 0.091 | 0.141 | Open |
| BH5085 | Steel | 0.05 | 2.75 | 1.562 | 0.115 | 0.156 | Open |
| BH5087 | Steel | 0.05 | 3.25 | 1.562 | 0.115 | 0.156 | Open |
| BH5089SS | 304 SS | 0.06 | 1.5 | 2.5 | 0.12 | N/A | Open |
| BH5090 | Steel | 0.06 | 2 | 3 | 0.125 | N/A | Open |



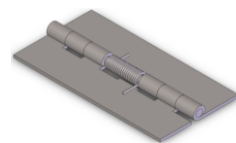
BH5015SS



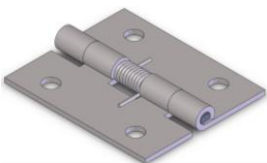
BH5020



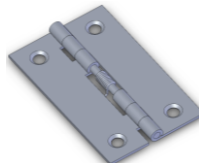
BH502001*



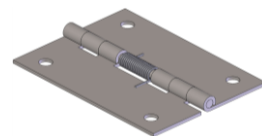
BH5030



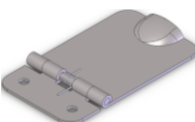
BH5033



BH5030SS01



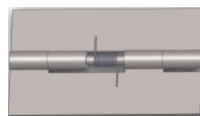
BH5031SS



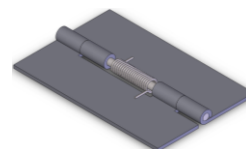
BH5085



BH5087



BH5089SS



BH5090