

## STAINLESS STEEL TRUNK HANDLE



HCT-150



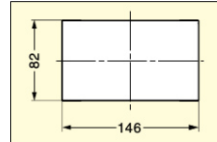
## Features

- Spring powered to automatically close when hands are removed.

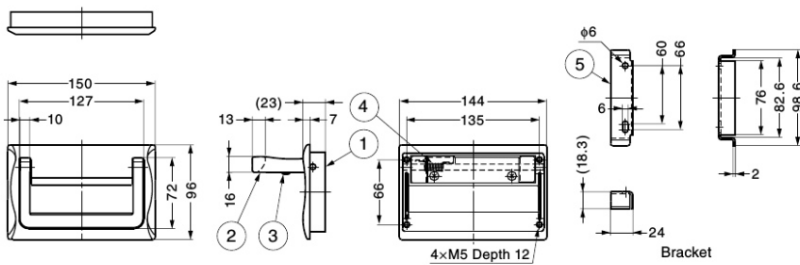
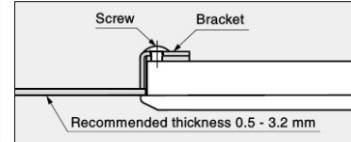
## Parts Included

- M5x12 truss head screw (SUS)
- Bracket for sheet metal (SUS)

## Cut Out Dimensions



## Sheet Metal Mounting Application



No.	Part Name	Material	Finish/Colour
①	Body	Stainless Steel (SCS14)	Mirror
②	Handle	Stainless Steel (SCS14)	Mirror
③	Bumper	Ethylene Propylene Rubber (EPDM)	Black
④	Spring	Stainless Steel (SUS316)	-
⑤	Bracket for Sheet Metal	Stainless Steel (SUS316)	Mirror

\*SCS14 is equivalent of SUS316.

Item Code	Item Name	Load Capacity	Weight	Box	Carton
100-017-557	HCT-150	980 N	100 kgf	5 pcs	20 pcs

## TRUNK HANDLE



TMU-115

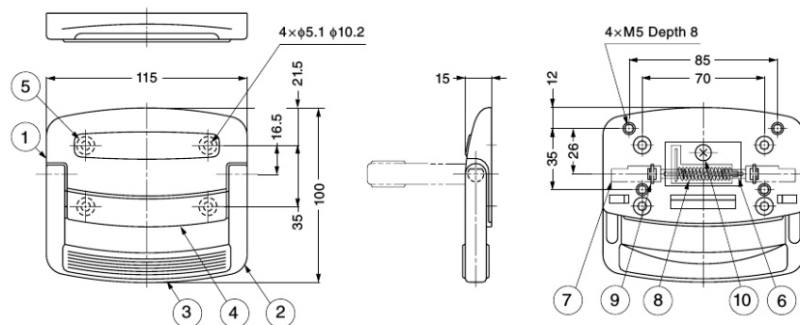


## Features

- Can be front or back mounted.
- Spring powered to automatically close when hands are removed.
- A smaller type (TMU-100) is also available. Please contact us for details.

## Parts Included

- For back mount: M5x6 truss head screw
- For surface mount: Countersunk head wood screw 4.8x25 and 4.8x20



No.	Part Name	Material	Finish/Colour
①	Body	Zinc Alloy (ZDC)	Chrome
②	Handle	Zinc Alloy (ZDC)	Chrome
③	Grip	Elastomer (TPE)	Black
④	Case Cover 1	Elastomer (TPE)	Black
⑤	Case Cover 2	Elastomer (TPE)	Black
⑥	Back Cover	Steel	Yellow Zinc Chromate
⑦	Shaft	Zinc Alloy (ZDC)	Nickel
⑧	Spring	Steel	Yellow Zinc Chromate
⑨	Pivot Ring	-	5103-31
⑩	Screw	Steel	Yellow Zinc Chromate

Item Code	Item Name	Load Capacity	Weight	Box	Carton
100-901-273	TMU-115	392 N	40 kgf	10 pcs	40 pcs