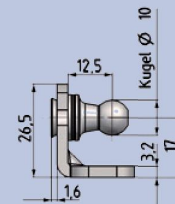
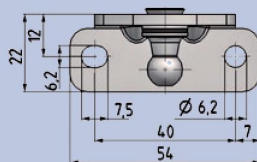
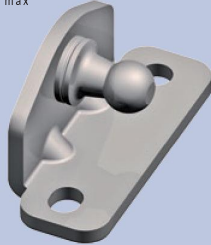


Winkelbleche / Brackets

für Gasfedern / for gas springs

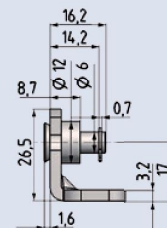
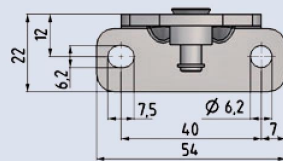
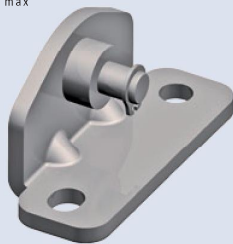
Best.-Nr. / Part No. 8262WE

* F_{max} = 1000 N



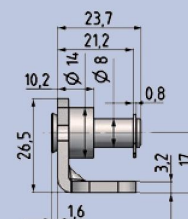
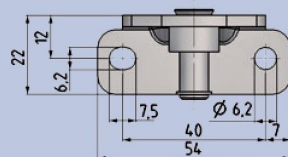
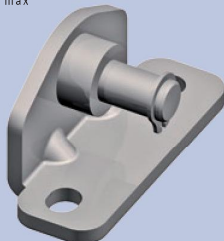
Best.-Nr. / Part No. 8267WG

* F_{max} = 700 N



Best.-Nr. / Part No. 8261WJ

* F_{max} = 1000 N

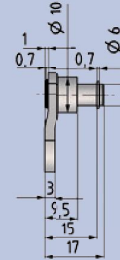
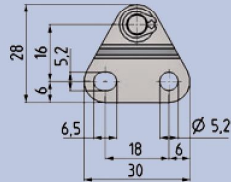
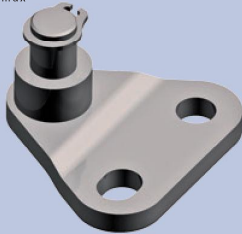


* F_{max} = maximale zulässige Belastung bei 20°C in eingeschobener Position. Material: Stahl, verzinkt.

* F_{max} = maximum allowable force at 20°C in compressed position, Material: steel, zinc-plated.

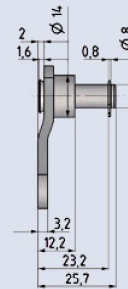
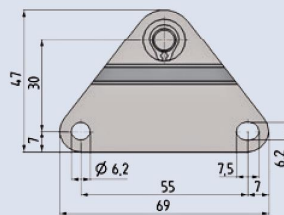
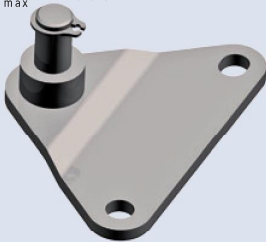
Best.-Nr. / Part No. 8268WB

*F_{max} = 700 N



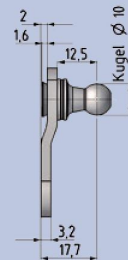
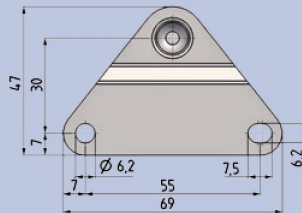
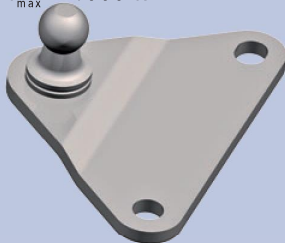
Best.-Nr. / Part No. 8264WV

*F_{max} = 1000 N



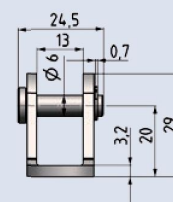
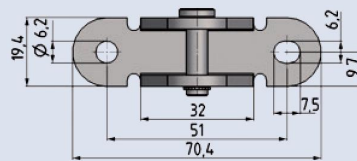
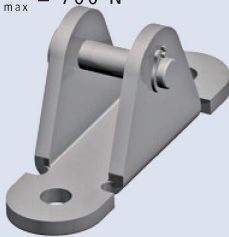
Best.-Nr. / Part No. 8265WQ

*F_{max} = 1000 N



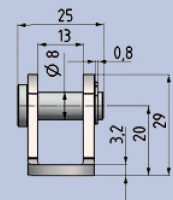
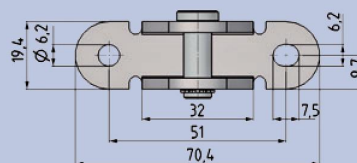
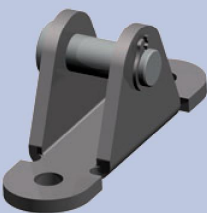
Best.-Nr. / Part No. 023189

*F_{max} = 700 N



Best.-Nr. / Part No. 023083

*F_{max} = 1600 N



*F_{max} = maximale zulässige Belastung bei 20°C in eingeschobener Position. Material: Stahl, verzinkt.

*F_{max} = maximum allowable force at 20°C in compressed position. Material: steel, zinc-plated.

info@de.stabilus.com