

## Locating Bushings• for lifting pins

EH 22350.



## Product Description

Locating bushings are used for quick and safe locating of lifting pins EH 22350. Easily incorporable into different materials. Can be used in thin-walled pieces, such as blind holes. Corrosion and abrasion resistant.

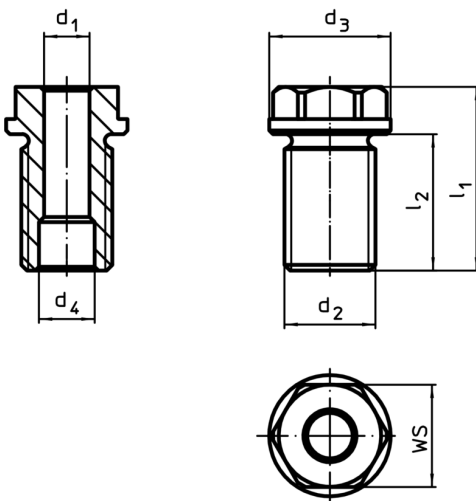
## Material

- Stainless steel 1.4542, precipitation-hardened

## Assembly

Ensure safe tolerances and consistent function. Easily incorporable into different materials. Can be used in thin-walled pieces.

## Drawing



## Order information

| d <sub>1</sub><br>H11 | Dimensions             | For nominal length<br>l<br>[mm] | d <sub>3</sub><br>-0,2 | Dimensions             |                |                | WS<br>[mm] | Tightening torque<br>max.<br>[Nm] | x <sup>1)</sup><br>[mm] | Carrying force <sup>1)</sup> |                |                | For lifting pin    | [g] | Art. No.                   |
|-----------------------|------------------------|---------------------------------|------------------------|------------------------|----------------|----------------|------------|-----------------------------------|-------------------------|------------------------------|----------------|----------------|--------------------|-----|----------------------------|
|                       | d <sub>2</sub><br>[mm] |                                 |                        | d <sub>4</sub><br>+0,3 | l <sub>1</sub> | l <sub>2</sub> |            |                                   |                         | F <sub>1</sub>               | F <sub>2</sub> | F <sub>3</sub> |                    |     |                            |
| 8                     | M16 x 1,5              | 10                              | 24                     | 9,8                    | 27,5           | 20             | 19         | 90                                | 1,5                     | 1,5                          | 1,2            | 0,5            | 22350.0601 / .0701 | 32  | <a href="#">22350.0900</a> |
| 8                     | M16 x 1,5              | 15                              | 24                     | 9,8                    | 27,5           | 20             | 19         | 90                                | 1,5                     | 1,5                          | 1,2            | 0,5            | 22350.0602 / .0702 | 33  | <a href="#">22350.0902</a> |
| 8                     | M16                    | 25                              | 24                     | 9,8                    | 37,5           | 25             | 19         | 75                                | 1,5                     | 1,5                          | 1,2            | 0,5            | 22350.0604 / .0704 | 46  | <a href="#">22350.0904</a> |
| 8                     | M16                    | 35                              | 24                     | 9,8                    | 47,5           | 35             | 19         | 75                                | 1,5                     | 1,5                          | 1,2            | 0,5            | 22350.0606 / .0706 | 55  | <a href="#">22350.0906</a> |
| 10                    | M20 x 1,5              | 15                              | 28                     | 12,2                   | 35,5           | 24             | 24         | 145                               | 1,5                     | 2,7                          | 2,4            | 2,1            | 22350.0621 / .0721 | 70  | <a href="#">22350.0910</a> |
| 10                    | M20 x 1,5              | 25                              | 28                     | 12,2                   | 35,5           | 24             | 24         | 145                               | 1,5                     | 2,7                          | 2,4            | 2,1            | 22350.0623 / .0723 | 73  | <a href="#">22350.0912</a> |
| 10                    | M20                    | 35                              | 28                     | 12,2                   | 46,0           | 29             | 24         | 130                               | 1,5                     | 2,7                          | 2,4            | 2,1            | 22350.0625 / .0725 | 93  | <a href="#">22350.0914</a> |
| 10                    | M20                    | 50                              | 28                     | 12,2                   | 65,0           | 49             | 24         | 130                               | 1,5                     | 2,7                          | 2,4            | 2,1            | 22350.0627 / .0727 | 117 | <a href="#">22350.0916</a> |
| 12                    | M24 x 1,5              | 15                              | 32                     | 14,7                   | 35,5           | 24             | 27         | 220                               | 1,5                     | 3,5                          | 3,2            | 2,8            | 22350.0631 / .0731 | 94  | <a href="#">22350.0920</a> |
| 12                    | M24 x 1,5              | 25                              | 32                     | 14,7                   | 36,5           | 24             | 27         | 220                               | 1,5                     | 3,5                          | 3,2            | 2,8            | 22350.0633 / .0733 | 102 | <a href="#">22350.0922</a> |
| 12                    | M24                    | 35                              | 32                     | 14,7                   | 48,5           | 36             | 27         | 200                               | 1,5                     | 3,5                          | 3,2            | 2,8            | 22350.0635 / .0735 | 119 | <a href="#">22350.0924</a> |
| 12                    | M24                    | 50                              | 32                     | 14,7                   | 72,5           | 60             | 27         | 200                               | 1,5                     | 3,5                          | 3,2            | 2,8            | 22350.0637 / .0737 | 164 | <a href="#">22350.0926</a> |
| 16                    | M30 x 2                | 25                              | 39                     | 19,2                   | 44,0           | 29             | 30         | 440                               | 1,5                     | 4,8                          | 4,5            | 4,1            | 22350.0641 / .0741 | 163 | <a href="#">22350.0930</a> |
| 16                    | M30                    | 50                              | 39                     | 19,2                   | 66,0           | 44             | 30         | 400                               | 1,5                     | 4,8                          | 4,5            | 4,1            | 22350.0643 / .0743 | 236 | <a href="#">22350.0934</a> |
| 16                    | M30                    | 75                              | 39                     | 19,2                   | 96,0           | 74             | 30         | 400                               | 1,5                     | 4,8                          | 4,5            | 4,1            | 22350.0645 / .0745 | 323 | <a href="#">22350.0936</a> |
| 20                    | M36 x 2                | 50                              | 43                     | 26,0                   | 70,0           | 55             | 36         | 440                               | 1,5                     | 10,0                         | 8,5            | 6,5            | 22350.0673 / .0773 | 366 | <a href="#">22350.0954</a> |
| 20                    | M36 x 2                | 75                              | 43                     | 26,0                   | 95,0           | 80             | 36         | 440                               | 1,5                     | 10,0                         | 8,5            | 6,5            | 22350.0675 / .0775 | 503 | <a href="#">22350.0956</a> |

<sup>1)</sup> for a 5-fold safety against breakage

Application example

