

## Locating Bushings, plain• for lifting pins

EH 22350.



### Product Description

Locating bushings are used for quick and safe locating of lifting pins EH 22350. This design is suitable for applications which require installation flush to the surface. Corrosion and abrasion resistant.

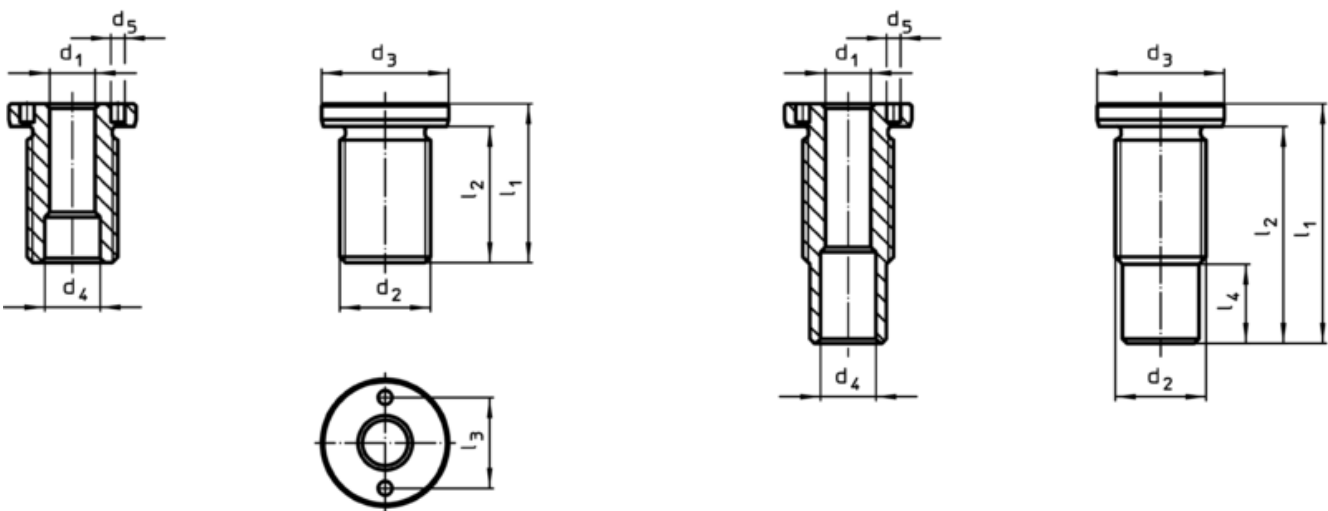
### Material

- Stainless steel 1.4542, precipitation-hardened

### Assembly

Ensure safe tolerances and consistent function. Easily incorporable into different materials. Can be used in thin-walled pieces. Bush can be easily installed via optional assembly tool.

### Drawing



size M16/M16x1,5/M20  
M20x1,5/M24x1,5/M30x2

size M24/M30/M36x2

### Order information



Dimensions		For nominal length l [mm]	Dimensions							Tightening torque max. [Nm]	x <sup>1)</sup> [mm]	Carrying force <sup>1)</sup> [kN]			For lifting pin [g]	Art. No.	
d <sub>1</sub> H11 [mm]	d <sub>2</sub> [mm]		d <sub>3</sub> -0,2	d <sub>4</sub> +0,3	d <sub>5</sub> +0,1	l <sub>1</sub>	l <sub>2</sub>	l <sub>3</sub>	l <sub>4</sub>			F <sub>1</sub>	F <sub>2</sub>	F <sub>3</sub>			
8	M16 x 1,5	10	24	9,8	3,1	25	20	16	-	75	1,5	1,5	1,2	0,5	22350.0601 / .0701	33	<a href="#">22350.1900</a>
8	M16 x 1,5	15	24	9,8	3,1	25	20	16	-	75	1,5	1,5	1,2	0,5	22350.0602 / .0702	33	<a href="#">22350.1902</a>
8	M16	25	24	9,8	3,1	35	30	16	-	75	1,5	1,5	1,2	0,5	22350.0604 / .0704	33	<a href="#">22350.1904</a>
8	M16	35	24	9,8	3,1	45	40	16	-	75	1,5	1,5	1,2	0,5	22350.0606 / .0706	33	<a href="#">22350.1906</a>
10	M20 x 1,5	15	28	12,2	5,1	30	24	20	-	100	1,5	2,7	2,4	2,1	22350.0621 / .0721	70	<a href="#">22350.1910</a>
10	M20 x 1,5	25	28	12,2	5,1	35	29	20	-	100	1,5	2,7	2,4	2,1	22350.0623 / .0723	70	<a href="#">22350.1912</a>
10	M20	35	28	12,2	5,1	45	39	20	-	100	1,5	2,7	2,4	2,1	22350.0625 / .0725	70	<a href="#">22350.1914</a>
10	M20	50	28	12,2	5,1	60	54	20	-	100	1,5	2,7	2,4	2,1	22350.0627 / .0727	70	<a href="#">22350.1916</a>
12	M24 x 1,5	15	32	14,7	5,1	32	26	22	-	150	1,5	3,5	3,2	2,8	22350.0631 / .0731	94	<a href="#">22350.1920</a>
12	M24 x 1,5	25	32	14,7	5,1	40	34	22	-	150	1,5	3,5	3,2	2,8	22350.0633 / .0733	94	<a href="#">22350.1922</a>
12	M24	35	32	14,7	5,1	50	44	22	3,8	150	1,5	3,5	3,2	2,8	22350.0635 / .0735	94	<a href="#">22350.1924</a>
12	M24	50	32	14,7	5,1	65	59	22	18,8	150	1,5	3,5	3,2	2,8	22350.0637 / .0737	94	<a href="#">22350.1926</a>
16	M30 x 2	25	39	19,2	5,1	45	39	30	-	200	1,5	4,8	4,5	4,1	22350.0641 / .0741	163	<a href="#">22350.1930</a>

<sup>1)</sup> for a 5-fold safety against breakage

Dimensions		For nominal length l [mm]	Dimensions							Tightening torque max. [Nm]	x <sup>1)</sup> [mm]	Carrying force <sup>1)</sup> F <sub>1</sub> F <sub>2</sub> F <sub>3</sub> [kN]			For lifting pin [g]	Art. No.	
d <sub>1</sub> H11 [mm]	d <sub>2</sub> [mm]		d <sub>3</sub> -0,2	d <sub>4</sub> +0,3	d <sub>5</sub> +0,1	l <sub>1</sub>	l <sub>2</sub>	l <sub>3</sub>	l <sub>4</sub>								
16	M30	50	39	19,2	5,1	65	59	30	6,0	200	1,5	4,8	4,5	4,1	22350.0643 / .0743	163	22350.1934
16	M30	75	39	19,2	5,1	90	84	30	31,0	200	1,5	4,8	4,5	4,1	22350.0645 / .0745	163	22350.1936
20	M36 x 2	50	43	26,0	5,1	70	63	30	3,5	200	1,5	10,0	8,5	6,5	22350.0673 / .0773	340	22350.1954
20	M36 x 2	75	43	26,0	5,1	95	88	30	28,5	200	1,5	10,0	8,5	6,5	22350.0675 / .0775	340	22350.1956

<sup>1)</sup> for a 5-fold safety against breakage

### Accessories

	d <sub>1</sub> [mm]	[g]	Art. No.
<b>adjustable face spanner, offset</b>			
	8/10/12	121	22350.1990
	16/20/25	309	22350.1991
<b>face and socket wrench</b>			
	8	116	22350.1995
	10	136	22350.1996
	12	185	22350.1997
	16/20	243	22350.1998

### Application example

