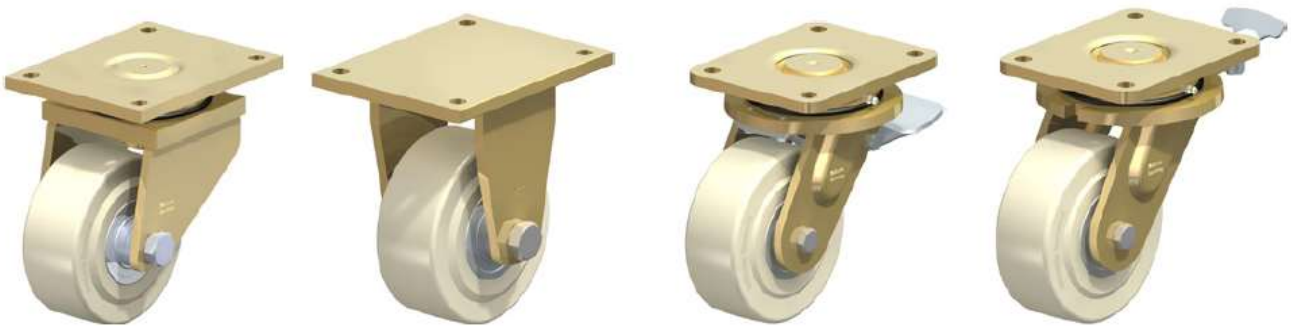


HIGH IMPACT NYLON WHEEL: SOLID NYLON TREAD AND CENTRE – Heavy Duty

- **Welded steel extra heavy duty castors, extra strong swivel head design, with heavy duty cast nylon wheel**
- **Brackets:** LS/BS series - Particularly rugged welded steel construction, swivel bracket with axial grooved ball bearing DIN 711 and tapered roller bearing DIN 720 in the swivel head, dust and splash-proof, fitted grease nipple, bolted and secured with a welded very strong central kingpin.
- Bolted wheel axle.
- Wheel Ø 100 - 300x80 mm: Zinc-plated, yellow-passivated, Cr6-free.
- Wheel Ø 300x110 - 400 mm: Lacquered, red.
- **Wheels:** GSPO series - Made of high-quality, impact resistant, hard and tough, highly compressed cast nylon, 80° shore D, natural beige.
- **Bearing type:** Two pressed-in ball bearings.



WHEELS

SWIVEL CASTORS	FIXED CASTORS	SWIVEL CASTORS WITH WHEEL BRAKE	SWIVEL CASTORS WITH 2 OR 4 WAY DIRECTIONAL LOCK	MAX LOAD (KG)	WHEEL DIAMETER x WIDTH (mm)	OVERALL HEIGHT (mm)	OFFSET SWIVEL CASTOR (mm)	PLATE SIZE (mm)	HOLE CENTRES & HOLE SIZE (mm)
LS-GSP0101K	BS-GSP0101K	LS-GSP0101K-ST		1500	100 x 55	145	50	140 x 110	105 x 75/80(11)
LS-GSP0125K	BS-GSP0125K	LS-GSP0125K-ST		1750	125 x 55	170	50	140 x 110	105 x 75/80(11)
LS-GSP0150K-35	BS-GSP0150K-35	LS-GSP0150K-35-ST	LS-GSP0150K-35-R12	2500	150 x 55	205	65	175 x 140	140 x 105(14)
LS-GSP0152K-35	BS-GSP0152K-35	LS-GSP0152K-35-ST	LS-GSP0152K-35-R12	3000	150 x 80	205	65	175 x 140	140 x 105(14)
LS-GSP0200K-35	BS-GSP0200K-35	LS-GSP0200K-35-ST	LS-GSP0200K-35-R12	3000	200 x 55	255	65	175 x 140	140 x 105(14)
LS-GSP0202K	BS-GSP0202K	LS-GSP0202K-RAH		4500	200 x 80	280	75	255 x 200	210 x 160(18)
LS-GSP0252K	BS-GSP0252K	LS-GSP0252K-RAH		6000	250 x 80	330	80	255 x 200	210 x 160(18)
LS-GSP0300K	BS-GSP0300K	LS-GSP0300K-RAH		6000	300 x 80	380	90	255 x 200	210 x 160(18)