

## Horizontal Hold Down Action Clamp H - 206 Series

### FEATURES:

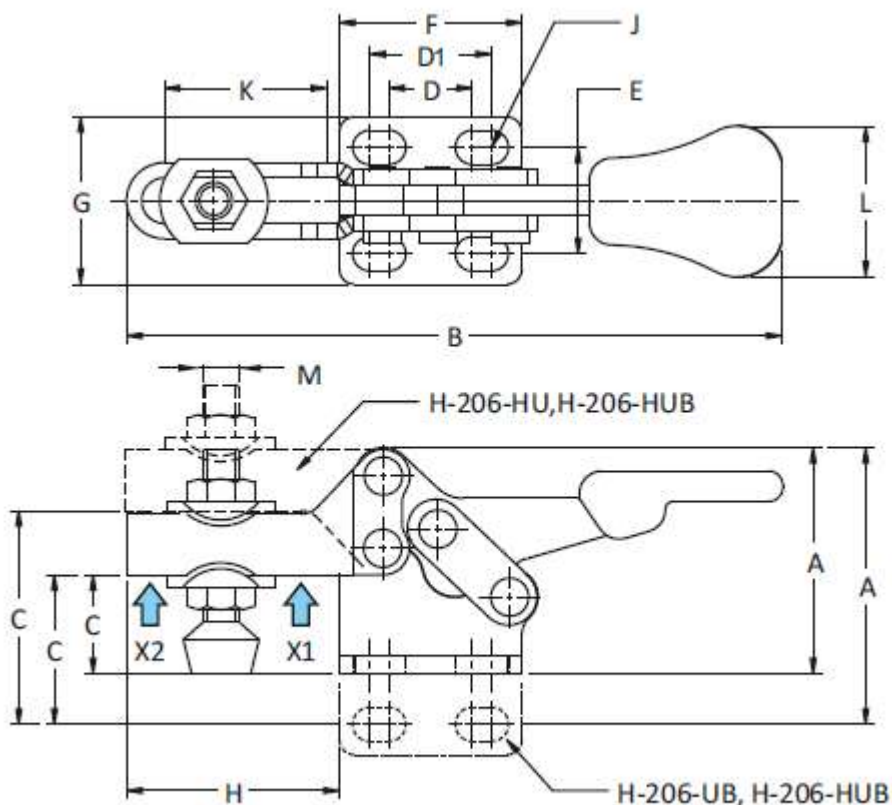
- Base: Flanged or straight
- Arm Type: Adjustable Arm or High Adjustable Arm
- Bar Opens: 90°
- Handle Opens: 90°



Model No. H-206-U



Model No. H-206-HU



Model No.	Arm Type	Base Type
H-206-U	Adjustable Arm	Flanged
H-206-UB	Adjustable Arm	Straight
H-206-HU	High Adjustable Arm	Flanged
H-206-HUB	High Adjustable Arm	Straight

Model No.	Holding Capacity		Weight Kgs	Handle Moves	Bar Opens	Dimensions												
	X2	X1				A	B	C	D	D1	E	F	G	H	J/Slot	K	L	M
H-206-U	0.20 kN	0.50 kN	0.040	90°	90°	29.0	86.0	12.5	11.1	15.8	15.9	24.2	24.3	29.0	4.3 x 6.8	12	20.0	M5 Bolt
H-206-UB	0.20 kN	0.50 kN	0.040	90°	90°	33.5	86.0	17.0	11.1	15.8	--	24.2	--	29.0	4.3 x 6.8	12	20.0	M5 Bolt
H-206-HU	0.20 kN	0.50 kN	0.040	90°	90°	29.0	86.0	20.5	11.1	15.8	15.9	24.2	24.3	29.0	4.3 x 6.8	12	20.0	M5 Bolt
H-206-HUB	0.20 kN	0.50 kN	0.040	90°	90°	33.5	86.0	24.9	11.1	15.8	--	24.2	--	29.0	4.3 x 6.8	12	20.0	M5 Bolt