

Vertical Hold Down Action Clamp VTC - 210 Series

FEATURES:

- Vertical Hold Down Action
- Arm: Adjustable Arm or Solid Arm
- Handle Moves: 58°
- Bar Opens: 106°
- Also Available in Stainless Steel



Model No. VTC-210-U

Also Available
in Stainless Steel
VTC-210-U-SS
VTC-210-UB-SS



Model No. VTC-210-UB

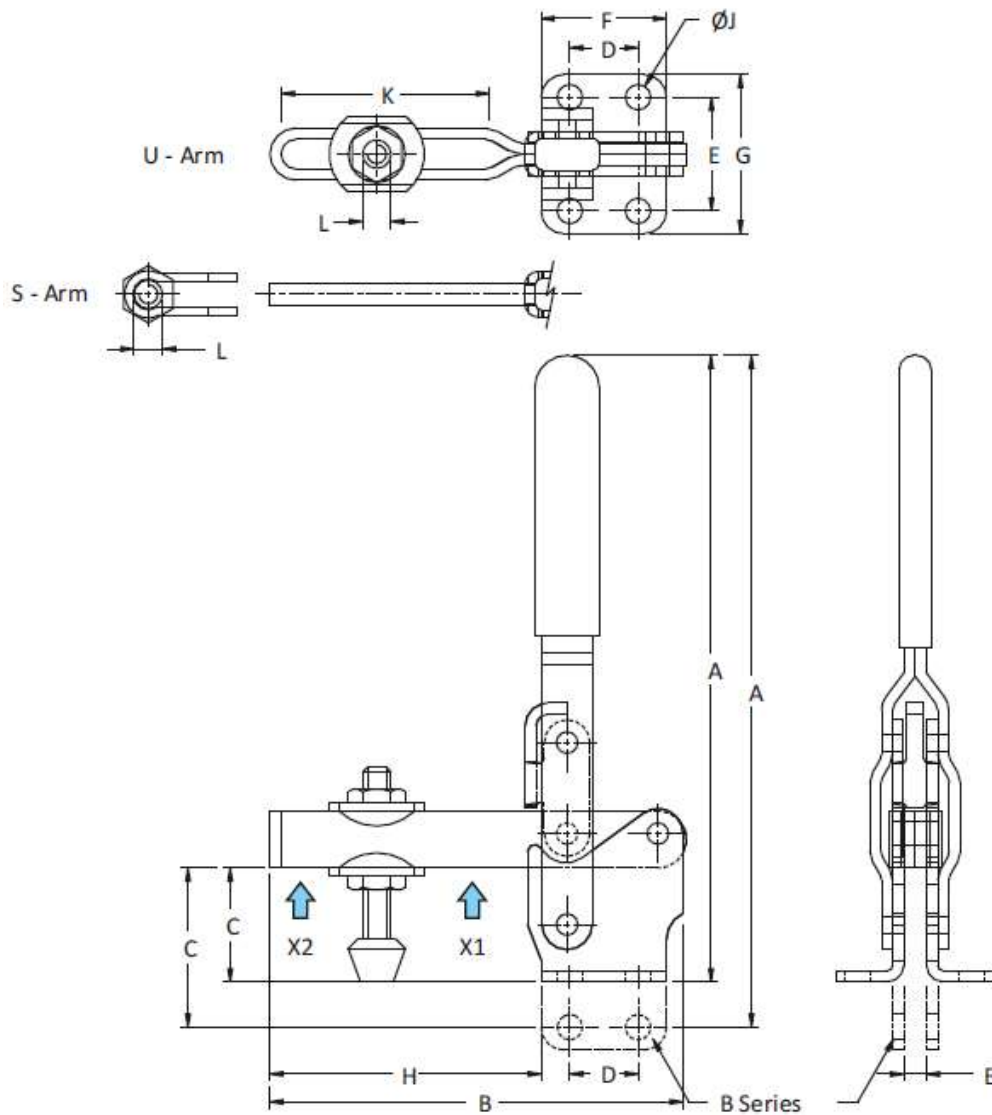
Model No.	Arm Type	Base Type
VTC-210-S	Solid Arm	Flanged
VTC-210-SB	Solid Arm	Straight
VTC-210-U	Adjustable Arm	Flanged
VTC-210-UB	Adjustable Arm	Straight



Model No. VTC-210-S



Concept Latch Lock & Hinge



Model No.	HoldingCapacity		Weight Kgs	Handle Moves	Bar Opens	Dimensions										
	X2	X1				A	B	C	D	E	F	G	H	J	K	L
VTC-210-S	2.20 kN	3.40 kN	0.590	58°	106°	195.0	144.0	42.0	31.8	45.2	48.6	64.4	91.0	8.3	-	M10 Bolt
VTC-210-SB	2.20 kN	3.40 kN	0.590	58°	106°	219.0	144.0	56.5	31.8	8.0	48.6	-	90.0	8.3	-	M10 Bolt
VTC-210-U	1.40 kN	2.70 kN	0.590	58°	106°	195.0	144.0	42.0	31.8	45.2	48.6	64.4	91.0	8.3	60.0	M10 Bolt
VTC-210-UB	1.40 kN	2.70 kN	0.590	58°	106°	219.0	144.0	56.5	31.8	8.0	48.6	-	90.0	8.3	60.0	M10 Bolt

www.conceptlatch.com.au
sales@conceptlatch.com.au
 03 9388 2551