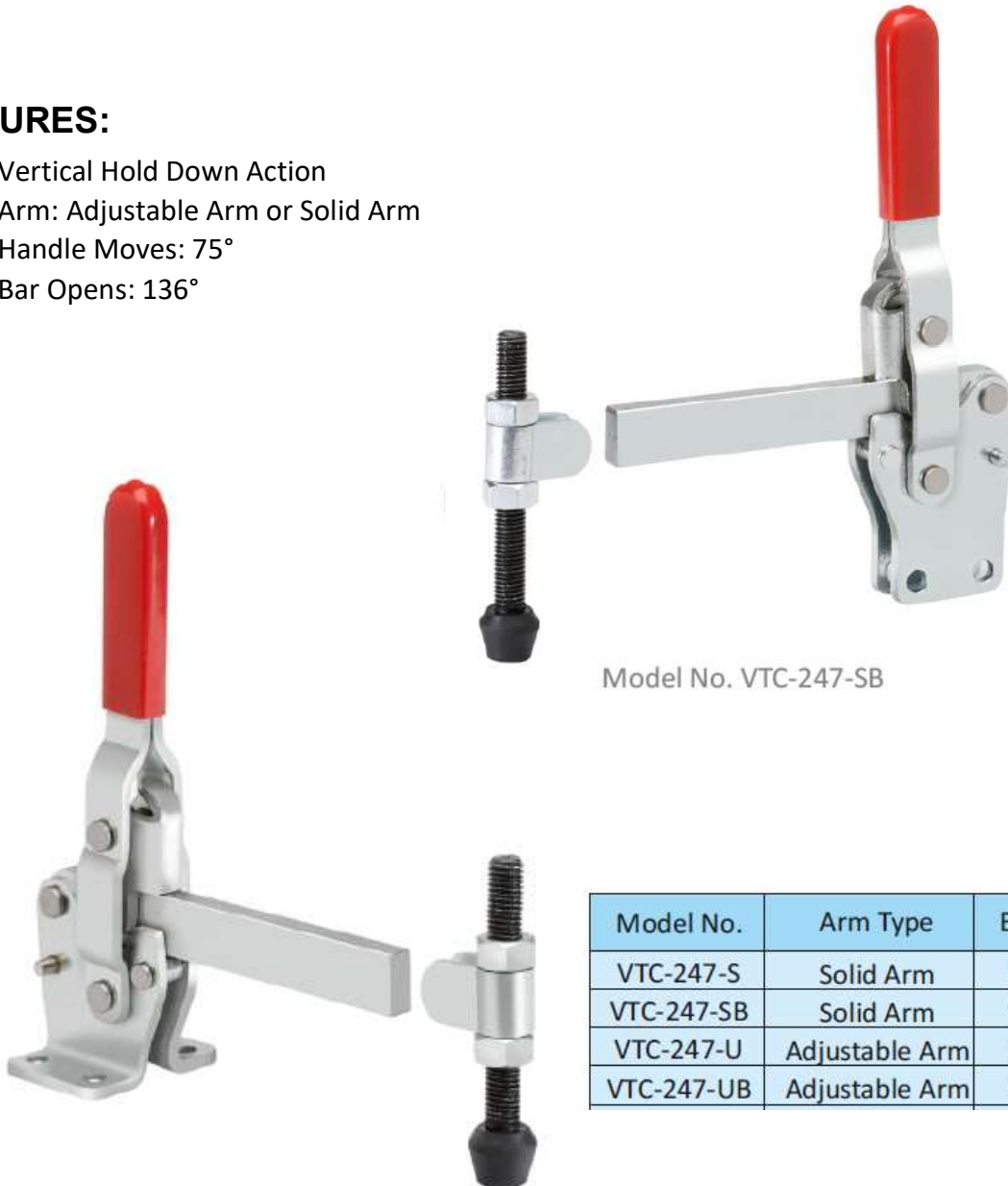


Vertical Hold Down Action Clamp VTC - 247 Series

FEATURES:

- Vertical Hold Down Action
- Arm: Adjustable Arm or Solid Arm
- Handle Moves: 75°
- Bar Opens: 136°



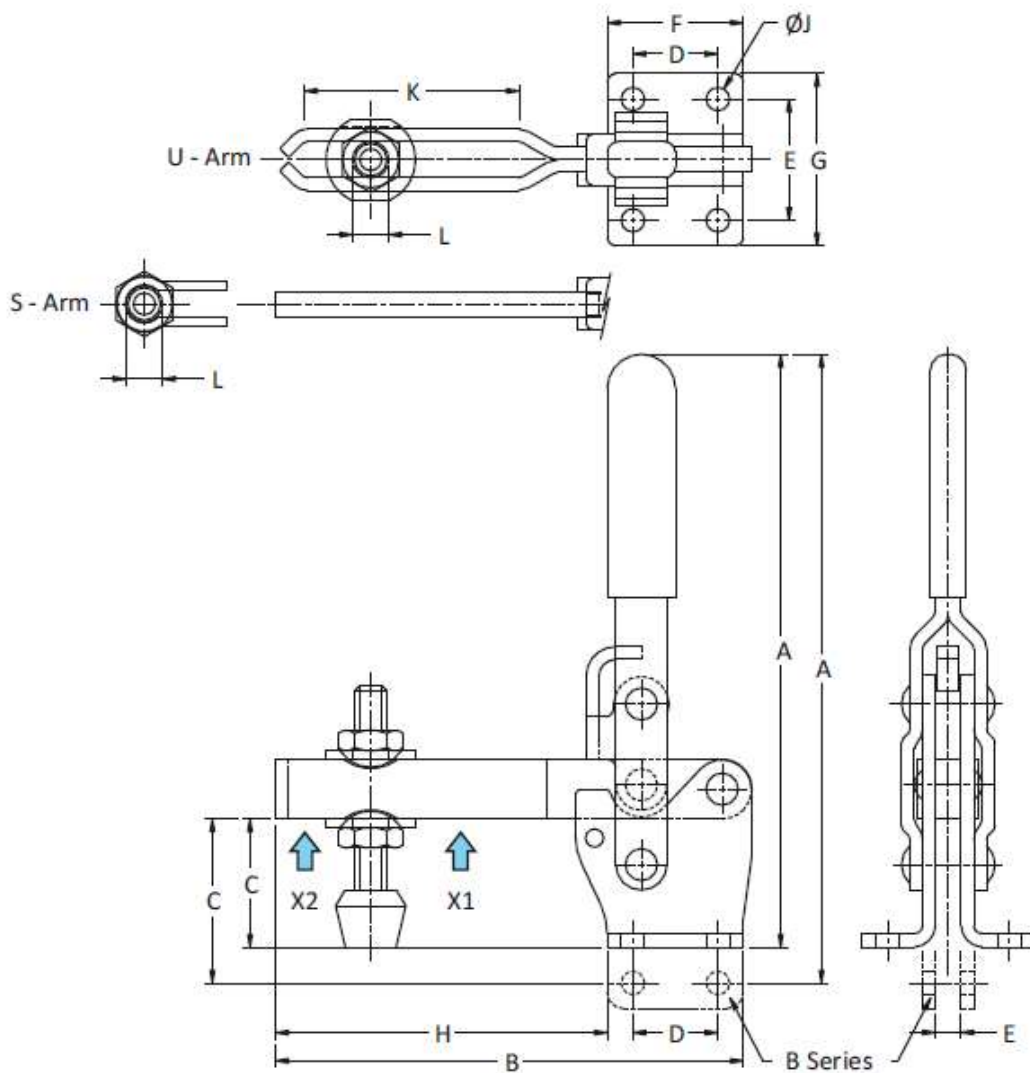
Model No. VTC-247-SB

Model No. VTC-247-S

Model No.	Arm Type	Base Type
VTC-247-S	Solid Arm	Flanged
VTC-247-SB	Solid Arm	Straight
VTC-247-U	Adjustable Arm	Flanged
VTC-247-UB	Adjustable Arm	Straight



Concept Latch Lock & Hinge



Model No.	Holding Capacity		Weight Kgs	Handle Moves	Bar Opens	Dimensions										
	X2	X1				A	B	C	D	E	F	G	H	J	K	L
VTC-247-S	2.20 kN	4.40 kN	1.000	75°	136°	220.0	177.0	50.8	31.8	45.0	50.8	64.3	124.0	8.6	-	M12 Bolt
VTC-247-SB	2.20 kN	4.40 kN	1.000	75°	136°	245.0	177.0	61.0	31.8	10.0	50.8	-	124.0	8.6	-	M12 Bolt
VTC-247-U	2.00 kN	4.40 kN	1.100	75°	136°	220.0	177.0	50.8	31.8	45.0	50.8	64.3	124.0	8.6	71.4	M12 Bolt
VTC-247-UB	2.00 kN	4.40 kN	1.100	75°	136°	245.0	177.0	61.0	31.8	10.0	50.8	-	124.0	8.6	71.4	M12 Bolt

www.conceptlatch.com.au
sales@conceptlatch.com.au
 03 9388 2551



**Concept
Latch Lock & Hinge**

www.conceptlatch.com.au
sales@conceptlatch.com.au
03 9388 2551