

Vertical Hold Down Action Clamp U Bar VTC - 201 Series

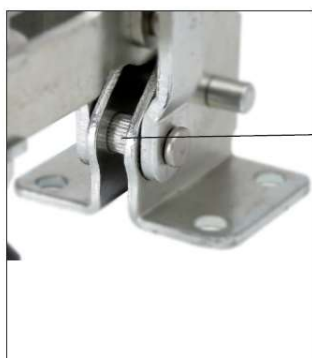
FEATURES:

- Vertical Hold Down Action
- Arm: Adjustable Arm
- Base: Flanged Model No. VTC-201-U
- Base: Straight Model No. VTC-201-UB
- Weight: 0.090 Kgs.
- Handle Moves: 60°
- Bar Opens: 110°
- Holding Capacity: X1: 0.50 kN X2: 0.24 kN
- Also Available in Stainless Steel:
VTC-201-U-SS or VTC-201-UB-SS



Hardened Bushes

Hardened Bushes increase the life of the clamp, thereby multiplying the productivity.



Hardened Bushes

'Safety Cover' on the clamp link

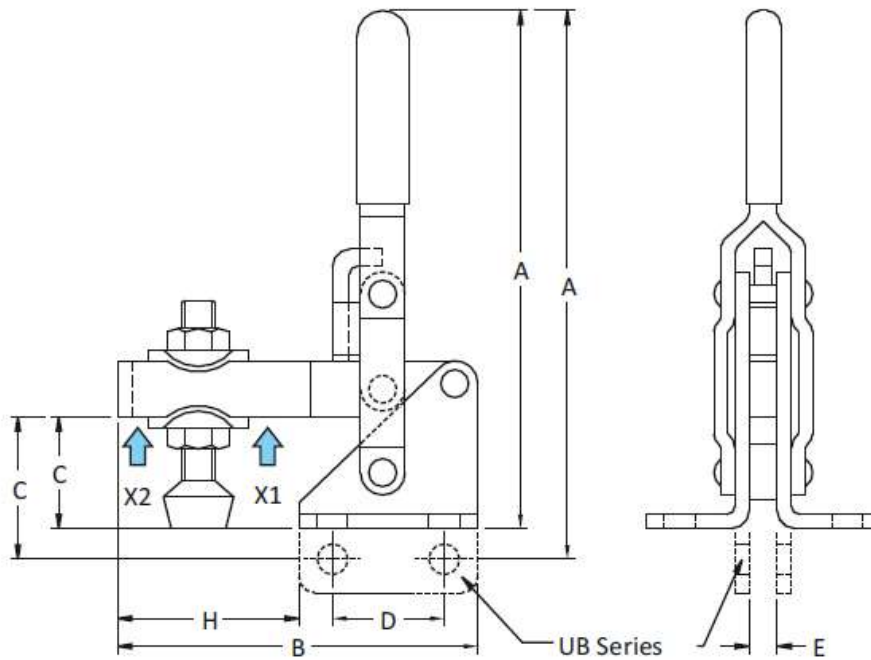
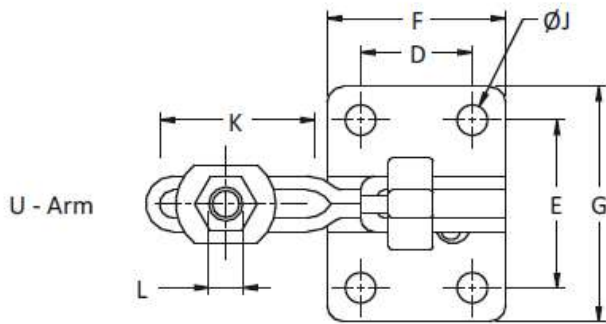


This feature protects the user's finger from accidentally entering the clamp linking and getting injured during clamping operations.

www.conceptlatch.com.au

sales@conceptlatch.com.au

03 9388 2551



Model No.	Holding Capacity		Weight Kgs	Handle Moves	Bar Opens	Dimensions										
	X2	X1				A	B	C	D	E	F	G	H	J	K	L
VTC-201-U	0.24 kN	0.50 kN	0.090	60°	110°	83.3	50.7	16.0	16.0	23.9	25.0	33.0	25.5	4.4	18.3	M5 Bolt
VTC-201-UB	0.24 kN	0.50 kN	0.090	60°	110°	91.0	50.7	21.5	16.0	4.0	25.0	—	25.5	4.4	18.3	M5 Bolt