

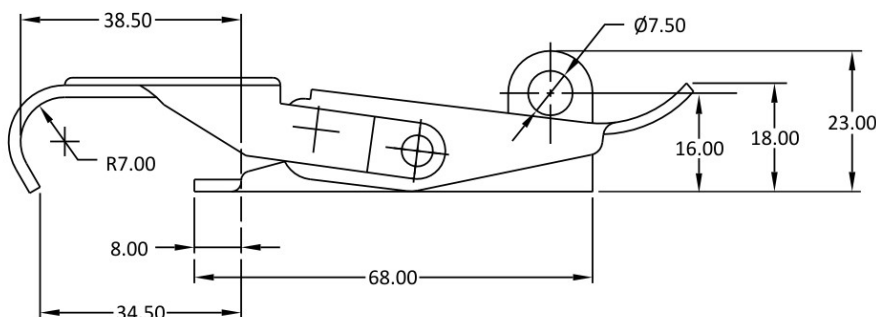
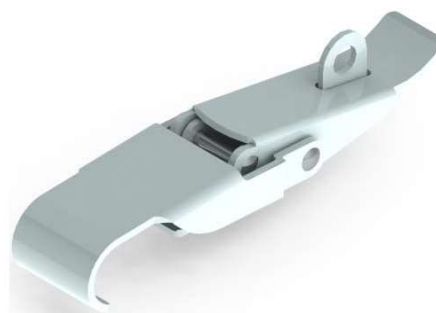
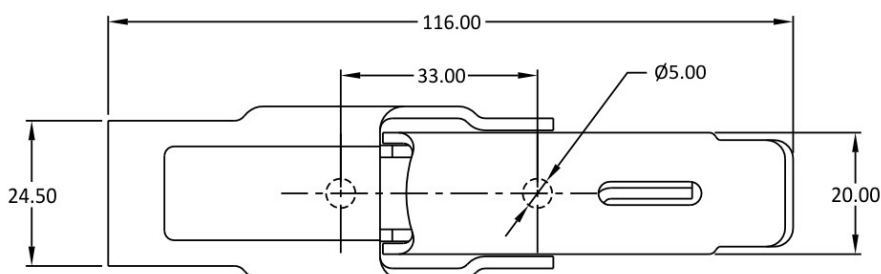
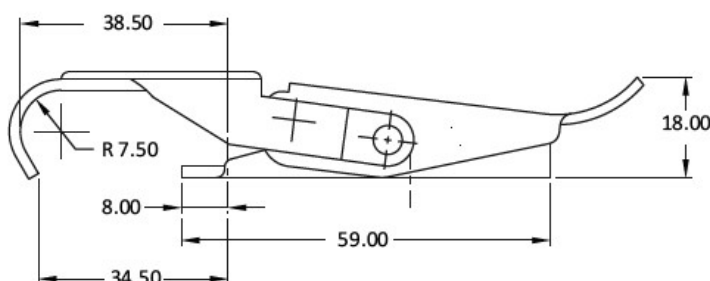
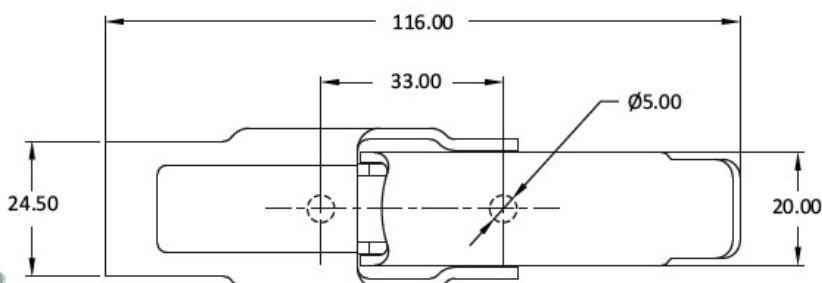
## Steel-Smith Latch Clamps – PAH-40 & 50 Series – Hook Latch

**Model No: PAH-40-502**

Holding Capacity: 2.40 kN

Weight: 0.100 kgs

In Stainless Steel: PAH-40-502-SS



**Model No: PAH-40-570**

Holding Capacity:

2.40 kN

Weight: 0.110 kgs

In Stainless Steel:

PAH-40-570-SS

[www.conceptlatch.com.au](http://www.conceptlatch.com.au)

[sales@conceptlatch.com.au](mailto:sales@conceptlatch.com.au)

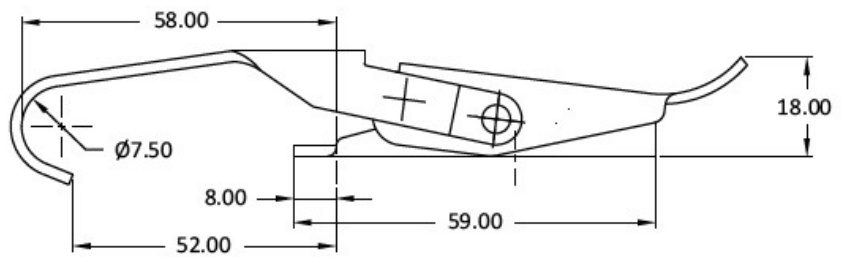
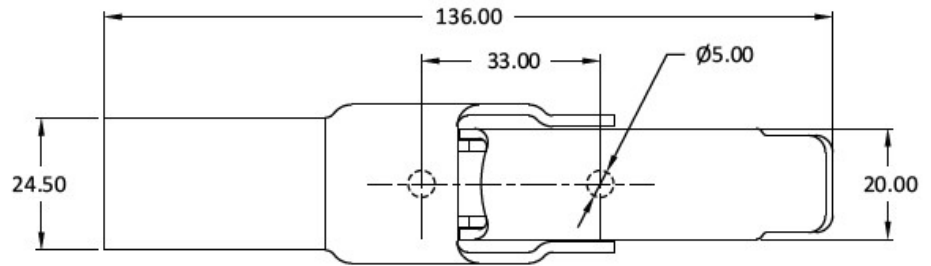
03 9388 2551

**Model No: PAH-50-502**

Holding Capacity: 2.40 kN

Weight: 0.120 kgs

In Stainless Steel: PAH-50-502-SS



**Model No: PAH-50-570**

Holding Capacity: 2.40 kN

Weight: 0.125 kgs

In Stainless Steel: PAH-50-570-SS

