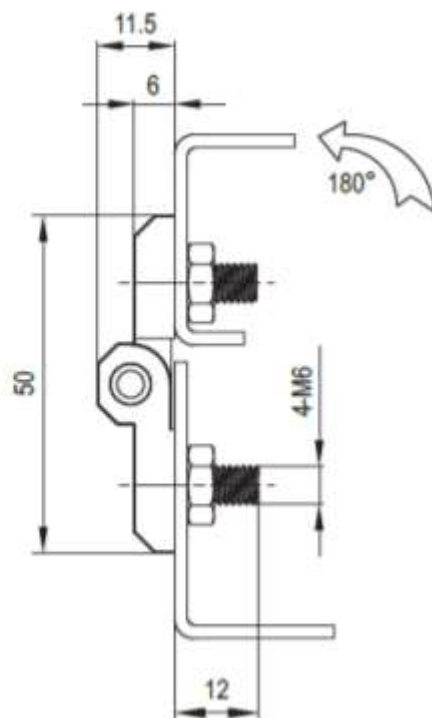
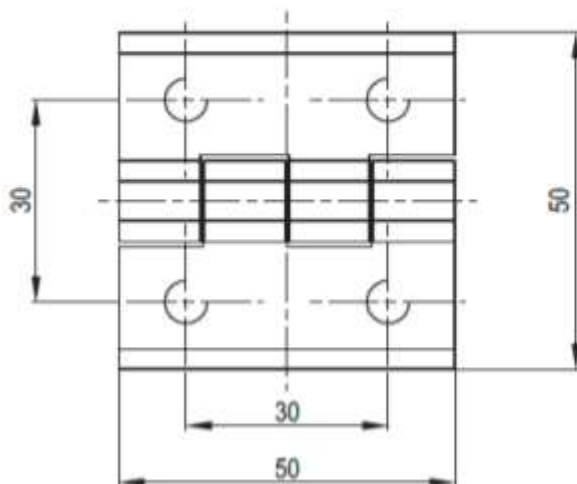


Diecast Stud Mounted Hinge 2101-501

- Zinc diecast, black powder coated
- 180 degree opening angle
- Size 50 x 50mm, 6mm thick
- M6 threaded studs
- Also in chrome 2101-501-30 & stainless steel 2101-501-316



M6 镶嵌螺柱 With Threaded Studs M6



All measurements are in mm