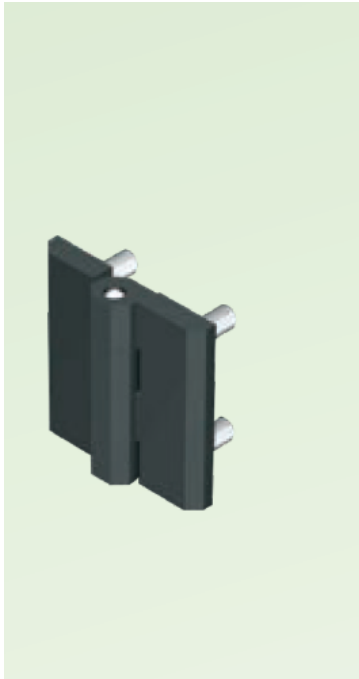


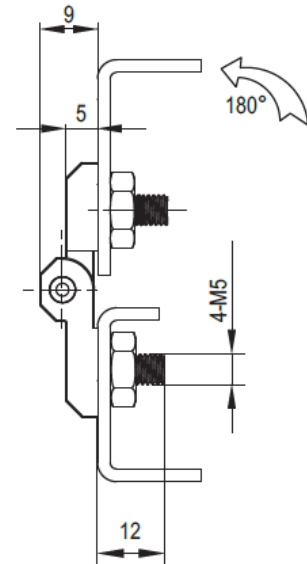
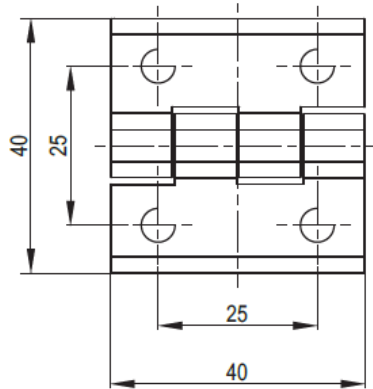


Concept
Latch Lock & Hinge

2101-401



M5 镶嵌螺柱 With Threaded Studs M5



锌合金, 镀锌钢或不锈钢销轴和螺柱, 表面处理可做喷塑黑和电镀亮铬

Zinc die, m.s. zinc plated or SUS pin and threaded studs, black powder coated or bright chrome