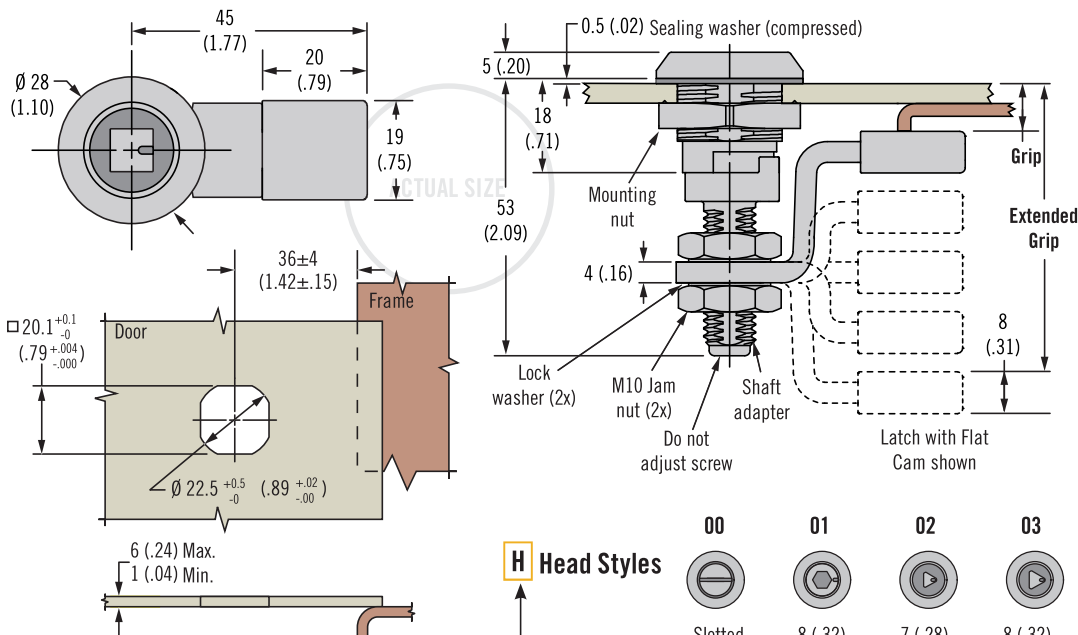




# E5 Cam Latch

Zinc · Tool operated · Adjustable grip



Latch Part Number (no cam)

**E5 - 6 - H F - 0U1**

- F** Finish
- 2 Bright chrome
  - 5 Black powder coated

### H Head Styles

<b>00</b>	<b>01</b>	<b>02</b>	<b>03</b>
Slotted	8 (.32) Hex recess	7 (.28) Triangle	8 (.32) Triangle
<b>04</b>	<b>05</b>	<b>06</b>	<b>07</b>
7 (.28) Square	8 (.32) Square	3 (.11) Double bit5	5 (.19) Double bit
<b>08</b>	<b>13</b>	<b>19</b>	<b>21</b>
8 (.32) Square recess	Bellcore 216	Bellcore electronics	Recessed slot (tamper resistant)
	<b>22</b>		
	Railway standard		

- Single hole install
- Latched / unlatched indicator
- Easy grip adjustment
- Tool operated for security

### Material and Finish

Zinc alloy, powder coated or chrome plated and steel, zinc plated

### Performance Details

Maximum static load: 330 N (74 lbf)

### Installation Notes

Position cam so latching function can be achieved comfortably by hand. Recommended tightening torque for mounting nut is 10 N·m (88 in·lbf) max, and jam nut is 7 N·m (62 in·lbf)

### Sealing Notes

NEMA 4 / IP65 achieved using gasket supplied

### Keys and Accessories

See page 130

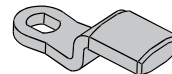
### Part Number Selection

See table

Order latch and cam separately

Flat Cam Part Number Table (order separately from latch)

Minimum Grip +2(.08) - 0	Maximum Grip +2(.08) - 0	Offset	Cam Type	Part Number
5 (.20)	16.5 (.65)	Deep Cam	Forward	E5-4001
51 (2.01)	62.5 (2.46)	Deep Cam	Reversed	
16.5 (.65)	28 (1.10)	Cam	Forward	E5-4002
39.5 (1.56)	51 (2.01)	Cam	Reversed	
28 (1.10)	39.5 (1.56)	-	Straight Cam	E5-4003

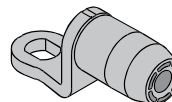


### Flat Cam

- Stable frame engagement
- Improved surface contact
- Minimal frame surface prep

Roller Cam Part Number Table (order separately from latch)

Minimum Grip +2(.08) - 0	Maximum Grip +2(.08) - 0	Offset	Cam Type	Part Number
0 (0)	5 (.20)	Extra Deep Cam	Forward	E5-4505
54 (2.13)	62.5 (2.46)	Extra Deep Cam	Reversed	
0 (0)	8 (.31)	Deep Cam	Forward	E5-4506
45 (1.89)	58 (2.28)	Deep Cam	Reversed	
8 (0.31)	18 (.71)	Medium Cam	Forward	E5-4507
38 (1.50)	48 (1.89)	Medium Cam	Reversed	
18 (0.17)	28 (1.10)	Low Cam	Forward	E5-4508
28 (1.10)	38 (1.50)	Low Cam	Reversed	



### Roller Cam

- Reduce operating effort
- Minimize scratching frame finish
- Detented feel (with optional Keeper)

Dimensions in millimeters (inch) unless otherwise stated

