



# E5 Cam Latch Accessories

## Keys and Flush Mount Bracket

### Material and Finish

Tool key: Zinc alloy or nylon  
 Overmolded key: Nickel plated and ABS plastic black  
 Flat key: Nickel plated

### Overmolded Keys



### Flat Keys

Key CH751



### Part Number

Overmolded key CH751:  
 Single: PK-10-10-05  
 Pair: PK-10-01-05  
 Overmolded key R001:  
 Single: PK-10-10-05-KR001  
 Pair: PK-10-01-05-KR001  
 Flat key  
 Pair: PK-10-01

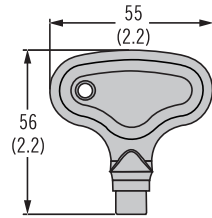
### Material and Finish

Stainless steel or galvanized steel with rubber o-ring

### Notes

For use with tool operated standard series cam latches, see pages 118-119, 121, 127  
 See page 91 for door preparation dimensions

### Keys Zinc or Nylon



**E3 - H - F**

### F Finish

- 1 Plated zinc
- 2 Natural zinc
- 3 Nylon, black

### H Head style

- |    |                       |    |                      |
|----|-----------------------|----|----------------------|
| 2  | 3 (.11) Double bit    | 3  | 7 (.28) Triangle     |
| 4  | 7 (.28) Square        | 7  | 8 (.32) Triangle     |
| 8  | 8 (.32) Square recess | 9  | 5 (.19) Double bit   |
| 10 | 8 (.32) Square male   | 11 | Bellcore electronics |
| 12 | Bellcore 216          |    |                      |

### Flush Cup

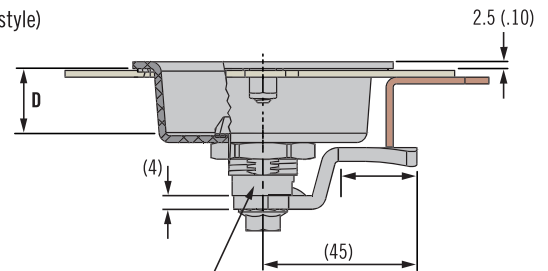
### D Depth

- 1 19mm (for wingknob head style)
- 2 4mm (for tool head style)

**E5 - 2 M - 60 D - 5**

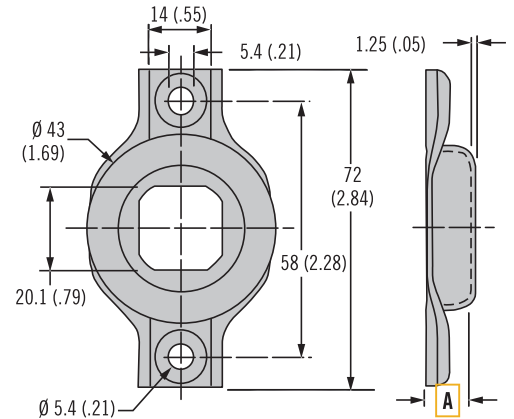
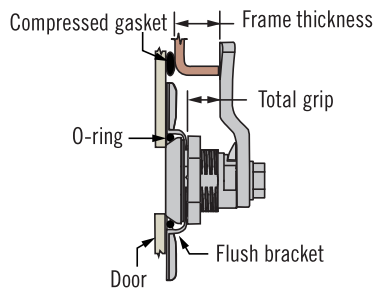
### M Mounting Style

- 0 M5 Studs
- 1 Through hole



To calculate total grip, add cup depth (D) to latch grip

### Flush Mount Bracket



| A   | Part Number | Material            |
|-----|-------------|---------------------|
| 6.6 | E5-77-1-12  | Galvanized steel    |
| 6.6 | E5-77-1-24  | 304 Stainless steel |

To calculate the **Total Grip**, use the following formula: **Frame Thickness + Compressed Gasket - A**.  
 Use this **Total Grip** with the appropriate E5 tables in the **SOUTHCO® Handbook** to determine cam type.

Dimensions in millimeters (inch) unless otherwise stated