



# E5 Cam Latch

Zinc · Tool operated · Short Housing · Fixed grip

- Single hole install
- Latched / unlatched indicator
- EN 45545-3 E10 Compliant

### Material and Finish

Zinc alloy, powder coated or chrome plated and steel, zinc plated

### Performance Details

Maximum static load: 330 N (74 lbf)

### Installation Notes

Mounting nut:

Maximum tightening torque:  
10 N·m (88 in·lbf)

Screw Maximum tightening torque:  
5 N·m (45 in·lbf)

### Sealing Notes

NEMA 4 / IP65 achieved using gasket supplied

### Keys and Accessories

See page 120 and 169-175

### Notes

Suitable for push-to-close action see page 166

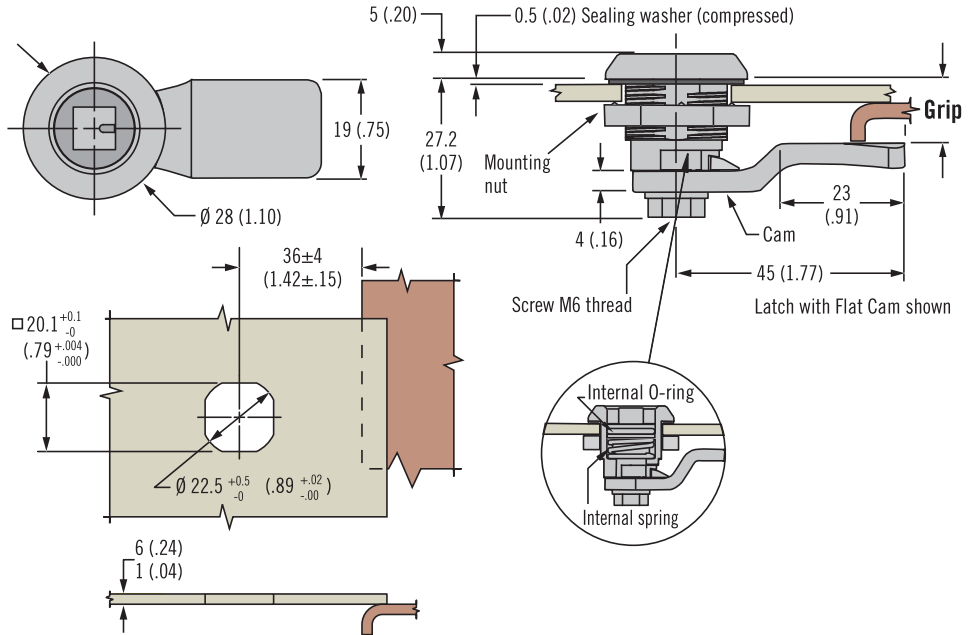
### Part Number Selection

See table

Order latch and cam separately

### Optional Keeper for Roller Cam

Part number E5-74-601-33



**Latch Part Number (no cam)**

**E5 - 6 - H F - UU1**

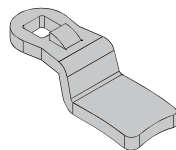
**H Head Styles**

00 Slotted	01 8 (.32) Hex recess	02 7 (.28) Triangle	03 8 (.32) Triangle
04 7 (.28) Square	05 8 (.32) Square	06 3 (.11) Double bit	07 5 (.19) Double bit
08 8 (.32) Square recess	13 Bellcore 216	19 Bellcore electronics	21 Recessed slot (tamper resistant)
	22 Railway standard	23 Blank	

**F Finish**

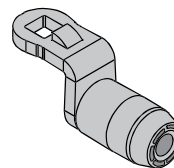
- 2 Bright chrome
- 5 Black powder coated

Cam Options - See Page 170 Short Housing Table



### Standard Cam

- Stable frame engagement
- Improved surface contact
- Minimal frame surface prep



### Roller Cam

- Reduce operating effort
- Minimize scratching frame finish
- Detented feel (with optional Keeper)