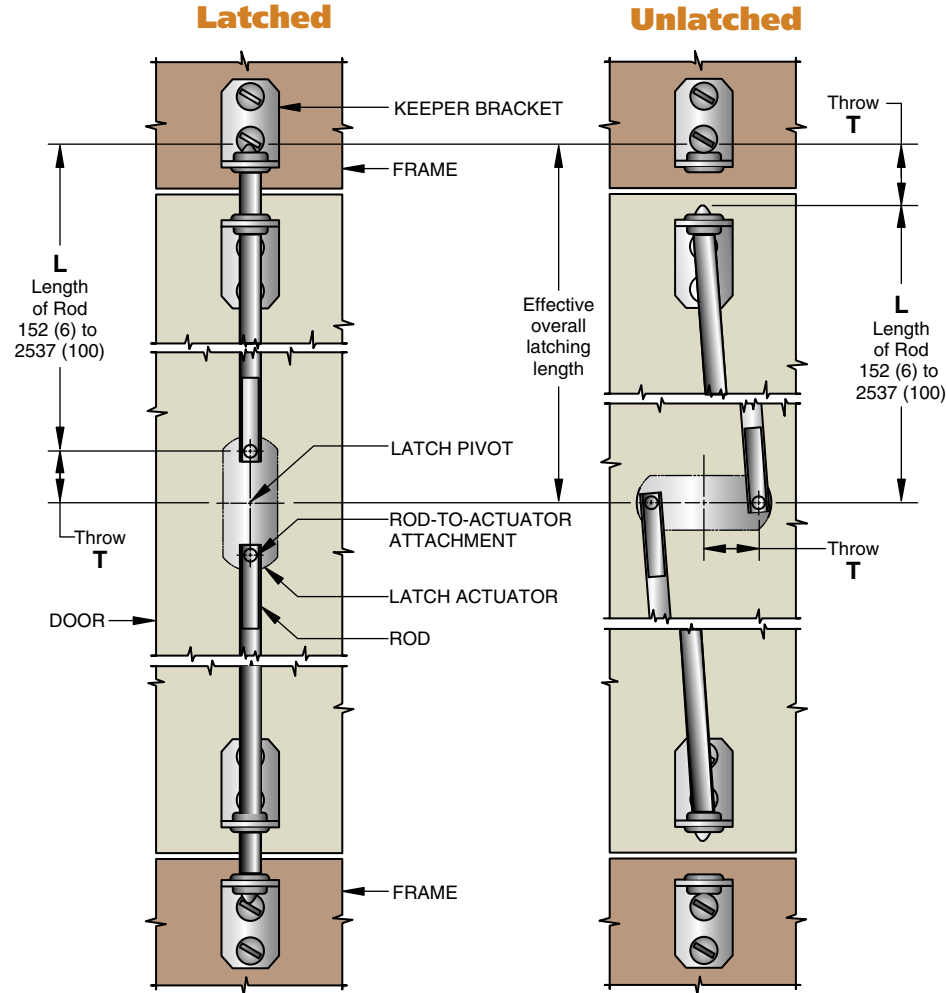


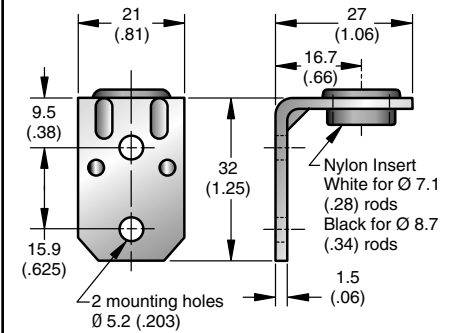
Southco® Multi-point Latching Systems

Fixed-rod Latching System

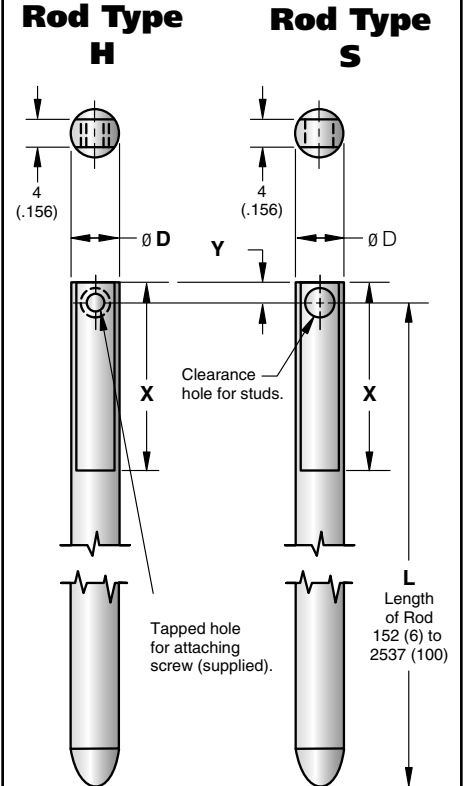
- For 2- and 3-point latching
- Assemblies include rods and guides
- Operates with multiple Southco® latch families



Guide and keeper bracket detail



Rod detail



BASIC PART NUMBER	ROD ASSEMBLY TYPE	Ø D	HOLE SIZE	X	Y
A5-21-XXX-10	S	7.1 (.28)	Ø 4.2 (.166) clear.	30 (1.19)	3.2 (.13)
A5-22-XXX-10	H		Tapped No. 8-32		
A5-31-XXX-10	S	8.7 (.34)	Ø 5 (.196) clear.	44.5 (1.75)	4.7 (.19)
A5-32-XXX-10	H		Tapped No. 8-32		

STANDARD ROD LENGTHS	
PART NUMBER XXX	L
120	305 (12.0)
240	610 (24.0)
360	914 (36.0)
480	1219 (48.0)

millimeter (inch)
millimeter (inch)

Dimensions without tolerances are for reference only.

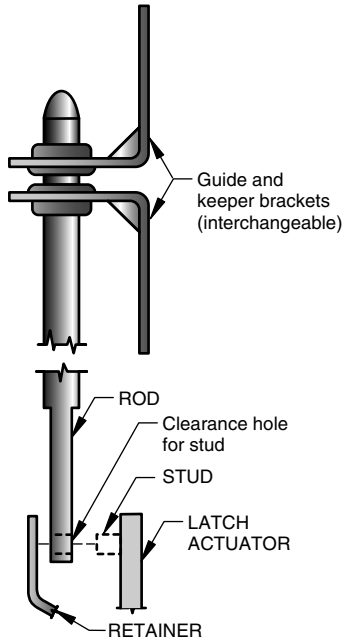
Multi-point Latching System

Southco® Multi-point Latching Systems

Fixed-rod Latching System

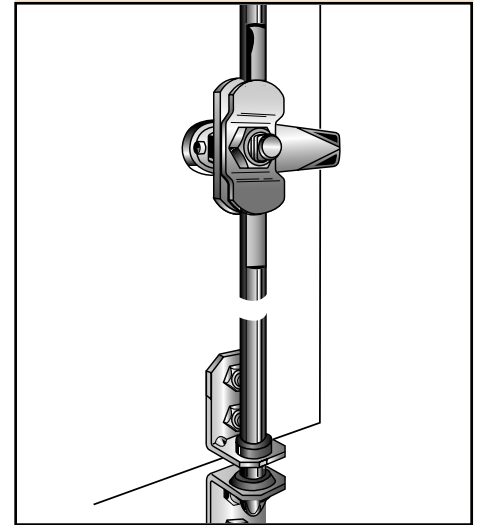
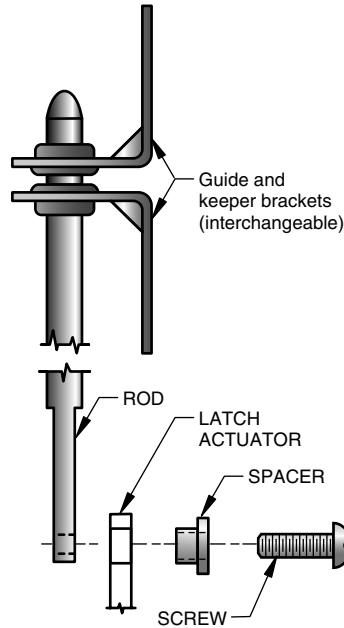
Rod Type S

To attach rod to latch actuators having integral studs and rod retainer.



Rod Type H

To attach rod to latch actuators having Ø 6.4 (.250) holes.



Material and Finish

RODS: Aluminum, natural.

BRACKETS: 1010 Steel, zinc plate, chromate plus sealer.






BRACKET INSERTS: Nylon, white or black.

FOR TYPE H ONLY, SPACERS: 12L14 Steel, zinc plate, chromate plus sealer.

SCREWS: Low carbon steel, zinc plated with bright chromate dip.

To order rod assemblies, (assembly consists of a guide, keeper and rod):

1. Determine basic part number from table below.

OPERATING LATCH FAMILIES	SIZE/STYLE	BASIC PART NUMBER	ROD TYPE	T
No. 01 Flush Cup Latches 	Small	A5-21-XXX-10	S	12.7 (.50)
	Mid-size	A5-31-XXX-10		19 (.75)
No. 24 Flush Cup Latches 	2 and 3 point assemblies (non-locking)	A5-32-XXX-10	H	17.5 (.69)
	Heavy Duty			31.8 (1.25)
	Large			22.2 (.88)
No. 62 Lift and Turn Latches 	Large (Flush)	A5-32-XXX-10	H	31.8 (1.25)
	Mid-size T-handle			17.5 (.69)
	Small T-handle			13.5 (.53)
	Large T-handle. Bail Handle (Series 80)			22.2 (.88)
No. 68 Bail and T-handle Latches 		A5-22-XXX-10		
No. 92 L-handle and T-handle Latches 		A5-32-XXX-10		
	ALL	A5-21-XXX-10	S	19 (.75)

2. Effective overall latching lengths = L length + T. L length rod 152 (6) to 2537 (99.9) MAX. must clear frame in unlatched position.

3. Select XXX part number based on length required. See Standard Rod Lengths Table for stocked lengths. Custom lengths are available contact Southco for details.

4. Order 1 latch with actuator option (as appropriate), 2 Rod Assemblies for a complete system. See appropriate page for latch part number.

Product Strength Guidelines

(To assist in your product selection; samples are available for your evaluation.)

Flammability Rating: UL94 - V2

millimeter (inch)
millimeter
(inch)

Dimensions without tolerances are for reference only.

Multi-point Latching System