

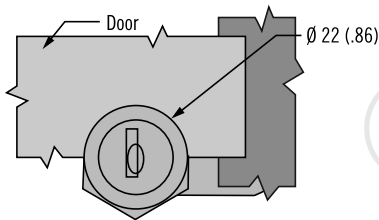
CM Cam Locks

Fixed core



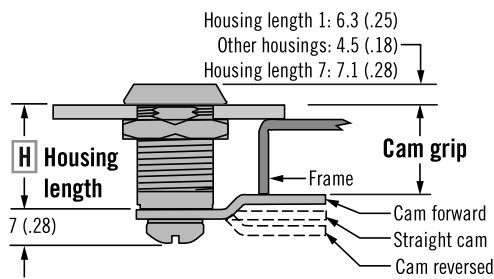
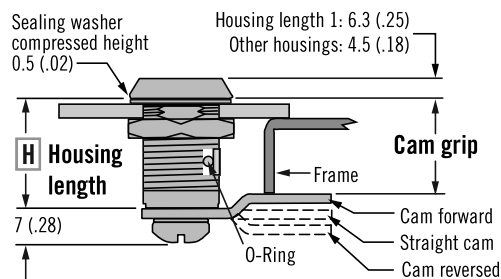
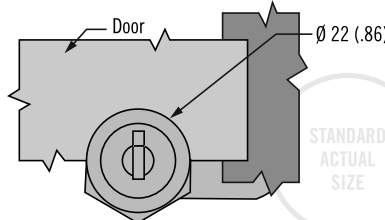
Sealed Disc Tumbler

Pictured with Lockcore Installed



Non-Sealed Disc Tumbler

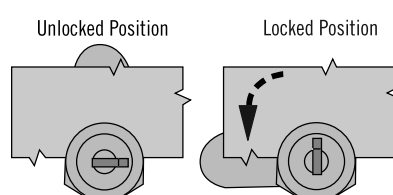
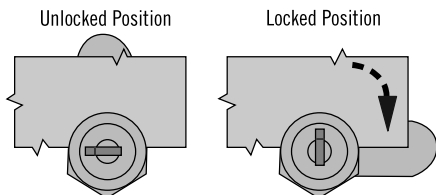
Pictured with Lockcore Installed



Cam Rotation

R 01 (Clockwise to Lock)

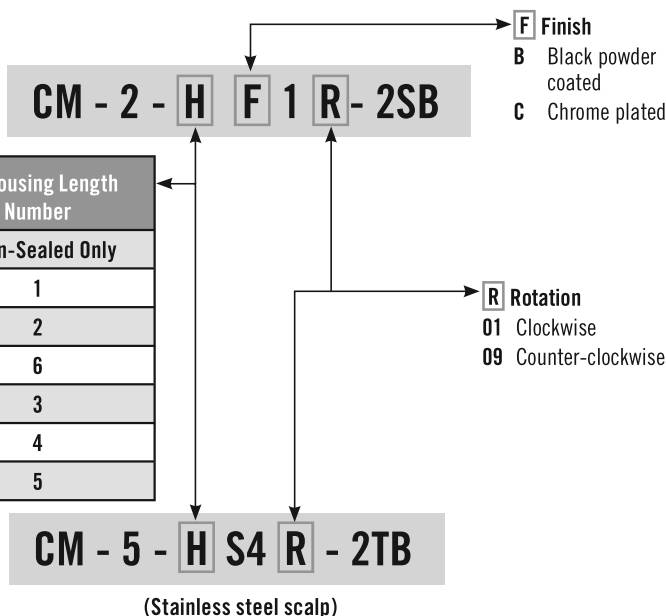
R 09 (Counter-Clockwise to Lock)



Sealed Version

| Max. Door Thickness | Housing Length | H Housing Length Number |
|---------------------|----------------|--------------------------|
| 2.4 (.09) | 11 (.438) | 7 Non-Sealed Only |
| 7.1 (.28) | 16 (.625) | 1 |
| 13.5 (.53) | 22 (.875) | 2 |
| 19.8 (.78) | 28.5 (1.125) | 6 |
| 26.2 (1.03) | 35 (1.375) | 3 |
| 32.5 (1.28) | 41 (1.625) | 4 |
| 38.9 (1.53) | 48 (1.875) | 5 |

Non-sealed version



Dimensions in millimeters (inch) unless otherwise stated

- Stainless steel scalp on housing and lock core on non-shuttered style
- Sealed version meets NEMA 4 and IP65 water intrusion standards
- Cams sold separately

Material and Finish

Housing: Zinc alloy, chrome plated or black powder coated
 Scalp: stainless steel

Performance Details

Average ultimate load on cam:
 180 N (40 lbf)

Installation Notes

See page 167

Accessories

See pages 169

Notes

Lock: Key code CH751, keyed alike, key removal in locked and unlocked positions (two keys supplied)

Part Number Selection

See table

Lock part number (no cam)

Order lock and cam separately

Cam page 167

To select cam part number see grip table page 163

Notes

CM-2-1 version is sealed but does not meet the NEMA 4 / IP65 standards

Other options available. For complete details on variety, part numbers, installation and specification, go to



www.southco.com/CM