



CM Cam Locks

Removable core

- Ideal for applications requiring multiple key codes or tool actuated options
- Sealed version meets NEMA 4 and IP65 water intrusion standards
- Lock cores and cams sold separately
- Master and non-master key codes available

Material and Finish

Housing: Zinc alloy, chrome plated or black powder coated
 Scalp: stainless steel

Performance Details

Average ultimate load on cam:
 180 N (40 lbf)

Installation Notes

See page 167

Accessories

See page 169

Part Number Selection

See table

Housing part number
 (no lock core or cam)

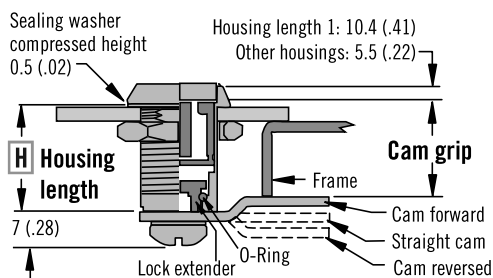
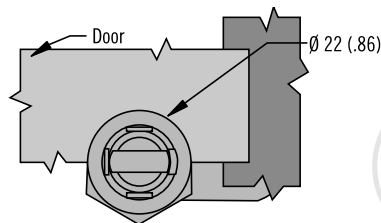
Order housing, lock core and cam
 separately

Lock core part numbers and
 installation see page 159

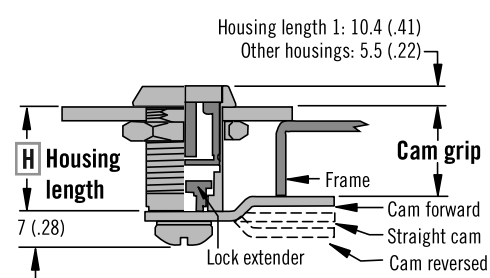
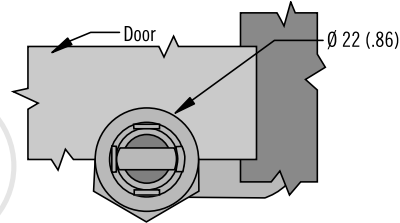
Cam page 167

To select cam part number see grip
 table page 163

Sealed Disc Tumbler

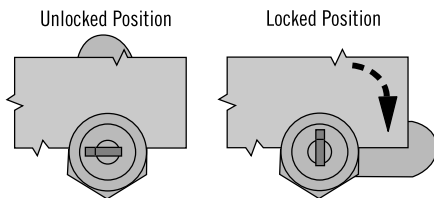


Non-Sealed Disc Tumbler

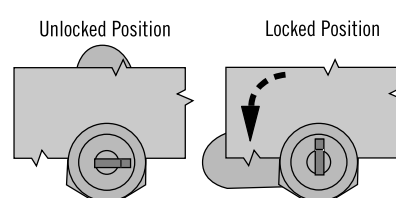


Cam Rotation

R 01 (Clockwise to Lock)

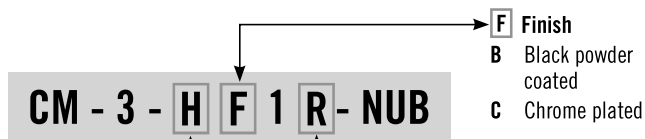


R 09 (Counter-Clockwise to Lock)



Sealed Version

Max. Door Thickness	Housing Length	H Housing Length Number
7.1 (.28)	16 (.625)	1
13.5 (.53)	22 (.875)	2
19.8 (.78)	28.5 (1.125)	6
26.2 (1.03)	35 (1.375)	3
32.5 (1.28)	41 (1.625)	4
38.9 (1.53)	48 (1.875)	5



Non-sealed version



Dimensions in millimeters (inch) unless otherwise stated

Other options available. For complete details on variety, part numbers, installation and specification, go to

INFO CLIC www.southco.com/CM