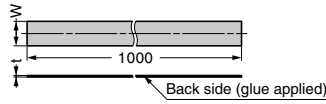


MAGNETIC RUBBER SHEET **KMS** Strong Force Type



RoHS	CAD	Item Code	Item Name	Material	W	t	Magnetic Force N/cm ²	Magnetic Force gf/cm ²	Weight (g)	Box (pcs)	Carton (pcs)
RoHS	3D	140-059-474	KMS-1-1000	Ferrite/ CPE	12.7	0.8	0.588	60	42	100	-
RoHS	3D	140-059-475	KMS-2-1000		19.1				62	100	-
RoHS	3D	140-059-476	KMS-3-1000		25.4				83	100	-
RoHS	3D	140-059-453	KMS-4-1000		12.7	1.5	0.931	95	73	100	-
RoHS	3D	140-059-492	KMS-5-1000		19.1				110	100	-
RoHS	3D	140-059-493	KMS-6-1000		25.4				146	100	-

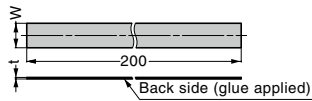
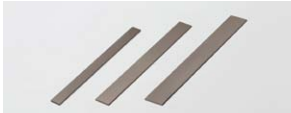
Refer to 1 : P.607

- Easy to cut.
- Easy to apply with glue.

[Remarks]

- Be sure to read the "Cautions" 1.
- Don't use outside.
- Do not use in contact with steam, hot water and water. The cut surface may rust.
- Do not use for installing fragile or heavy items vertically.

MAGNETIC RUBBER SHEET **NMS** Extra Strong Force Type



RoHS	CAD	Item Code	Item Name	Material	W	t	Magnetic Force N/cm ²	Magnetic Force kgf/cm ²	Weight (g)	Box (pcs)	Carton (pcs)
RoHS	-	140-021-209	NMS-1-200	Neodymium	12.7	0.8	3.8	0.39	10	100	-
RoHS	-	140-021-210	NMS-2-200		19.1				16	100	-
RoHS	-	140-021-211	NMS-3-200	Nitrile	25.4	1.5	5.4	0.55	21	100	-
RoHS	-	140-021-212	NMS-4-200	Rubber (NBR)	12.7				19	100	-
RoHS	-	140-021-213	NMS-5-200	19.1	30				100	-	
RoHS	-	140-021-214	NMS-6-200	25.4	39				100	-	

Refer to 1 : P.638, 2 : P.607

- Easy to cut.
- Easy to apply with glue.
- Ultra thin but strong magnetic force by using neodymium magnet.
- Weaker magnetic type (KMS 1) available.

[Remarks]

- Be sure to read the "Cautions" 2.
- Don't use outside.
- Do not use in contact with steam, hot water and water. The cut surface may rust.
- Max. temperature: 80°C
- Do not use for installing fragile or heavy items vertically.

SEALED COUNTER PLATE **MC-JMP45**



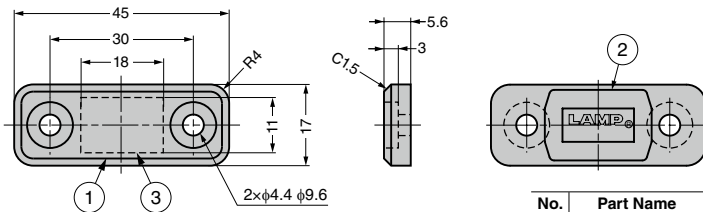
- For resin coated magnetic catch.
- The counter plate coated with resin prevents rusting, dust and spark.
- Completely sealed, ideal for high corrosion environments such as kitchen and bath equipment.

[Remarks]

- Do not use in contact with steam, hot water and water. And do not leave strongly acidic or basic detergents
- Coated with resin may decrease the magnetic force of the magnetic catch used together. Please check with actual item.

[Recommended Screws]

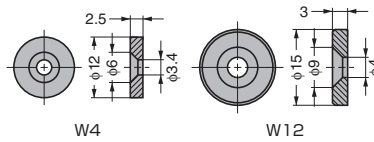
- M4 screw, tapping screw nominal 4 (truss or binding head, SUS)



No.	Part Name	Material	Finish / Colour
1	Body	PP	White, Black
2	Body (Back Side)		Blue
3	Plate	Steel (SPCC)	Clear Zinc Chromate (Trivalent)

RoHS	CAD	Item Code	Item Name	Colour	Weight (g)	Box (pcs)	Carton (pcs)
RoHS	3D	140-050-122	MC-JMP45WT	White	7.3	100	1000
RoHS	3D	140-029-241	MC-JMP45BL	Black		100	1000

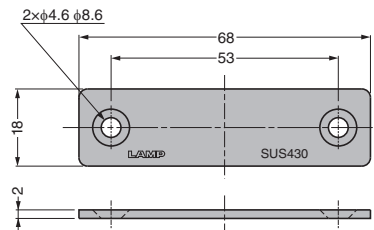
COUNTER PLATE W



W4 shown.

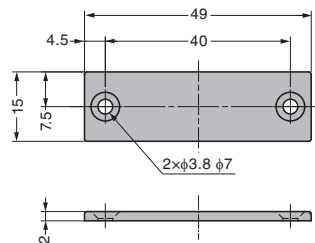
RHS	CAD	Item Code	Item Name	Material	Finish	Weight (g)	Box (pcs)	Carton (pcs)
		140-050-051	W4	Steel (SPHC)	Coloured Zinc Chromate (Trivalent)	1.7	1000	10000
		140-050-113	W12	Steel (SUM)	Nickel	3.3	600	3000

STAINLESS STEEL COUNTER PLATE AS-68



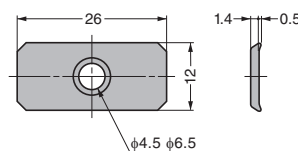
RHS	CAD	Item Code	Item Name	Material	Finish	Weight (g)	Box (pcs)	Carton (pcs)
		140-050-138	AS-68	Stainless Steel (SUS430)	Barrel Polished	17	100	1000

STAINLESS STEEL COUNTER PLATE MC-JM49



RHS	CAD	Item Code	Item Name	Material	Finish	Weight (g)	Box (pcs)	Carton (pcs)
		140-050-149	MC-JM49	Stainless Steel (304 Equivalent)	Polished	10	100	1000

COUNTER PLATE SP0207



RHS	CAD	Item Code	Item Name	Material	Finish	Weight (g)	Box (pcs)	Carton (pcs)
		140-050-323	SP0207	Steel	Clear Zinc Chromate	3.1	5000	-