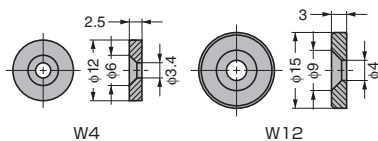


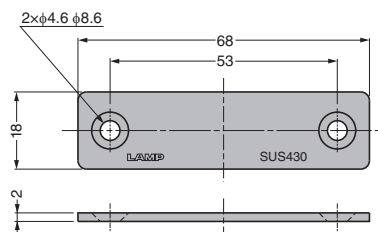
COUNTER PLATE W



W4 shown.

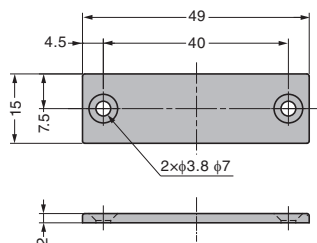
RHS	CAD	Item Code	Item Name	Material	Finish	Weight (g)	Box (pcs)	Carton (pcs)
		140-050-051	W4	Steel (SPHC)	Coloured Zinc Chromate (Trivalent)	1.7	1000	10000
		140-050-113	W12	Steel (SUM)	Nickel	3.3	600	3000

STAINLESS STEEL COUNTER PLATE AS-68



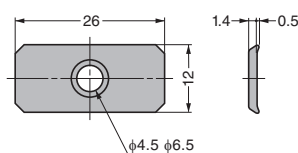
RHS	CAD	Item Code	Item Name	Material	Finish	Weight (g)	Box (pcs)	Carton (pcs)
		140-050-138	AS-68	Stainless Steel (SUS430)	Barrel Polished	17	100	1000

STAINLESS STEEL COUNTER PLATE MC-JM49



RHS	CAD	Item Code	Item Name	Material	Finish	Weight (g)	Box (pcs)	Carton (pcs)
		140-050-149	MC-JM49	Stainless Steel (304 Equivalent)	Polished	10	100	1000

COUNTER PLATE SP0207



RHS	CAD	Item Code	Item Name	Material	Finish	Weight (g)	Box (pcs)	Carton (pcs)
		140-050-323	SP0207	Steel	Clear Zinc Chromate	3.1	5000	-