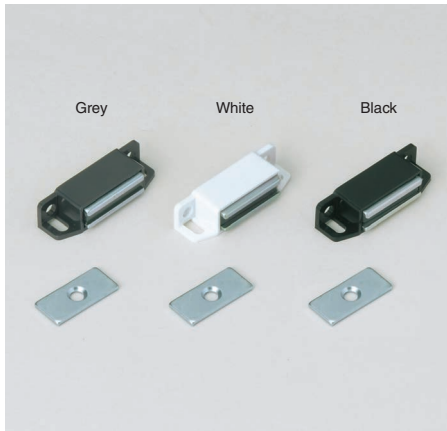


MAGNETIC CATCH MC0099



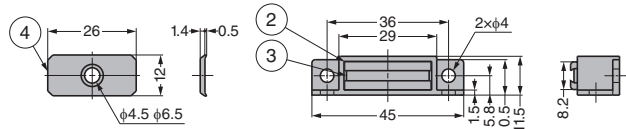
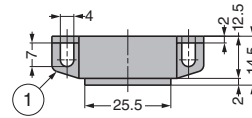
● Can be installed vertically or horizontally.

[Remarks]

- Be sure to read the "Cautions" 1.
- Only grey body with magnetic force 51N (5.2kgf).

[Parts Included]

- Counter plate SP0207 2.



| No. | Part Name | Material | Finish / Colour |
|-----|---------------|--------------|------------------------|
| ① | Body | ABS | White, Black |
| | | PC | Grey |
| ② | Yoke | Steel (SPCC) | Coloured Zinc Chromate |
| ③ | Magnet | Ferrite | - |
| ④ | Counter Plate | Steel | Clear Zinc Chromate |

| RHS | CAD | Item Code | Item Name | Colour | Magnetic Force N | Magnetic Force kgf | Weight (g) | Box (pcs) | Carton (pcs) |
|-----|-----|-------------|-----------|--------|------------------|--------------------|------------|-----------|--------------|
| | | 140-050-501 | MC0099BP | Black | 10.8 | 1.1 | 16.3 | 100 | 1000 |
| | | 140-050-502 | MC0099WP | White | | | | 100 | 1000 |
| | | 140-050-503 | MC0099SBP | Black | 37.2 | 3.8 | | 100 | 1000 |
| | | 140-050-504 | MC0099SWP | White | | | | 100 | 1000 |
| | | 140-050-505 | MC0099GP | Grey | 51 | 5.2 | | 100 | 1000 |

Refer to 1 : P.607, 2 : P.639

SEALED MAGNETIC CATCH (W/SWITCH) MC-JM74SW-30

IP



- Waterproof switch built-in magnetic catch. It functions as a catch and power switch depending on opening/closing of door or lid.
- Single-pole double-throw switch.
- Conforms to the specified electrical appliances and materials in the Electrical Appliances and Material Safety Act (PSE).
- Can be installed vertically or horizontally. Processing for passing through power cord is required for horizontal installation.
- The body coated with resin prevents dust. And the built-in switch is designed to meet IP67.
- Movable adsorption sheet of counter plate prevents malfunction of catch and switch.

[Specifications]

| | |
|---|--|
| Rated Voltage and Current | AC250V 5A (Load Resistance) AC125V 5A (Load Resistance) DC30V 5A (Load Resistance) |
| Insulation Resistance | Min. 100MΩ (DC500V) |
| Contact Resistance (Initial Value) | Max. 100MΩ |
| Min. Applicable Load | DC5V 160mA |
| Operating Temperature | -40~+80°C, Max. 60% RH (No Freezing and Condensation) |
| Lead Wire | Single Core Heat Resistant PVC Cord 0.75 mm ² (<PS> E Certification) |

[Switch Contact Type]

NC NO COM NC (Red) = Normally Close (Red)(Blue)(Black)
NO (Blue) = Normally Open
COM (Black) = Common
The power switch operates depending on opening/closing of door or lid.

[Two Types of Operation Can Be Chosen by Selecting Connection]

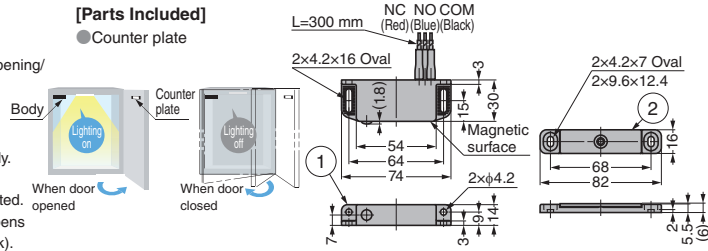
- Connecting NO (Blue) and COM (Black)
Energised when the counter plate is in contact with the body.
- Connecting NC (Red) and COM (Black)
Energised when the counter plate and the body are separated.
Example) To turn on the inspection light when the door opens in cabinet etc., connect NC (red) and COM (black).

[Remarks]

- Be sure to read the "Cautions" 1.
- Do not use as a door stopper. Otherwise, it may be damaged.
- If the product containing this product falls under other category than the specified electrical appliances and materials, please report to the regulatory agency.
- Do not use in contact with steam, hot water and water. Do not leave strongly acidic or basic detergents to avoid deteriorating.

[Parts Included]

- Counter plate



| RHS | CAD | Item Code | Item Name | Magnetic Force N | Magnetic Force kgf | Weight (g) | Box (pcs) | Carton (pcs) |
|-----|-----|-------------|--------------|------------------|--------------------|------------|-----------|--------------|
| | | 140-017-555 | MC-JM74SW-30 | 29.4 | 3 | 80 | 10 | 80 |

Refer to 1 : P.607

| No. | Part Name | Material | Finish / Colour |
|-----|---------------|------------------------------|-----------------------|
| ① | Body | POM/Neodymium | Black |
| ② | Counter Plate | POM/Stainless Steel (SUS430) | Black/Barrel Polished |