

# MAGNETIC CATCH MC-158, MC-159



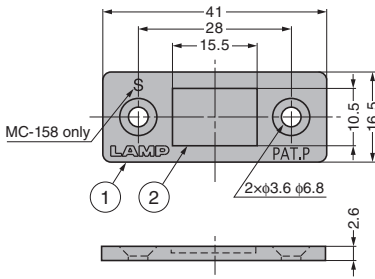
- Ultra thin magnetic catch of 2.6mm thick ideal for tight spaces.
- Small body with strong magnetic force by using neodymium magnet.
- Similar items (extra strong magnetic force): MC-159-8 **1**, MC-159-SUS **2**.
- AS parts set (below) for installing to aluminium frame also available.

### [Remarks]

- Be sure to read the "Cautions" **3**.
- Max. temperature: 80°C
- The counter plate should be in contact with the body. Direct contact with the magnet may break the magnet.
- Only MC-158 is marked with "S" to differentiate it from MC-159 (see the drawing below)

### [Recommended Screws]

- Countersunk head screw M3 or Countersunk head wood screw 3.1



No.	Part Name	Material	Finish (MC-158, MC-159)	Finish (MC-159-BL)
①	Body	Steel (SPCC)	Nickel	Copper Plating (Black)
②	Magnet	Neodymium		Black Chromate (Trivalent)

### [Counter Plate] Sold Separately

RoHS	CAD	Item Code	Item Name
		140-059-555	MC-YN001U
		140-038-025	MC-YN001U-BL

### [Magnetic Catch]

RoHS	CAD	Item Code	Item Name	Magnetic Force N	Magnetic Force kgf	Weight (g)	Box (pcs)	Carton (pcs)
		140-050-014	MC-158	14.7	1.5	12	200	1000
		140-058-061	MC-159	39	4		200	1000
		140-038-023	MC-159-BL				200	1000

Refer to **1** **2** : P.621, **3** : P.607



## Parts Set for Installing to Aluminium Frame

Please refer to the series introduction page **1** for details about AS series.

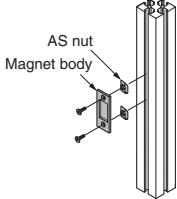
### [AS Parts Set] Parts set of counter plate, screws and AS nuts used for installing to aluminium frame



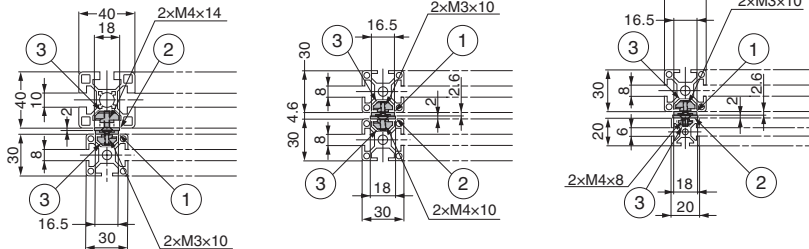
RoHS	CAD	Item Code	Item Name	Aluminium Frame	Parts	Weight (g)
	-	140-041-498	AS-MC-159-30-6	30×30 Groove Width 6 mm	Magnetic Catch MC-159 : 1 pc Counter Plate AS-68 : 1 pc AS Nut AS-6M3 : 2 pcs AS Nut AS-6M4 : 2 pcs M3×10 Hexagon Socket Countersunk Head Screw : 2 pcs M4×10 Hexagon Socket Countersunk Head Screw : 2 pcs	36
	-	140-041-499	AS-MC-159-30-8	30×30 Groove Width 8 mm	Magnetic Catch MC-159 : 1 pc Counter Plate AS-68 : 1 pc AS Nut AS-8M3 : 2 pcs	44
	-	140-041-500	AS-MC-159-40-8	40×40 Groove Width 8 mm	AS Nut AS-8M4 : 2 pcs M3×10 Hexagon Socket Countersunk Head Screw : 2 pcs M4×10 Hexagon Socket Countersunk Head Screw : 2 pcs	48

※Item names correspond to MC-159.

### [Installation]



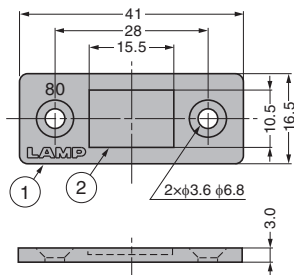
### [Dimensions]



No.	Product Name
①	Magnetic Catch MC-159
②	Counter Plate AS-68
③	AS Nut

Refer to **1** : FRONT P.20, **2** : P.639, **3** : P.706

## MAGNETIC CATCH MC-159-8 Strong Force Type



- Ultra thin magnetic catch of 3mm thick ideal for tight spaces.
- Small body with extra strong magnetic force by using neodymium magnet.
- Similar items (different magnetic force): MC-158, MC-159 **1**, MC-159-SUS **2**.

### [Remarks]

- Be sure to read the "Cautions" **3**.
- Max. temperature: 80°C
- The counter plate should be in contact with the body. Direct contact with the magnet may break the magnet.

### [Recommended Screws]

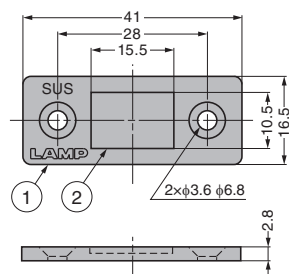
- Countersunk head screw M3 or Countersunk head wood screw 3.1

No.	Part Name	Material	Finish
①	Body	Steel	Nickel
②	Magnet	Neodymium	

RoHS	CAD	Item Code	Item Name	Magnetic Force N	Magnetic Force kgf	Weight (g)	Box (pcs)	Carton (pcs)
		140-026-510	MC-159-8	78.4	8	14	200	1000

Refer to **1** : P.620, **2** : P.621, **3** : P.607

## MAGNETIC CATCH MC-159-SUS

**SUS**


- Anti rust: made of stainless steel and acrylic resin coated magnet.
- Ultra thin magnetic catch of 2.8mm thick ideal for tight spaces.
- Small body with strong magnetic force by using neodymium magnet.
- Similar items (different magnetic force): MC-158, MC-159 **1**, MC-159-8 **2**.

### [Remarks]

- Be sure to read the "Cautions" **3**.
- Max. temperature: 80°C
- The counter plate should be in contact with the body. Direct contact with the magnet may break the magnet.

### [Recommended Screws]

- Countersunk head screw M3 or Countersunk head wood screw 3.1

No.	Part Name	Material	Finish
①	Body	Stainless Steel (SUS430)	Barrel Polished
②	Magnet	Neodymium	Nickel

RoHS	CAD	Item Code	Item Name	Magnetic Force N	Magnetic Force kgf	Weight (g)	Box (pcs)	Carton (pcs)
		140-026-511	MC-159-SUS	49	5	13	200	1000

Refer to **1** : P.620, **2** : P.621, **3** : P.607