

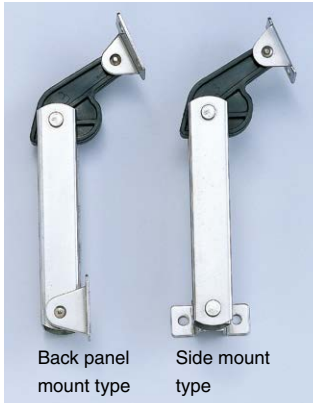
# SPRING LOADED LID STAY



## S-YT

LID SUPPORTS

SPRING LOADED LID STAY

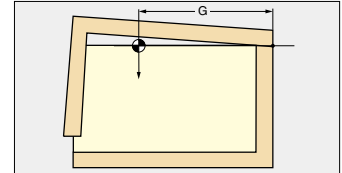
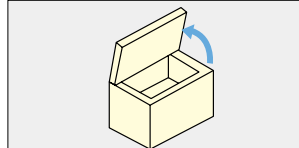


### Features

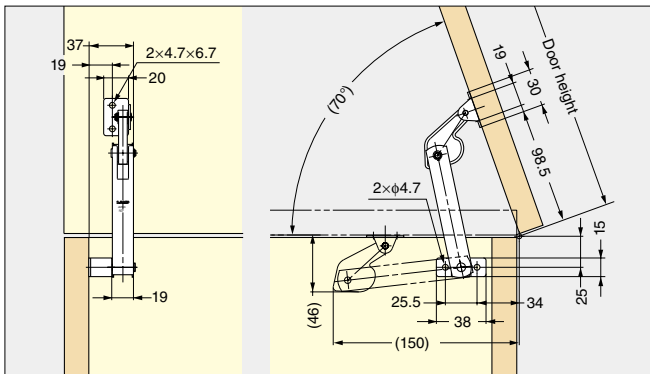
- Built-in spring mechanism makes opening lids feel light. Holds in fully open position.
- 2 different kinds of spring power available.
- Both body and spring are made out of SUS304 stainless steel for excellent corrosion resistance.
- Easy to separate resin and metal components.

### Remarks

Do not use with concealed hinges.

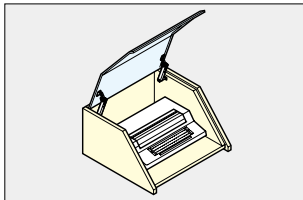


## SIDE MOUNT TYPE

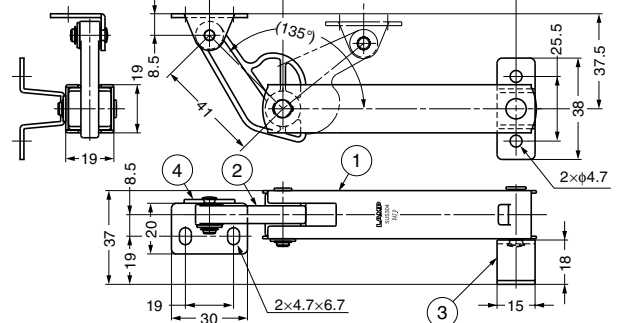


Installation for 70° opening (Max. 80°)

### Application Example



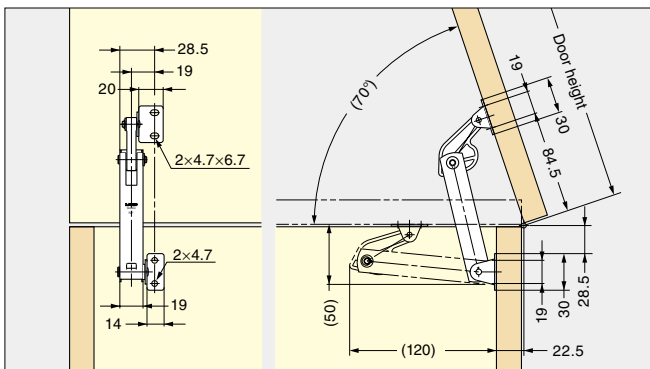
Type: Left



No.	Part Name	Material	Finish/Colour
①	Body	Stainless Steel (SUS304)	Mirror
②	Arm	Polyacetal (POM)	Black
③	Case Bracket	Stainless Steel (SUS304)	Mirror
④	Arm Bracket	Stainless Steel (SUS304)	Mirror

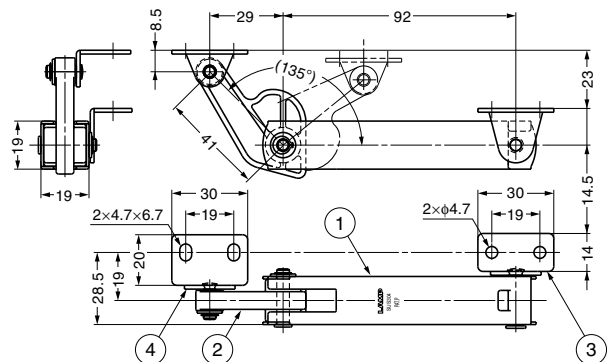
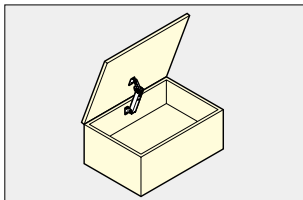
Item Code	Item Name	Type	Spring Tension	Approx. Torque Moment	Weight	Box	Carton
180-100-083	S-YT01R	Right	Soft	Max. 2.94 N-m/pc (30 kgf-cm/pc)	130 g	10 pcs	100 pcs
180-100-084	S-YT01L	Left	Soft		130 g	10 pcs	100 pcs
180-100-085	S-YT02R	Right	Hard	Max. 3.92 N-m/pc (40 kgf-cm/pc)	130 g	10 pcs	100 pcs
180-100-086	S-YT02L	Left	Hard		130 g	10 pcs	100 pcs

## BACK PANEL MOUNT TYPE



Installation for 70° opening (Max. 80°)

### Application Example



No.	Part Name	Material	Finish/Colour
①	Body	Stainless Steel (SUS304)	Mirror
②	Arm	Polyacetal (POM)	Black
③	Case Bracket	Stainless Steel (SUS304)	Mirror
④	Arm Bracket	Stainless Steel (SUS304)	Mirror

Item Code	Item Name	Spring Tension	Approx. Torque Moment	Weight	Box	Carton
180-100-081	S-YT01S	Soft	Max. 2.94 N-m/pc (30 kgf-cm/pc)	130 g	10 pcs	100 pcs
180-100-082	S-YT02S	Hard		130 g	10 pcs	100 pcs

