

ONE WAY TORQUE HINGE

Free stop
+
Easy operation

Friction in one direction only (free stop): Allows for frictionless handling of the door or lid in the opposite direction.

TORQUE HINGES

DAMPER HINGES

LIFT ASSIST HINGES

DETENT HINGES

CONCEALED HINGES

BUTT HINGES

PIANO HINGES

STEP HINGES

LIFT-OFF HINGES

PIVOT HINGES

SPRING HINGES

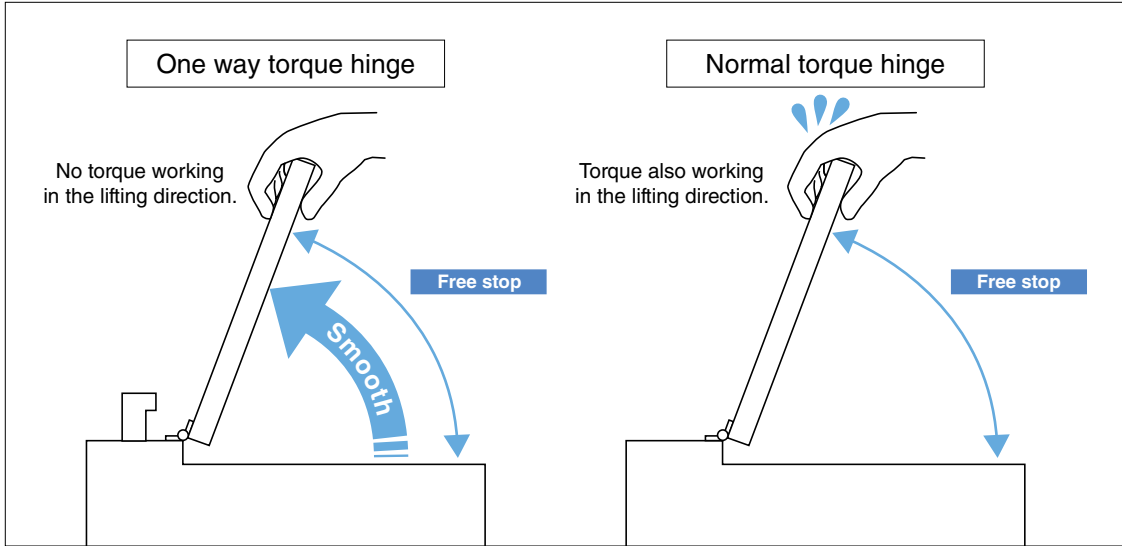
CLEAN ROOM HINGES

HINGES FOR ALUMINIUM FRAME

DROP HINGES

GLASS DOOR HINGES

SPECIAL HINGES



[List of One Way Torque Hinges]

Item Name		
	HG-TQJ100	HG-TQA
Torque N · m	0~10 (Adjustable)	9.0 ^{+40%} / _{-20%}
Page	P.19	P.20

[Other One Way Torque Products]

FREE STOP STAY (ONE WAY) S-TAR P.288



- Torque stay for upward-opening, downward-opening and top-opening.
- Friction in one direction only, realising smooth opening.
- Torque adjustable with a hex key (included).
- Torque: 0 ~ 7N · m (adjustable)

ADJUSTABLE ONE WAY TORQUE HINGE HG-TQJ100



- Friction in one direction only: Allows for frictionless handling of the door in the opposite direction.
- Torque adjustable from 0 to 10N · m.
- High torque type with max. torque up to 10N · m.
- Two types (friction in opening direction and in closing direction) available.
- Torque is stable.
- Cover attached to torque adjustment part for clean appearance.

[Specifications]

- Operating temperature: 0°C ~40°C

[Applications]

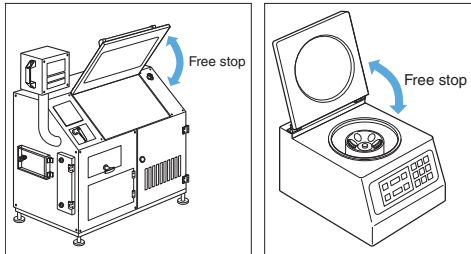
- Impact-free opening and closing of door. Medical equipment, FA equipment, and OA equipment, etc.

[Remarks]

- Be sure to read the "Cautions" 1.
- Use all mounting holes.
- When installing, ensure that both hinge shafts are levelled and aligned.
- Do not remove the torque adjustment screw.
- Use a hex key (nominal size 5) for torque adjustment.
- Readjust the torque moment when it lowers.
- Be sure to fix the slit on the opposite shaft when turning the torque adjustment nut.

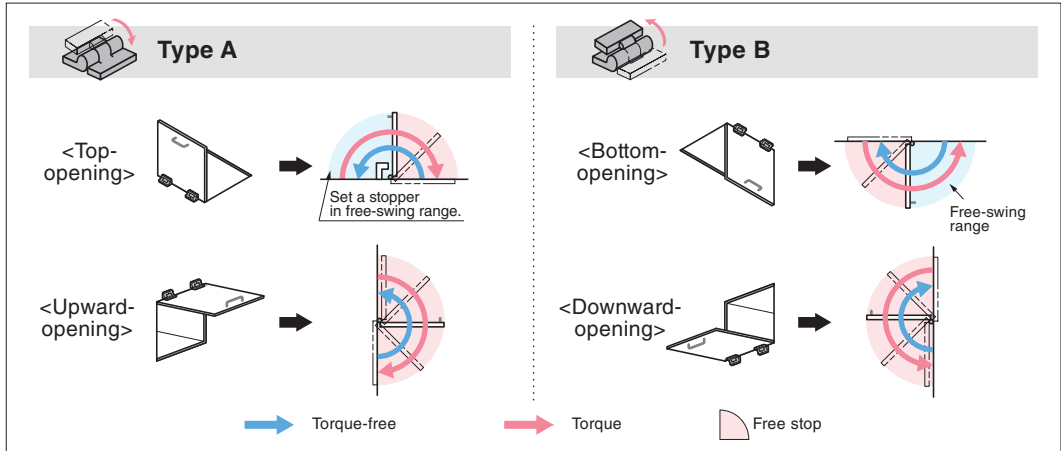
Selection Tool
Sasuga-kun
 Applicable Products
 Used for Product Selection & Simulation.
 Available on Web!

[Application Example]

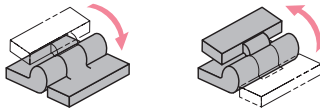


Since torque is adjustable from 0 to 10N · m, applicable to various doors.

[Torque Direction and Free-stop Range]



[Torque Working Direction]



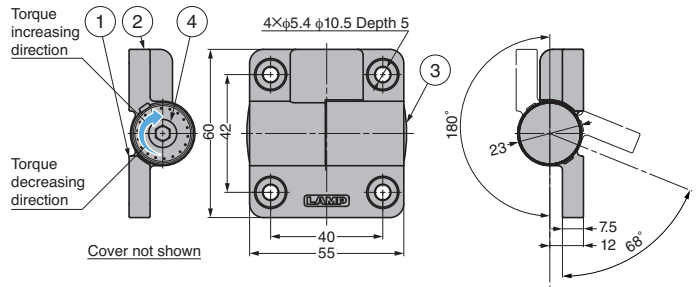
Opening direction

Closing direction

Item name suffixed with "A"

Item name suffixed with "B"

No.	Part Name	Material	Finish / Colour
①	Bracket A	Zinc Alloy	Silver (baking paint)
②	Bracket B		
③	Cover	PP	Dark Grey
④	Torque Adjustment Nut	Steel	—



RoHS	CAD	Item Code	Item Name	Torque Working Direction	Torque N · m/pc	Torque kgf · cm/pc	Weight (g)	Box (pcs)	Carton (pcs)
RoHS	3D	170-032-969	HG-TQJ100-A	Hinge Opening Direction	0-10	0-102	242	12	96
RoHS	3D	170-032-970	HG-TQJ100-B	Hinge Closing Direction				12	96

Refer to 1 : P.15.