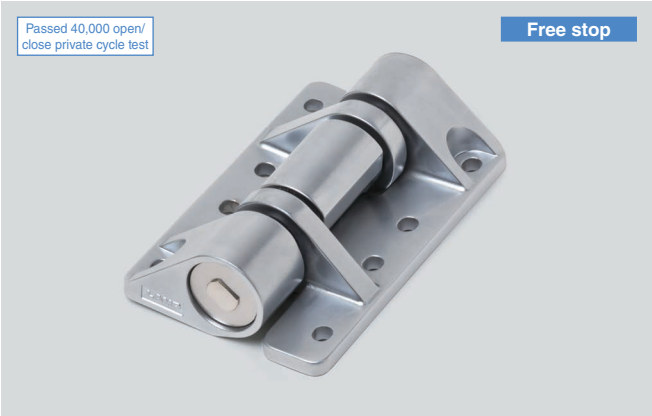


TWO STEPS ONE WAY TORQUE HINGE



HG-TQW8080



Features

- Generates torque in downward direction only. (Operation range: 0 - 180°)
- The torque direction reverses when the hinge opens at over 90°. This allows a flap to hold in position at all angles of 180° with smooth and light operation.

Specifications

Operating temperature: 0°C - 40°C

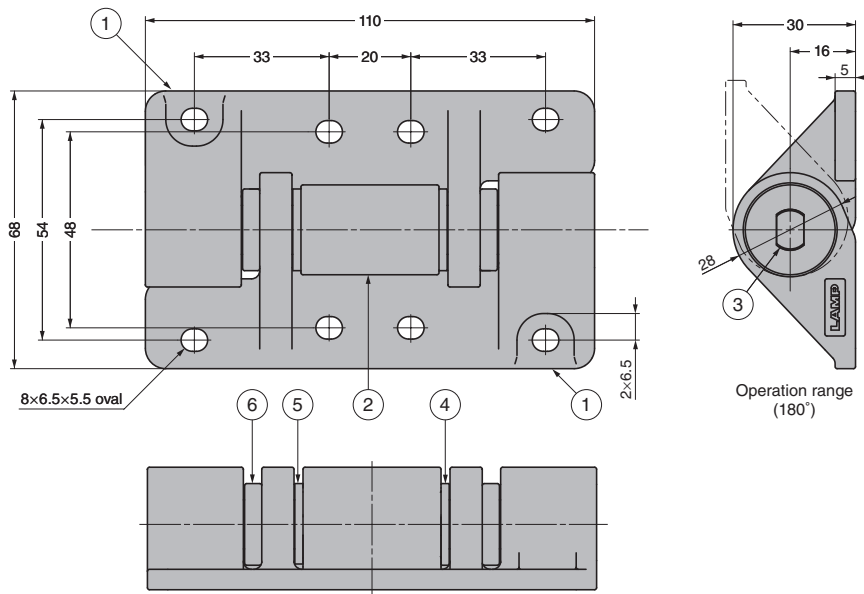
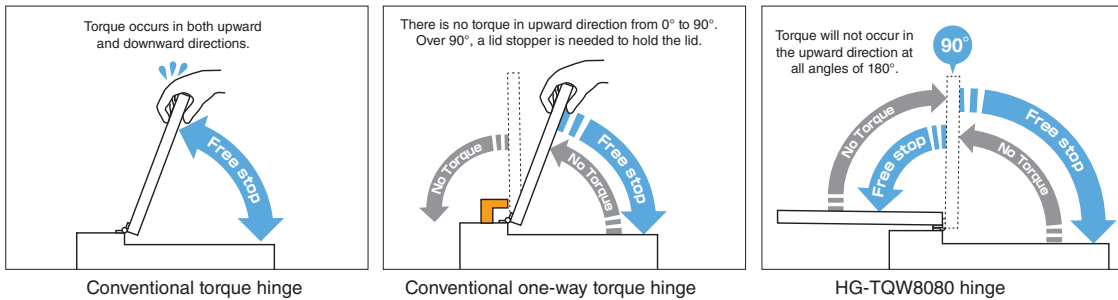
Application

Doors that should not be subjected to impact when opening and closing.
Medical equipment, FA equipment, OA equipment, etc.

Remarks

- Use all installation holes.
- Keep the centre of the hinge shafts level to prevent misalignment during installation.

[Video Link](#)



No.	Part Name	Material	Finish/Colour
①	Base	Zinc Alloy	Satin
②	Bracket		Chrome
③	Shaft	Stainless Steel (SUS)	—
④	Plug	Polyacetal (POM)	Black
⑤	Washer A		
⑥	Washer B		

Selection Tool
Sasuga-kun
 Applicable Products
 Used for Product
 Selection &
 Simulation.
 Available on Web!

CAD	Item Code	Item Name	Torque (N·m)	Torque (kgf·cm)	Weight (g)	Box (pcs)	Carton (pcs)
2D/3D	170-041-284	HG-TQW8080	8.0±20%	81.6±20%	625	8	16