

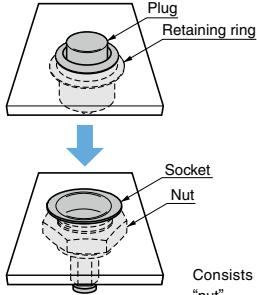
PUSH LOCK FASTENER 251F, 151F Large/Flush Type



- Insert plug into socket and push to lock/unlock.
- Resin and metal types available.
- Flush locked design prevents snagging.
- Fast and easy installation/removal of panel.
- Locked cam prevents release by vibration.

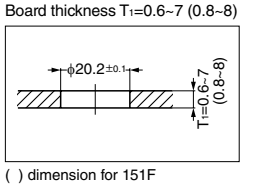
[Remarks]

- Load applied directly to the body may cause damage.

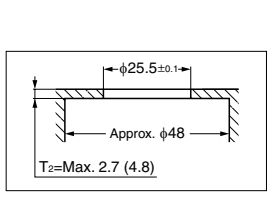
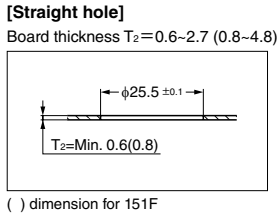
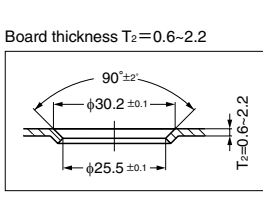
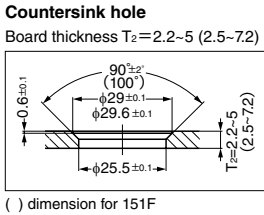


Consists of four parts: "plug", "ring", "socket" and "nut".

[Preparation (Plug)]



[Preparation (Socket)]

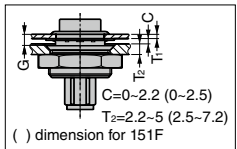


[Grip Dimensions]

Please set so that the grip dimension G is within 1.2-6.

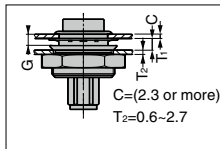
Countersink hole

In case of clearance $C=0\sim 2.2$ (0-2.5), grip dimension $G=T_1+C+0.7$



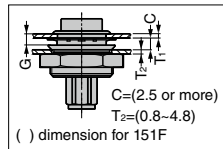
Straight hole 1

In case of clearance $C=2.3$ or more, grip dimension $G=T_1+C-1.4$



Straight hole 2

In case of clearance $C=2.5$ or more, grip dimension $G=T_1+C-1.7$



How to select

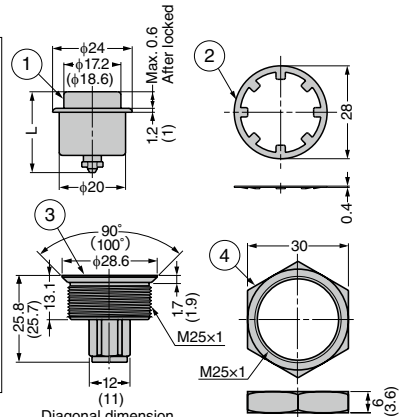
In case of $T_1=1$, $C=0.7$ and $T_2=3$, grip dimension $G=1+0.7+0.7=2.4$
Set item name...251F-02-3

How to select

In case of $T_1=1$, $C=2.5$ and $T_2=1$, grip dimension $G=1+2.5-1.4=2.1$
Set item name...251F-02-3

How to select

In case of $T_1=1$, $C=2.5$ and $T_2=1$, grip dimension $G=1+2.5-1.7=1.8$
Set item name...151F-01-2



Diagonal dimension (Width across flats 11)

() dimension for 151F

[251F] Resin type

RHS	CAD	Item Code	Set Item Name	Grip Dimension G	Plug Dimension L	Retaining Force N	Retaining Force kgf	Weight (g)	Box (pcs)	Carton (pcs)
-	3D	120-040-259	251F-01-3	1.2-2	20.5	245	25	15	1	1
-	3D	120-040-260	251F-02-3	2-2.8	21				1	1
G	3D	120-040-261	251F-03-3	2.8-3.6	22				1	1
G	3D	120-040-262	251F-04-3	3.6-4.4	23				1	1
-	3D	120-040-263	251F-05-3	4.4-5.2	23.5				1	1
-	3D	120-040-264	251F-06-3	5.2-6	24.5				1	1

No.	Part Name	Material	Finish / Colour
①	Plug	POM	Black
②	Retaining Ring	Steel	Phosphate Coating
③	Socket	POM	Black
④	Nut		

[151F] Metal type

RHS	CAD	Item Code	Set Item Name	Grip Dimension G	Plug Dimension L	Retaining Force N	Retaining Force kgf	Weight (g)	Box (pcs)	Carton (pcs)
-	3D	120-013-718	151F-01-2	1.2-2	20.5	245	25	51	-	1
-	3D	120-013-719	151F-02-2	2-2.8	21				-	1
-	3D	120-013-720	151F-03-2	2.8-3.6	22				-	1
-	3D	120-013-721	151F-04-2	3.6-4.4	23				-	1
-	3D	120-013-722	151F-05-2	4.4-5.2	23.5				-	1
-	3D	120-013-723	151F-06-2	5.2-6	24.5				-	1

No.	Part Name	Material	Finish
①	Plug	Brass	Chrome
②	Retaining Ring	Steel	Phosphate Coating
③	Socket	Brass	Nickel
④	Nut	Zinc Alloy (ZDC)	