

STAINLESS STEEL PUSH LOCK FASTENER 152FT Mini/Flush Type



- Insert plug into socket and push to lock/unlock.
- Flush locked design prevents accidental release. Push with sharp-pointed object to release.
- Fast and easy installation/removal of panel.
- Locked cam prevents release by vibration.
- Stainless steel construction suitable for corrosive environments.

[Remarks]

- Load applied directly to the body may cause damage.

MAGNETIC CATCHES

KNUCKLE CATCHES & TENSION CATCHES

TOUCH LATCHES

LEVER LATCHES

SLIDE / BARREL BOLTS

DRAW LATCHES

PUSH LOCK FASTENERS & KNOB FASTENERS

ALUMINUM FRAME CORNER CONNECTORS

DOOR DAMPERS

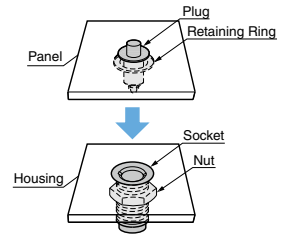
[When plug is pushed]



[Installation Image]



Flush to prevent release afterward

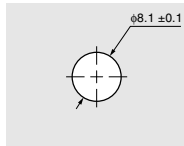


Consists of four parts: "plug", "ring", "socket" and "nut".

[Panel Side Mounting Hole Dimensions]

● **Hole**

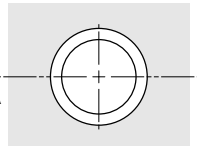
Door thickness $T_1 = 0.8$ to 4.8



[Housing Side Mounting Hole Dimensions]

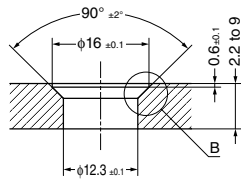
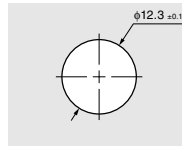
● **Countersink hole**

Door thickness $T_2 = 2.2$ to 9

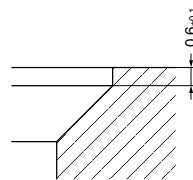


● **No countersink hole**

Door thickness $T_2 = 0.8$ to 7.5



A-A Cross-Section

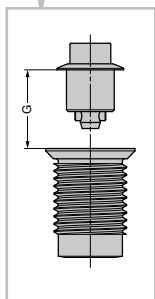


Detailed Figure B

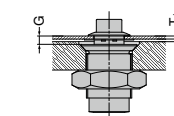
[Grip Dimensions]

Grip dimension G

The distance from the plug flange bottom surface to the socket top surface is the grip dimension G. Set so that the grip dimension G is 1.2 to 6.

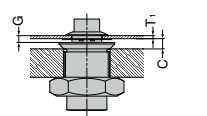


● **For countersink hole**

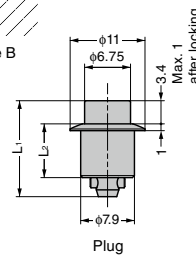


G = panel thickness T_1 + clearance C + 0.7

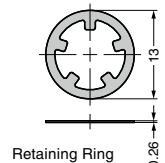
● **For non-countersink hole**



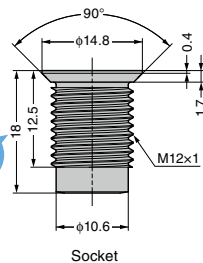
G = panel thickness T_1 + clearance C - 1.7
Clearance C = 2.4 or higher



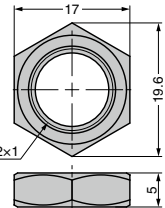
Plug



Retaining Ring



Socket



Nut

Short!

RoHS	CAD	Item Code	Item Name	Material	Grip Dimension G	Plug Dimension L_1	Plug Dimension L_2	Retaining Force N	Retaining Force kgf	Weight (g)
		120-050-628	152FT-12-SS	Stainless Steel	1.2~2	14.1	7.9	147	15	18
		120-050-629	152FT-20-SS		2~2.8	14.9				
		120-050-630	152FT-28-SS		2.8~3.6	15.7				
		120-050-631	152FT-36-SS		3.6~4.4	16.5	10.3			
		120-050-632	152FT-44-SS		4.4~5.2	17.3				
		120-050-633	152FT-52-SS		5.2~6	18.1				