

Material

High impact resistant thermoplastic

Standard colour

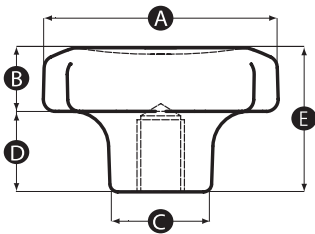
Black

Finish

Matt

Thread material

Brass or stainless steel



Part No.	A	B	C	D	E	Thread size	Thread material
16463R	30	10	13	11	21	M5	Brass
16464Y	30	10	13	11	21	M5	Stainless Steel
16465U	30	10	13	11	21	M6	Brass
16466Q	30	10	13	11	21	M6	Stainless Steel
16467X	30	10	13	11	21	M8	Brass
16468T	30	10	13	11	21	M8	Stainless Steel
16499Q	40	12	16.5	14	26	M5	Brass
16500X	40	12	16.5	14	26	M5	Stainless Steel
16501T	40	12	16.5	14	26	M6	Brass
16502P	40	12	16.5	14	26	M6	Stainless Steel
16503W	40	12	16.5	14	26	M8	Brass
16504S	40	12	16.5	14	26	M8	Stainless Steel
16505Z	40	12	16.5	14	26	M10	Brass
16506V	40	12	16.5	14	26	M10	Stainless Steel
16539V	50	14	20	17	31	M6	Brass
16540R	50	14	20	17	31	M6	Stainless Steel
16541Y	50	14	20	17	31	M8	Brass

Continued on facing page »

« Continued from facing page

Part No.	A	B	C	D	E	Thread size	Thread material
16542U	50	14	20	17	31	M8	Stainless Steel
16543Q	50	14	20	17	31	M10	Brass
16544X	50	14	20	17	31	M10	Stainless Steel
16545T	50	14	20	17	31	M12	Brass
16546P	50	14	20	17	31	M12	Stainless Steel
16575U	60	16	24.5	20	36	M10	Brass
16576Q	60	16	24.5	20	36	M10	Stainless Steel
16577X	60	16	24.5	20	36	M12	Brass
16578T	60	16	24.5	20	36	M12	Stainless Steel
16597U	80	18	33	23	41	M12	Brass
16598Q	80	18	33	23	41	M12	Stainless Steel
16599X	80	18	33	23	41	M16	Brass
16600T	80	18	33	23	41	M16	Stainless Steel